

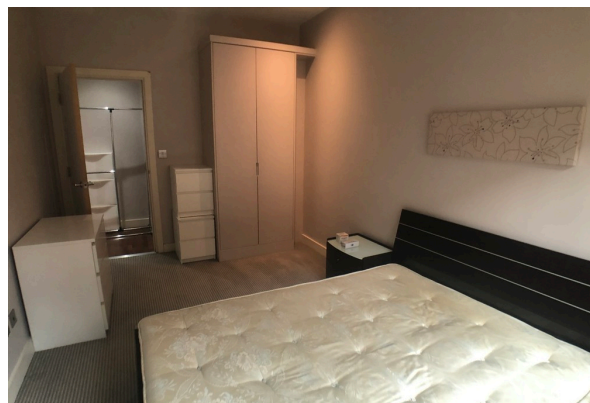


**£925 PCM**

- SPACIOUS ONE BED
- CITY CENTRE
- FULLY FURNISHED
- WASHING MACHINE
- MODERN
- INTEGRATED APPLIANCES
- GREAT LOCATION
- PARK ROW

**12-14 Greek Street, Leeds, West  
Yorkshire, LS1 5RW**

**\*\* AVAILABLE 28TH OCTOBER \*\* SPACIOUS 1  
BED \*\* PARK ROW \*\* CITY CENTRE LOCATION  
\*\* FURNISHED \*\***



## ZENKO

Properties would like to present this one bedroom apartment that is located in the heart of the business district. Situated on Park Row and Greek Street, the apartment is exceptionally spacious at 550 sq ft and is close to the station, restaurants and bars, whilst providing peaceful living.

As one of 3 distinctive conversions on Park Row, this is a rare opportunity to live in one of the most sought after locations in Leeds City Centre. This property has been furnished to a good standard. The bedroom is a large size and have plenty of floor space around the bed. The property is equipped with one bathroom. The living room and kitchen is OPEN-PLAN, spacious with sofas and great views. The kitchen is equipped with a FRIDGE/FREEZER, ELECTRIC HOB and OVEN.

AVAILABLE 28TH OCTOBER

COUNCIL TAX BAND - C

EPC RATING - C

2 The Chandlers, Leeds, West  
Yorkshire, LS2 7EZ

[www.zenkoproperties.co.uk](http://www.zenkoproperties.co.uk)  
0113 247 0777  
[sales@zenkoproperties.co.uk](mailto:sales@zenkoproperties.co.uk)

Agents Note: Whilst every care has been taken to prepare these sales particulars, they are for guidance purposes only. All measurements are approximate are for general guidance purposes only and whilst every care has been taken to ensure their accuracy, they should not be relied upon and potential buyers are advised to recheck the measurements