

moores
estateagents.com



Harebell Close, Queniborough

Leicester, LE7 3GE

Five Bedrooms, Detached House

Offers Over £585,000 | For Sale



Harebell Close, Queniborough

Leicester, LE7 3GE

Five Bedrooms, Detached House

Offers Over £585,000 | For Sale

Features

Substantial Detached Home

Three Storey

Five Bedrooms

Three Bathrooms

Vaulted Dining Area

Private Rear Garden

Off Road Parking

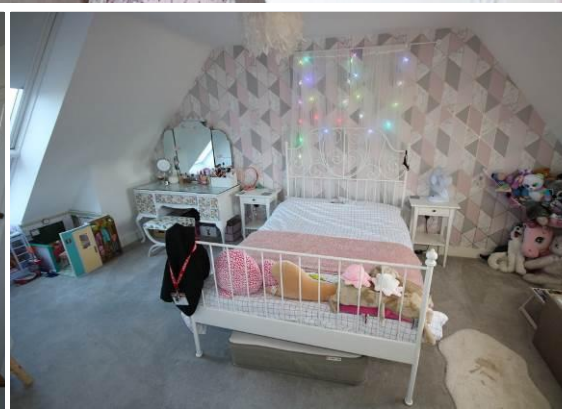
Double Garaging

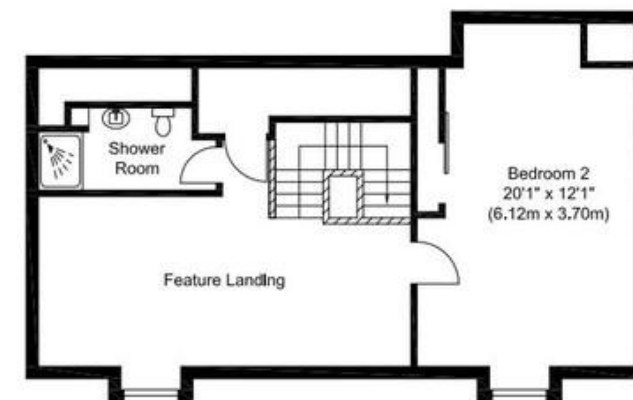
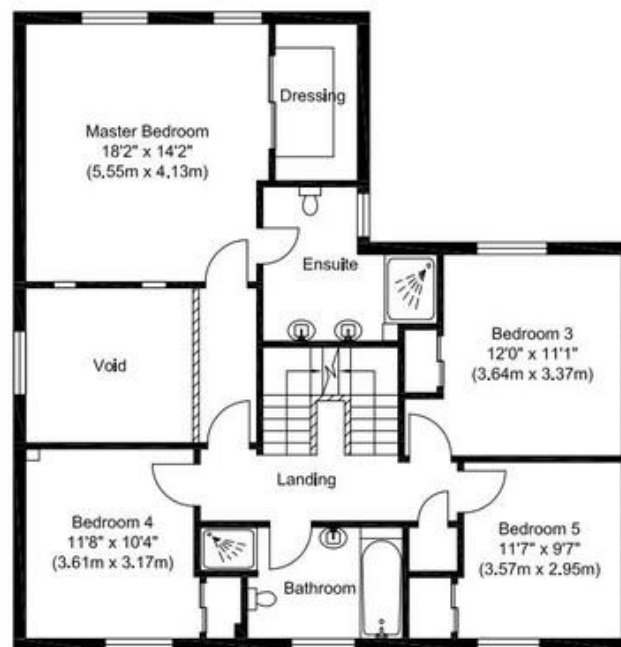
Village Location

Substantial three storey home situated in an end of cul-de-sac location with attractive open views. This home is one of the premier properties built by the renowned Davidson Homes and is conveniently set on the edge of this well sought after village of Queniborough. The village offers a range of amenities and ease of access into Leicester and the A46 giving access to the A1 being a real pin in the map location. You can really make the most of both the opportunity to enjoy country life and having all the benefits sitting on your doorstep.

The accommodation offers an excellent standard of decoration throughout making the most of some of the 'wow' architectural features. The ground floor comprises of a large entrance hall with storage cupboard, study, downstairs cloakroom, sitting room with French doors leading out to the rear garden, spacious kitchen/breakfast room with bi-fold doors leading out to the rear garden and a vaulted dining area. At first floor level, the landing leads to the master suite with dressing area and en-suite shower room, three further double bedrooms and four piece suite family bathroom. To the second floor is a spacious bedroom with a large dressing/sitting area, really making the most of the space and a en-suite shower room.

Externally, there is a private walled garden with patio area and a raised decking area to the back; great for entertainment, large gated driveway providing off road parking for a number of vehicles and a double garage.





Re-locating buyers with
Douglas & Gordon 
 having 14 offices across London

Moore V Ltd trading as Moores Estate Agents gives notice that: 1. These particulars do not constitute an offer or contract or part thereof. 2. All descriptions, photographs and plans are for guidance only and should not be relied upon as statements or representations of fact. All measurements are approximate and not necessarily to scale. Any prospective purchaser must satisfy themselves of the correctness of the information within the particulars by inspection or otherwise. 3. Moore V Ltd trading as Moores Estate Agents does not have any authority to give any representations or warranties whatsoever in relation to this property (including but not limited to planning/building regulations), nor can it enter into any contract on behalf of the Vendor. 4. Moore V Ltd trading as Moores Estate Agents does not accept responsibility for any expenses incurred by prospective purchasers in inspecting properties which have been sold, let or withdrawn. 5. If there is anything of particular importance to you, please contact this office and we will try to have the information checked for you.

25 Burton Street,
 Melton Mowbray
 01664 491610

36 High Street,
 Oakham
 01572 757979

2 Orange Street,
 Uppingham
 01572 821935

1 Sheep Market,
 Stamford
 01780 484555

London Platform,
 Peterborough Station
 01733 788888

London Platform,
 Grantham Station
 01476 855618

Follow us on...  Facebook  Twitter

Score	Energy rating	Current	Potential
92+	A		92+ A
81-91	B	87 B	
69-80	C		
55-68	D		
39-54	E		
21-38	F		
1-20	G		

www.mooresestateagents.com | office@mooresestateagents.com

 OnTheMarket.com

 rightmove