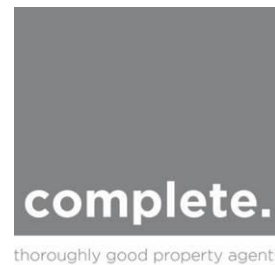




A spacious second floor apartment, with two double bedrooms, conveniently located
In Teignmouth

12 Charlton Court | Bank Street | Teignmouth | TQ14 8FN





PROPERTY TYPE

Apartment - Leasehold flat with 999 year lease from 25 December 2004



SIZE

1,077 sq ft



LOCATION

Seaside Town



AGE

1980's - 1990's



BEDROOMS

2



RECEPTION ROOMS

1



BATHROOMS

1



WARMTH

Electric Underfloor Heating



PARKING

No Allocated Parking



OUTSIDE SPACE

None



EPC RATING

65 (D)



COUNCIL TAX BAND

C



in a nutshell...

- Spacious apartment
- Intercom access system
- Two double bedrooms
- Good sized living/dining room
- Juliette balcony
- Bathroom with bath and separate shower
- Electric underfloor heating
- Short walk from local amenities
- Close to Teignmouth beach



the details...

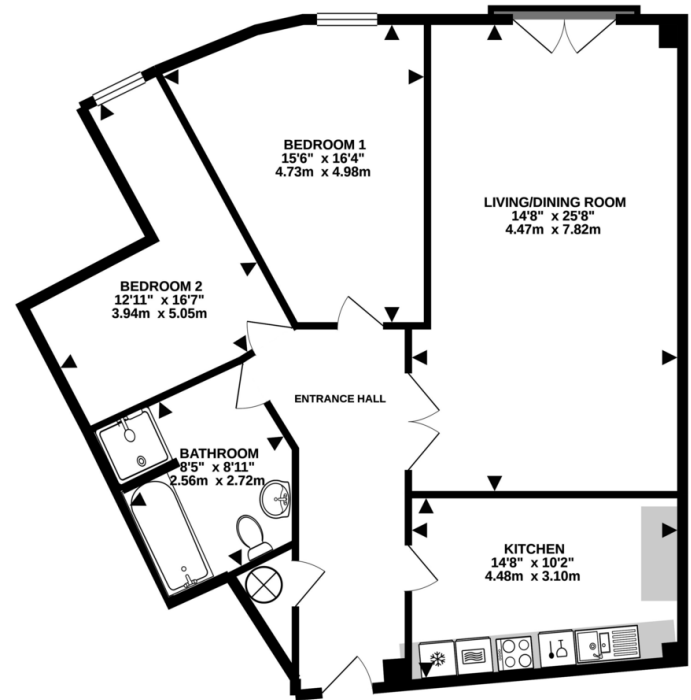
A very spacious second floor apartment, with two double bedrooms, conveniently located amid the shops, and a short walk from the beaches and amenities in the popular seaside town of Teignmouth.

An intercom access system provides secure entry into the ground floor lobby which is clean and well-maintained, where stairs and a lift leads to the upper floors and the entrance of the apartment on the second floor. Inside, it is very spacious with plenty of natural light and has light and neutral decor throughout. It feels warm and welcoming with electric underfloor heating and double glazing.

The apartment comprises of a massive living/dining room with double doors that open to reveal a Juliette balcony, a generously sized, modern kitchen with oak fitted units, tiled splashbacks and plenty of worktop space. It has a built-in fan-oven and microwave, a ceramic hob with a filter hood above, and an integrated fridge/freezer and dishwasher with space and plumbing beneath the stainless-steel sink for a washing machine.

There are two large double bedrooms one L-shaped with a papered feature wall and a dressing area, and a family bathroom has a tiled floor, and contains a white suite comprising of a bath, a separate shower, a basin, a WC and a chrome heated towel rail. The hallway has an airing cupboard with an unvented hot water cylinder providing mains pressure hot water and slatted shelving for linen.

2ND FLOOR
1077 sq.ft. (100.0 sq.m.) approx.



TOTAL FLOOR AREA: 1077 sq ft. (100.0 sq.m.) approx.
Whilst every attempt has been made to ensure the accuracy of the floorplan contained herein, measurements of doors, windows, rooms and any other items are approximate and no responsibility is taken for any error, omission or mis-statement. This plan is for illustrative purposes only and should be used as such by any



the location...

Teignmouth has a great deal to offer, not least its superb sandy beach, award winning children's play area and the nearby golf courses. Water sport activities are well catered with two sailing clubs, deep water moorings and a diving school. This picturesque town has a Victorian Pier, a new theatre, a wide selection of bars and restaurants, and well-known shops and supermarkets including Lidl and Morrisons. It also benefits from easy access to the A380, the mainline railway station at Teignmouth and the International Airport at Exeter.

Shopping

Late night pint of milk: Co-op 0.1 mile
Teignmouth town centre: Approx. 367 ft
Supermarket: Lidl 0.2 miles

Relaxing

Beach: Teignmouth 0.2 miles
Eastdiff Park: 0.5 miles
Teignmouth Golf Course: 2.6 miles

Travel

Bus stop: Orchard Gardens, approx. 384 ft
Train station: Teignmouth 0.3 miles
Main travel link: A380 4 miles
Airport: Exeter 18.6 miles

Schools

Hazeldown Primary School: 1.3 miles
Teignmouth Community School: 0.4 miles
Trinity School: 1.1 miles

Please check Google maps for exact distances and travel times.

Property postcode: **TQ14 8FN**

Need a more complete picture? Get in touch with your local branch...

Tel **01626 870 870**
Email **teignmouth@completeproperty.co.uk**
Web **completeproperty.co.uk**

Complete
13 Wellington Street
Teignmouth
Devon
TQ14 8HW

Are you selling a property too? Call us to get a set of property details like these...



Our note. For clarification we have prepared these sales particulars as a general guide and have not carried out a detailed survey nor tested these services, appliances or fittings. Room sizes should not be relied upon for carpets or furnishings. If there are any important matters which are likely to affect your decision to buy, please contact us before viewing this property. These particulars, whilst believed to be accurate, are set out as a general outline only for guidance and do not constitute any part of an offer or contract. Intending purchasers should not rely on them as statements of representation of fact, but must satisfy themselves by inspection or otherwise as to their accuracy. No person in the employment of Complete Property Services has the authority to make or give any representation or warranty in respect of the property.

SKETCH PLAN FOR ILLUSTRATIVE PURPOSES ONLY. All measurements and sizes and locations of walls, doors, window fittings and appliances are shown conventionally and are approximate only and cannot be regarded as being a representation either by the Seller or his Agent. We hope that these plans will assist you by providing you with a general impression of the layout of the accommodation. The plans are not to scale nor accurate in detail. © Unauthorised reproduction prohibited.

As part of this service we offer we may recommend ancillary services to you which we believe will help with your property transaction. We wish to make you aware that should you decide to proceed we will receive a referral fee. This could be a fee, commission, payment or other reward. We will not refer your details unless you have provided consent for us to do so. You are not under

any obligation to provide us with your consent or to use any of these services, but where you do you should be aware of the following referral fee information. You are also free to choose an alternative provider. To find out more about this, please speak to a member of the team.



selling

letting

land &
new homes

signature
homes

complete.