



Studio Apartment Offers In Excess Of **£95,000**

28 Carman Close, Stratone Village, Swindon, SN3 4XU

mcfarlane
property.com

Studio Apartment

Swindon, Swindon East

-
- EXCELLENT CASH INVESTMENT
 - REFURBISHED THROUGHOUT
 - REFITTED KITCHEN
 - REFITTED BATHROOM
-

- EXCELLENT CASH INVESTMENT -
REDECORATED THROUGHOUT -
LOUNGE/BEDROOM - FITTED KITCHEN -
REFITTED BATHROOM - ALLOCATED PARKING -
CASH BUYERS

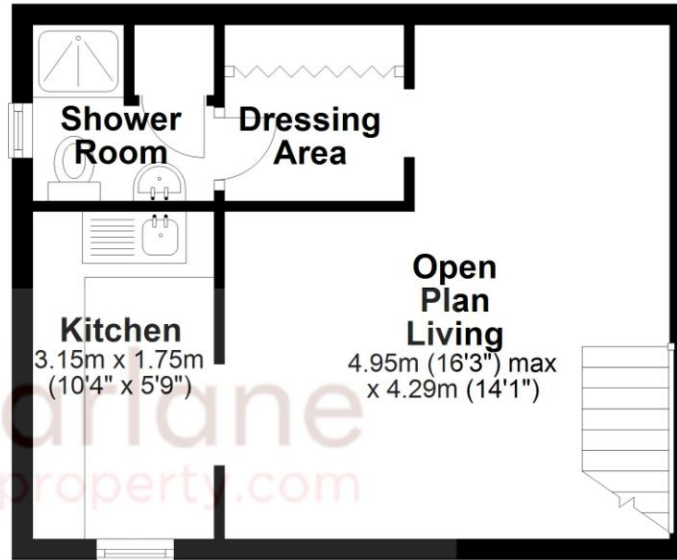
Attention all Cash Buyers. An excellent investment opportunity to acquire a studio apartment which is well located in the sought after area of Stratone Village in East Swindon. The accommodation has been refurbished and includes: Private Entrance, Lounge/Bedroom, Refitted Kitchen and Modern Bathroom. Outside there is Allocated Parking. No Onward Chain.





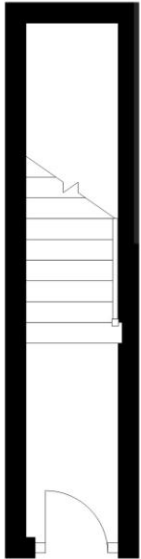
First Floor

Approx. 30.4 sq. metres (327.0 sq. feet)



Ground Floor

Approx. 4.4 sq. metres (47.3 sq. feet)



Total area: approx. 34.8 sq. metres (374.4 sq. feet)

We 
where you
LIVE


Our team are friendly, experienced and all from here. They know it better than they do their own living rooms and can help you find what you're looking for because **we love where we live.**

We would be delighted to show you around this property.

**Because every home
needs a personal touch.**

Dominic Mullen
Sales Manager, Swindon



 01793 296600

 dominic@mcfarlaneproperty.com

mcfarlaneproperty.com

mcfarlane
property.com

Swindon.
The Village Centre
Redhouse SN25 2FW
 01793 296600

Old Town.
28-30 Wood Street
Swindon SN1 4AB
 01793 611841

Cricklade.
102 High Street
Cricklade SN6 6AA
 01793 751044

Marlborough.
106 High Street
Marlborough SN8 1LT
 01672 514380

Agents Note: Whilst every care has been taken to prepare these sales particulars, they are for guidance purposes only. All measurements are approximate are for general guidance purposes only and whilst every care has been taken to ensure their accuracy, they should not be relied upon and potential buyers are advised to recheck the measurements