



**CODA**  
- ESTATES -

OFFERS OVER

**£160,000**

## 111C CUMBERNAULD ROAD, STEPPS G33 6EP

This is a truly stunning apartment and early viewing is imperative. The current owners have maintained and presented the property to an impeccable standard throughout. Located on the first floor of the attractive development, the property boasts a stylish kitchen, master bedroom ensuite and private secure parking space. EER - B

- \*\*\* Exquisite 2 Bedroom Apartment \*\*\*
- Located on the First Floor
- Master Bedroom with ensuite and Juliet Balcony
- Spacious Lounge with Bay Window





## FULL DESCRIPTION

Queens Court is an exclusive development of luxury flats located off the main road in Steps. This first floor apartment boasts spacious accommodation throughout comprising welcoming reception hallway, bright lounge with bay window formation, large contemporary dining kitchen with ample base and wall mounted units and a number of integrated appliances, 2 double bedrooms, both with build in wardrobe storage and the master benefits from an ensuite shower room and Juliet balcony to the rear. Completing the apartment is the stylish bathroom with white 3 piece bathroom suite. The current owners have created a truly stunning apartment with incredible style and impeccable taste throughout.

The property is entered via a secure door entry system and the communal areas have been well maintained by the nominated factor. The property also boasts DG, GCH, adequate storage including a large store cupboard, private/secure parking and pristine communal garden grounds.



## Room Dimensions

Reception Hallway - 5.40m x 2.05m

Formal Lounge - 4.55m x 4.25m

Dining Kitchen - 4.70m x 2.85m

Master Bedroom - 5.70m x 2.85m

Ensuite - 1.95m x 2.45m

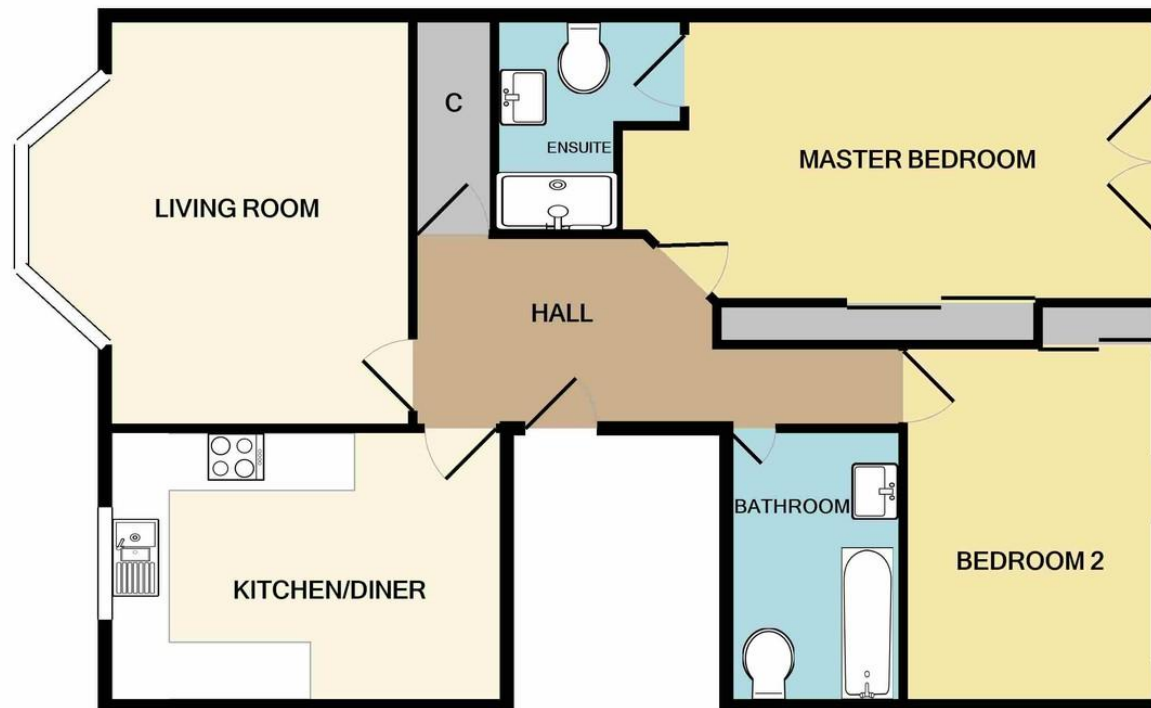
Bedroom 2 - 3.95m x 2.75m

Bathroom - 2.70m x 1.50m

Cupboard - 1.95m x 1.00m







TOTAL APPROX. FLOOR AREA 814 SQ.FT. (75.7 SQ.M.)

Whilst every attempt has been made to ensure the accuracy of the floor plan contained here, measurements of doors, windows, rooms and any other items are approximate and no responsibility is taken for any error, omission, or mis-statement. This plan is for illustrative purposes only and should be used as such by any prospective purchaser. The services, systems and appliances shown have not been tested and no guarantee as to their operability or efficiency can be given  
Made with Metropix ©2021