

MADISON BROOK
INTERNATIONAL



🏠
DUNEDIN HOUSE , NORTH WOOLWICH, E16 2LB



DUNEDIN HOUSE, NORTH WOOLWICH, E16

£265,000



PROPERTY SUMMARY

This two bedroom apartment is located on the 13th floor of a purpose built development and boasts views out to the River Thames and has access to free parking on a first come first serve basis.

Situated over 638 Sq. Ft internally the property offers a modern kitchen with fixture and fittings, a separate living area which leads out to a private balcony, allowing lovely views out to the River Thames and the City Of London. The apartment benefits from two well proportioned double bedrooms, a smart bathroom and separate WC.

Dunedin House is moments from local amenities & the open green spaces of Barrier Park. Local transport links include London City Airport (DLR) & Canning



PROPERTY FEATURES

- + Two Bedroom Apartment
- + 13th Floor Location
- + 638 St. Ft Internally
- + Great Investment Opportunity
- + Close to King George V & City Airport DRL

PROPERTY FEATURES

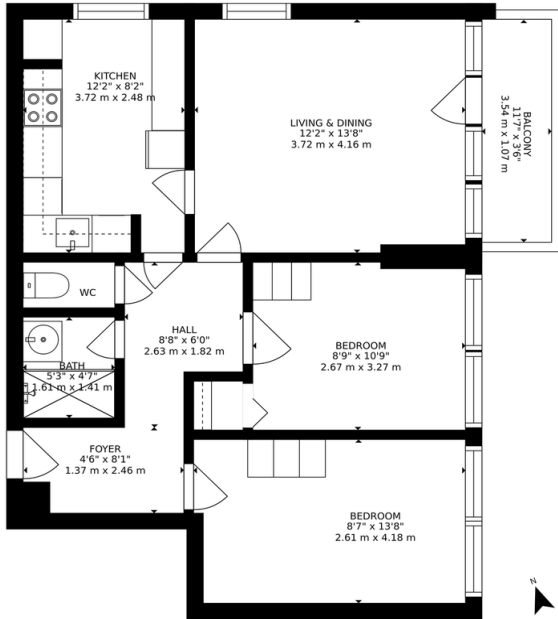
- + Stunning Views Out To The River Thames
- + Service Charge: £2,700.00 Per Annum
- + Ground Rent: £10.00 Per Annum
- + Lease Length Remaining: 108 Years
- + Council Tax: Band A

FOR SALE

DUNEDIN HOUSE, NORTH WOOLWICH, E16

Dunedin House, E16
2 bedroom apartment - 13th floor

MADISON BROOK
INTERNATIONAL



Approx. Internal Area
638 Sqft / 59 Sqm
(Excl. Balcony)

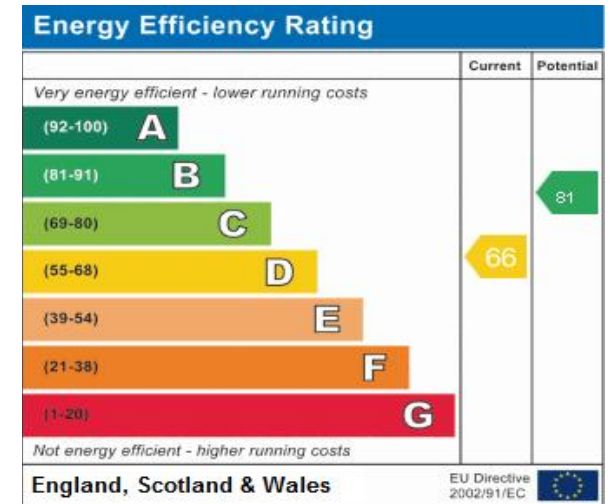


Illustration for identification purposes only.
Measurements are approximate. Not to scale.

£265,000 LEASEHOLD



- + Ref: 12736
- + Availability: For Sale
- + Bedrooms : 2
- + Bathrooms: 1
- + Reception Rooms: 1
- + Tenure: Leasehold



Madison Brook International

Unit B, 20 Western Gateway, Royal Victoria Dock, London, E16 1BS

T: 020 3946 6000

E: docklands@madisonbrook.com

MADISONBROOK.COM

MADISON BROOK
INTERNATIONAL

[f](#) [in](#) Madison Brook International [T](#) [@MadisonBrookInt](#)

