



FOR SALE

Bewley Street Wimbledon, SW19 Asking Price of £480,000 Leasehold

MARTIN&CO

Bewley Street Wimbledon, SW19

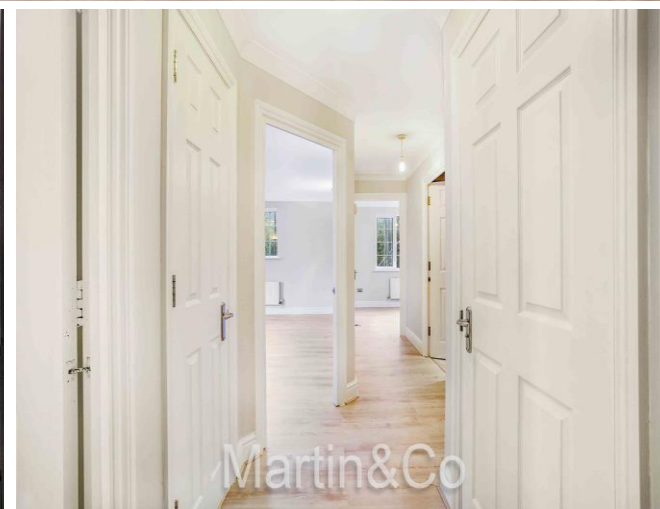
- 2 DOUBLE BEDROOMS
- BATHROOM & EN-SUITE SHOWER ROOM
- SECOND FLOOR FLAT WITH LIFT ACCESS
- PRIVATE BALCONY WITH SPACE FOR GUESTS
- ALLOCATED PARKING SPACE
- ENTRY PHONE SECURITY
- JUST REFURBISHED + NEW KITCHEN & BOILER
- MODERN DÉCOR & FLOOR COVERINGS
- NO CHAIN + ACCESSIBLE TO MORDEN TUBE
- KEYS HELD

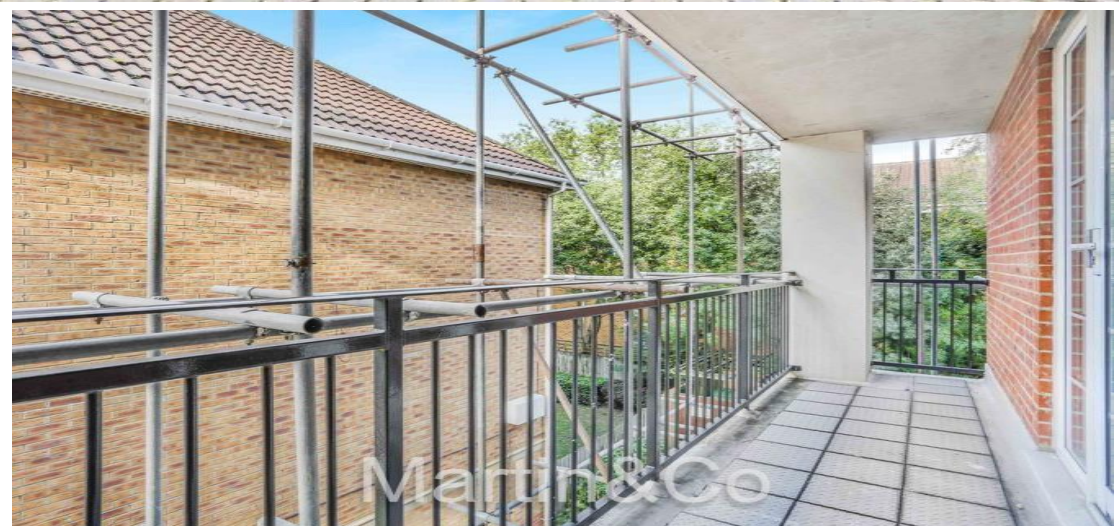
A superb 2 double bedroom, two bathroom (1 en-suite) second floor flat with a PRIVATE BALCONY & ALLOATED PARKING, within this modern apartment block on the South Wimbledon/Colliers Wood border.

Just extensively refurbished to a high standard, including a new luxury modern fitted kitchen with new appliances, new GCH boiler, completely redecorated with modern Decor & matching floor coverings.

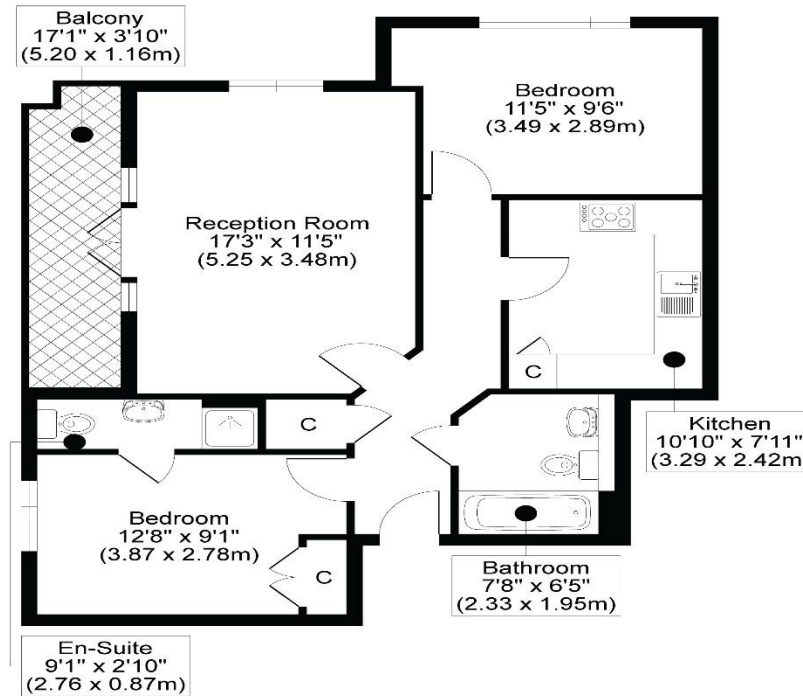
The modern development is set in a cul-de-sac, close to the river Wandle off North Road in South Wimbledon, walking distance of Colliers Wood Northern Line Tube station. Long Lease & NO CHAIN.

Viewing highly recommended.





BEWLEY STREET, SW19
TOTAL APPROX FLOORPLAN AREA 692 SQ.FT (64 SQ.M)
SECOND FLOOR



All measurements, walls, doors, windows, fittings and their appliances, their size and locations are shown conventionally and are approximate only and cannot be regarded as being a representation either by the seller or his agent.

optic
MEDIA
opticmedia.co.uk

Martin & Co Wimbledon

32 Stonecot Hill • Sutton • SM3 9HE

T: 0208 337 9647 • E: SUTTON@MARTINCO.COM

0208 546 8822

<http://www.martinco.com/>

MARTIN&CO

Accuracy: References to the Tenure of a Property are based on information supplied by the Seller. The Agent has not had sight of the title documents. A Buyer is advised to obtain verification from their Solicitor. Items shown in photographs including but not limited to carpets, fixtures and fittings are not included unless specifically mentioned within the sales particulars. They may however be available by separate negotiation. Buyers must check the availability of any property and make an appointment to view before embarking on any journey to see a property. No person in the employment of the agent has any authority to make any representation about the property, and accordingly any information given is entirely without responsibility on the part of the agents, sellers(s) or lessors(s). Any property particulars are not an offer or contract, nor form part of one. **Sonic / laser Tape:** Measurements taken using a sonic / laser tape measure may be subject to a small margin of error. **All Measurements:** All Measurements are Approximate. **Services Not tested:** The Agent has not tested any apparatus, equipment, fixtures and fittings or services and so cannot verify that they are in working order or fit for the purpose. A Buyer is advised to obtain verification from their Solicitor or Surveyor. **Mortgage & Financial Advice:** The Martin & Co mortgage service is provided by Beazer House, Lower Bristol Road, Bath, BA2 3BA. Authorised and regulated by the Financial Conduct Authority. Their FCA number is 143002. YOUR HOME IS AT RISK IF YOU DO NOT KEEP UP YOUR MORTGAGE OR OTHER LOANS SECURED ON IT. Full written quotation available on request. A suitable life policy may be required. Loans subject to status. Minimum age 18. If you are making a cash offer, we shall require written confirmation of the source of your funds in order that our client may make an informed decision

