



- Three Bedroom Semi-Detached House
- Large Spacious Gardens
- Master Bedroom & En-suite
- Close Transport Links

## Doddfell Close, Washington, Tyne And Wear

Offers Over £180,000

Fantastic opportunity to purchase this outstanding three bedroom semi detached property located in the popular Mayfield area, close to local shops, schools and amenities. The property boasts a large amount of living accommodation, as well as wrap around gardens to the front, rear and side.





## Property Description

SEVEN KEYS welcome to the market this outstanding three bedroom-semi detached property, located in Washington, Tyne and Wear. The property benefits from good transport links via the A1(M) and A194 to surrounding areas.

Much improved and well maintained there is a lot of accommodation on offer with this property. Briefly comprising of entrance hallways and downstairs WC, living room, dining room, kitchen and large wrap around conservatory with warm roof to the downstairs. Whilst to the first floor there are three bedrooms, including master with en-suite and family bathroom.

Externally, there are large wrap around gardens, detached garage and driveway providing off street parking.

Book your viewing online today at [SevenKeys.co.uk](http://SevenKeys.co.uk).

### ENTRANCE HALL

Double glazed entrance door, staircase to the first floor, laminate flooring, coving to the ceiling and a double radiator.

### DOWNSTAIRS WC

WC downstairs, toilet, wash basin.

### LIVING ROOM

Double glazed window to the front, television point, coving, two single radiators, laminate flooring and double doors into the dining room.

### DINING ROOM

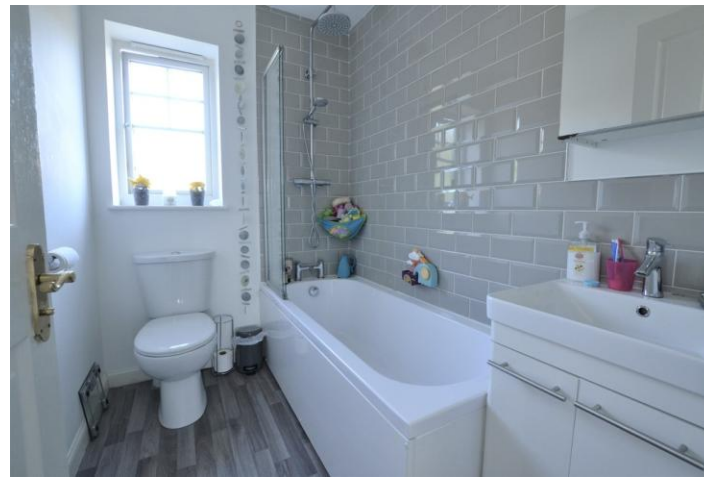
Coving, ceiling rose, single radiator, double glazed French doors to the conservatory, built in cupboard and a door into the kitchen.

### KITCHEN

Fitted wall and base units with work surfaces incorporating single drainer sink unit, built in electric oven with gas hob, space for washing machine, space for dishwasher, part tiled walls, double







glazed window to the rear.

#### **CONSERVATORY**

Double glazed windows to the rear and side, double glazed French doors into the garden, wall heater, wall lights, laminate flooring and tiled warm roof.

#### **MASTER BEDROOM**

Double glazed window to the rear, carpet, single radiator and door into en-suite.

#### **EN-SUITE**

Low level toilet, wash basin and vanity unit, separate corner shower with tiled surround.



#### **BEDROOM TWO**

Bedroom with double glazed windows, radiator and laminate flooring.

#### **BEDROOM THREE**

Double glazed window to the front and built in cupboard.

#### **GARAGE**

Detached garage with up and over door, power, light and double glazed side aspect door.









%epcGraph\_c\_1\_334%

THIS FLOORPLAN IS PROVIDED WITHOUT WARRANTY OF ANY KIND. SEVEN KEYS DISCLAIMS ANY WARRANTY INCLUDING, WITHOUT LIMITATION, SATISFACTORY QUALITY OR ACCURACY OF DIMENSIONS.

Boston House, Unit 2 Fifth Avenue,  
 Team Valley Trading Estate,  
 Gateshead, Tyne And Wear, NE11  
 0HF

[www.sevenkeys.co.uk](http://www.sevenkeys.co.uk)  
 0191 4971797  
[info@sevenkeys.co.uk](mailto:info@sevenkeys.co.uk)

Agents Note: Whilst every care has been taken to prepare these particulars, they are for guidance purposes only. All measurements are approximate and are for general guidance purposes only and whilst every care has been taken to ensure their accuracy, they should not be relied upon and potential buyers/tenants are advised to recheck the measurements