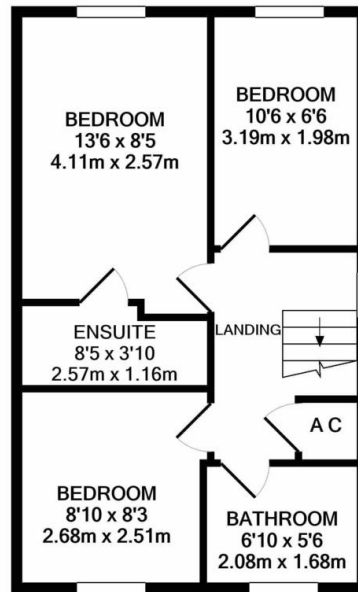
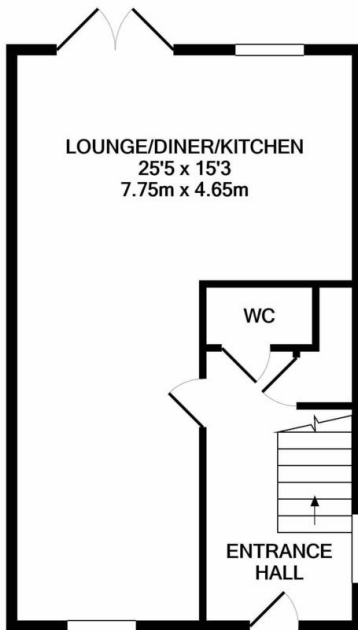




Property Summary

Beautiful modern family home for sale in Wigston. Built in 2015 this semi detached property comprises entrance hall, downstairs w.c., open plan living/kitchen/diner, three bedrooms, en-suite to master, family bathroom, rear garden with covered decked area and tandem driveway to the rear. This property is a real must see so call Phillips George to book your viewing today!

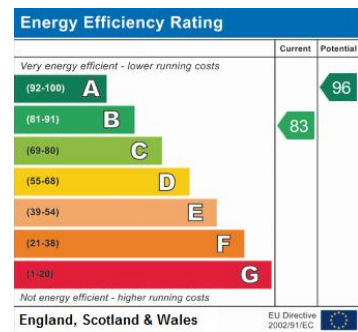


GROUND FLOOR
APPROX. FLOOR
AREA 388 SQ.FT.
(36.0 SQ.M.)

1ST FLOOR
APPROX. FLOOR
AREA 388 SQ.FT.
(36.0 SQ.M.)

FLOOR PLAN BY PHILLIPS GEORGE
TOTAL APPROX. FLOOR AREA 776 SQ.FT. (72.1 SQ.M.)

Whilst every attempt has been made to ensure the accuracy of the floor plan contained here, measurements of doors, windows, rooms and any other items are approximate and no responsibility is taken for any error, omission, or mis-statement. This plan is for illustrative purposes only and should be used as such by any prospective purchaser. The services, systems and appliances shown have not been tested and no guarantee as to their operability or efficiency can be given
Made with Metropix ©2021



- Semi Detached Home
- Built In 2015
- Beautiful Throughout
- Three Bedrooms
- En-Suite To Master
- Tandem Driveway
- Covered Decked Area
- Open Plan Living

phillips george | sales & lettings

Agents Note: Whilst every care has been taken to prepare these sales particulars, they are for guidance purposes only. All measurements are approximate and for general guidance purposes only and whilst every care has been taken to ensure their accuracy, they should not be relied upon and potential buyers are advised to recheck the measurements

🏠 46 Long Street, Wigston, Leicestershire, LE18 2AH

✉ info@phillipsgeorge.co.uk

☎ 0116 216 8178

