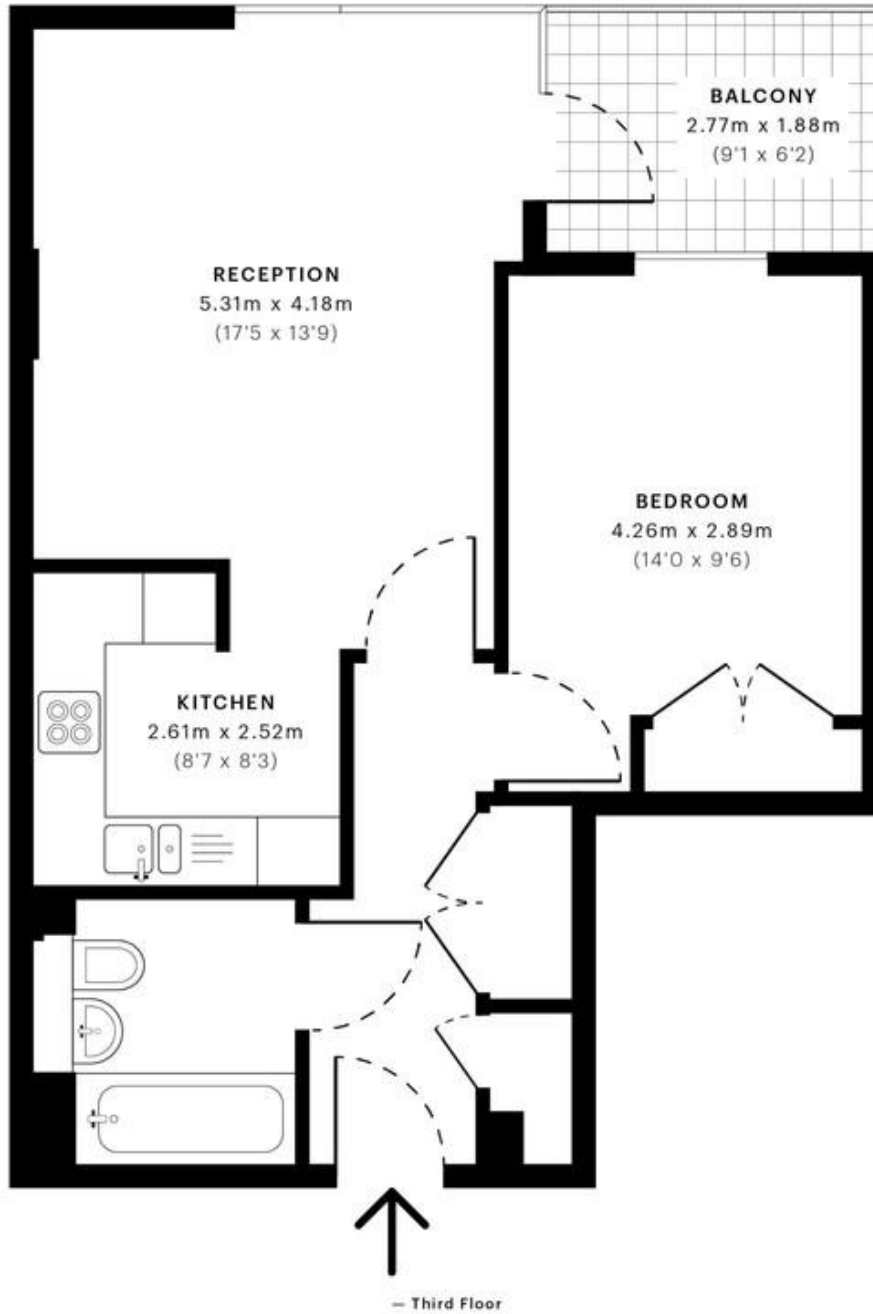




Zenith Close, London £330,000 Leasehold

Mile are pleased to offer this spacious one bedroom flat for sale. The property consists of a large bedroom, a family bathroom, a large reception room with a semi open plan fully fitted kitchen. The apartment also benefits of a private balcony and a secured underground parking space. The property has got an ESW1 certificate and must be seen to avoid disappointment!! Located a short 5-7 min walk to the station and shops.

- One bedroom apartment
- modern
- secure underground parking
- balcony
- Wood flooring
- LOCATED 5 - 8 MIN WALK TO STATION
- ESW1 Certificate
- MUST BE SEEN
- CLOSE TO LOCAL SHOPS
- Lots of Storage



GROSS INTERNAL AREA (GIA)
The footprint of the property
51.11 sqm / 550.14 sqft

NET INTERNAL AREA (NIA)
Excludes walls and external features
Includes washrooms, restricted head height
48.67 sqm / 523.88 sqft

EXTERNAL STRUCTURAL FEATURES
Balconies, terraces, verandas etc.
5.20 sqm / 55.97 sqft

RESTRICTED HEAD HEIGHT
Limited use area under 1.5 m
0.00 sqm / 0.00 sqft