



Burlington Gate, 25 Cork Street, Mayfair W1S 3NB

Sale Price: £5,500pw

*Contact: Gemma Pugh 020 7486 9665
gemma@londonhouse.co.uk*



Located in the heart of Mayfair, moments from Burlington Arcade and Bond Street this beautiful apartment is at the heart of London's art scene.

Located in the heart of Mayfair, moments from Burlington Arcade and Bond Street this beautiful apartment is at the heart of London's art scene. Rewind in the ultimate entertaining space with two terraces, three double bedroom and vast living space in the comfort of an apartment that offers a twenty four hour concierge. Additional benefits include a state-of-the-art gym managed by Bodyism, a sauna and treatment room and two underground parking spaces.

2 Terraces
Two Underground Parking
Sauna
Treatment Room
Gym
24hr Concierge
CCTV

020 7486 9665 londonhouse.co.uk

65 Weymouth Street, London W1G 8NU



Burlington Gate, 25 Cork Street, Mayfair W1S 3NB



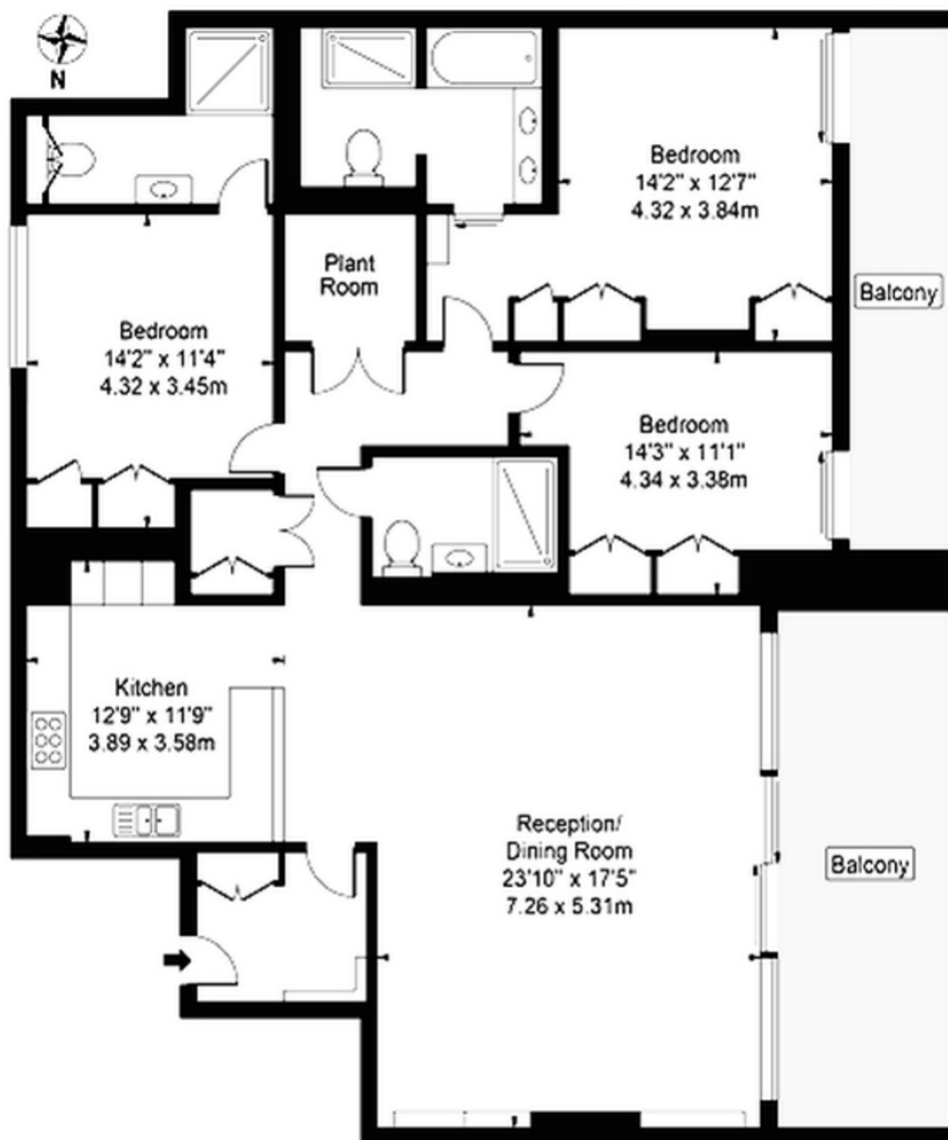
020 7486 9665 londonhouse.co.uk

65 Weymouth Street, London W1G 8NU

Burlington Gate, 25 Cork Street, Mayfair W1S 3NB

Burlington Gate

Approx. Gross Internal Area 1568 Sq Ft - 145.67 Sq M



For Illustration Purposes Only - Not To Scale

This floor plan should be used as a general outline for guidance only and does not constitute in whole or in part an offer or contract.
 Any intending purchaser or lessee should satisfy themselves by inspection, searches, enquiries and full survey as to the correctness of each statement.
 Any areas, measurements or distances quoted are approximate and should not be used to value a property or be the basis of any sale or let.



Burlington Gate, 25 Cork Street, Mayfair W1S 3NB

EPC

Score	Energy rating	Current	Potential
92+	A		
81-91	B	87 B	87 B
69-80	C		
55-68	D		
39-54	E		
21-38	F		
1-20	G		

Fees and Charges

Upfront payments/fees for letting this property, if it is an AST letting, consist only of the rent, tenancy deposit and any agreed holding deposit (if applicable). For a list of administrative payments and fees applicable to all other lettings, please contact us for further information.

Disclaimer

These particulars have been produced as a general guide for this property only and no other purpose. They are not an offer or contract. You should not rely on statements in these particulars or by word of mouth or in writing as being factually accurate about the property, its condition or its value. Neither any primary agent or joint agent has any authority to make or give any representations or warranties in relation to the property, and accordingly any information given is entirely without responsibility on the part of the agents or lessor(s). The photographs show only certain parts of the property as they appeared at the time they were taken. Any areas, measurements and distances given are approximate only. Any reference to alterations to, or use of, any part of the property does not mean that any necessary planning, building regulations or other consent has been obtained nor have any services, equipment or facilities been tested. A lessee should satisfy themselves by inspection or otherwise. The VAT position relating to the property may change without notice. Please contact us for further information regarding the approved Client Money Protection (CMP) scheme and the property redress scheme which we are a member of.

020 7486 9665 londonhouse.co.uk

65 Weymouth Street, London W1G 8NU