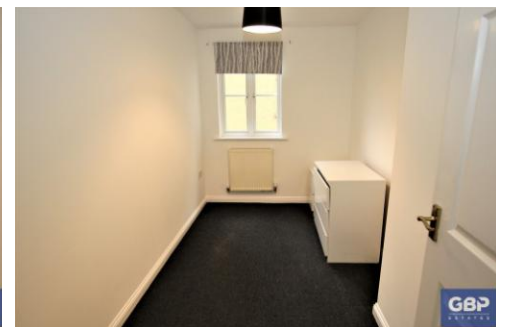




**Kidman Close, Romford**

Rent **£1,100 pcm**



Two-bedroom ground floor flat available to let within walking distance to Gidea Park Station, shops and restaurant. This property has a fully fitted kitchen with white goods, gas central heating and a gas hob and has allocated parking. Available now! Call GBP Estates to register your interest on 01708504455.

- **GROUND FLOOR FLAT**
- **TWO BEDROOMS**
- **FITTED KITCHEN WITH WHITE GOODS**
- **GAS CENTRAL HEATING**
- **ALLOCATED PARKING SPACE**
- **WITHIN WALKING DISTANCE TO GIDEA PARK STATION**
- **CLOSE TO LOCAL AMENITIES**
- **AVAILABLE NOW!**

## ACCOMMODATION

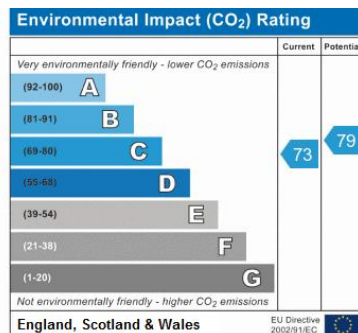
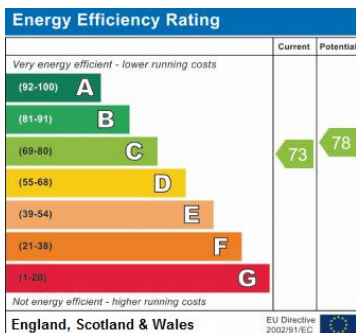
## HALLWAY

## LOUNGE

## BEDROOM ONE

## BEDROOM TWO

## BATHROOM



DISCLAIMER: These particulars, whilst believed to be accurate are set out as a general outline only for guidance and do not constitute any part of an offer or contract. Intending purchasers should not rely on them as statements or representation of fact, but must satisfy themselves by inspection or otherwise as to their accuracy. We have not carried out a detailed survey nor tested the services, appliances and specific fittings. Room sizes should not be relied upon for carpets and furnishings. The measurements given are approximate. No person in this firm's employment has the authority to make or give any representation or warranty in respect of the property.