

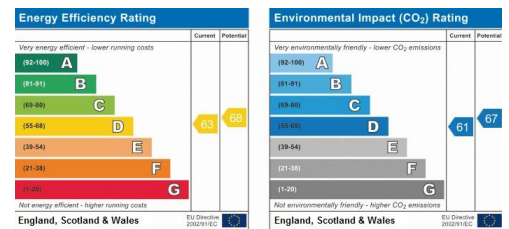
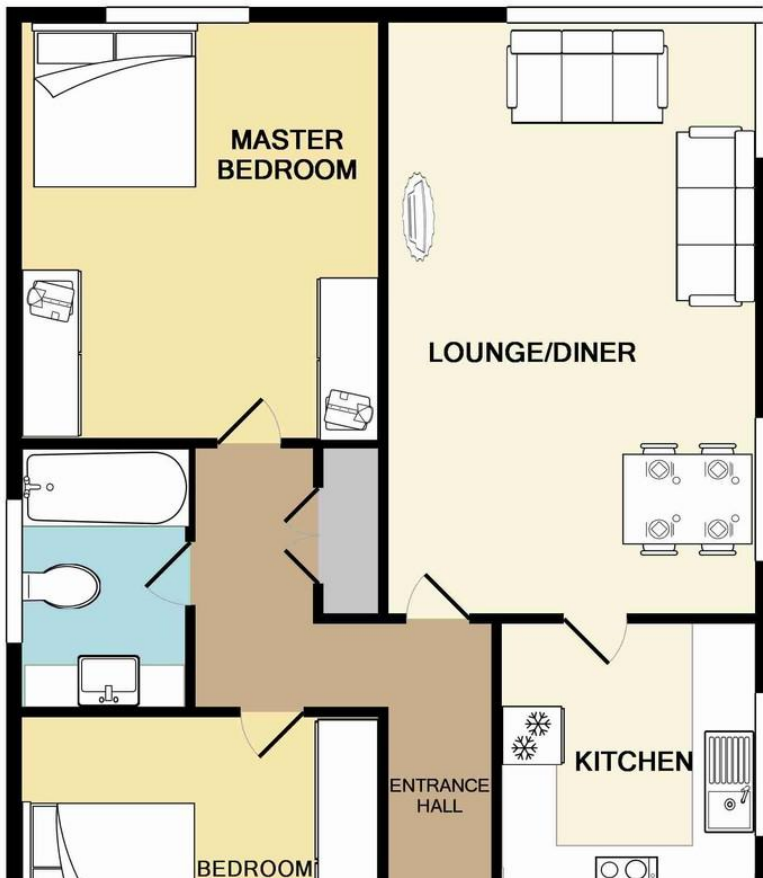


£1,450 pcm

89 Sudbury Avenue, Wembley, Middlesex, HA0 3BQ

# Property Summary

A very spacious two double bedroom First floor flat is available straightaway. The location of this flat is in much sought after the developments in North Wembley and over looking Vale Farm sports ground. This lovely flat comprises of fitted kitchen, a massive lounge, and two double bedrooms. Property further features double glaze throughout, gas central heating, family



- Apartment to rent
- Two Double Bedrooms
- Massive Reception
- Family Bathroom
- Fitted Modern Kitchen
- Double Glazed Throughout
- Good-size Storage Area
- Newly Decorated
- Communal Garden
- Secure Phone Entry System

38 Court Parade  
Wembley  
Middlesex  
HA0 3HS

www.propertyhubltd.com  
info@propertyhubltd.com  
0208 903 1002

Agents Note: Whilst every care has been taken to prepare these particulars, they are for guidance purposes only. All measurements are approximate are for general guidance purposes only and whilst every care has been taken to ensure their accuracy, they should not be relied upon and potential buyers/tenants are advised to recheck the measurements