



Naventis Court, Singleton Street

Blackpool, FY1 5AX

- **3 DOUBLE BEDROOMS**
- **RECENTLY DECORATED AND CARPETED**
- **MASTER BEDROOM EN-SUITE**
- **LIFT TO ALL FLOORS**

£600 pcm

EPC Rating '70'





Property Description

HALLWAY

INTERCOM PHONE, NEW CARPETS
2 STORAGE CUPBOARDS, ELECTRIC HEATER

LOUNGE

7' 17" x 3' 36" (2.57m x 1.83m) DOUBLE GLAZED
WINDOW, 2 ELECTRIC HEATERS, NEW CARPETS,
WALL LIGHTS

BEDROOM 1

3' 56" x 1' 98" (2.34m x 2.79m) DOUBLE GLAZED
WINDOW, ELECTRIC HEATER

BEDROOM 2

3' 50" x 2' 71" (2.18m x 2.41m) DOUBLE GLAZED,
ELECTRIC HEATER

BEDROOM 3 - ENSUITE

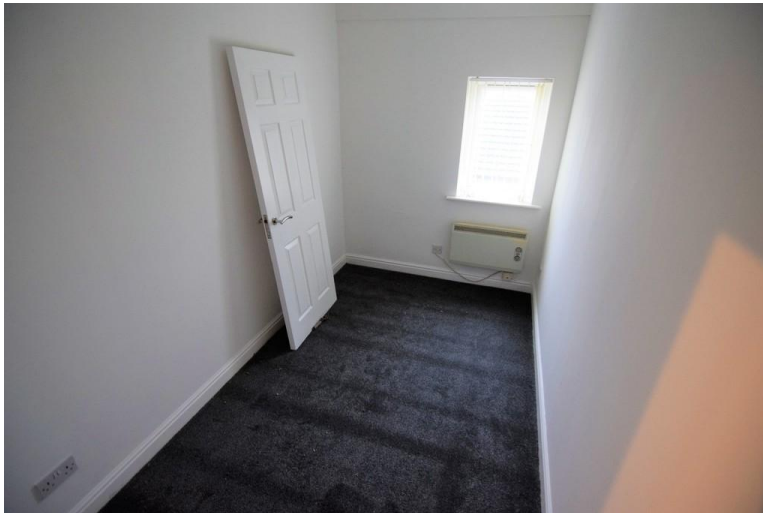
5' 53" x 2' 44" (2.87m x 1.73m) DOUBLE GLAZED,
ELECTRIC HEATER, FITTED ROBES IN CORNER OF
ROOM

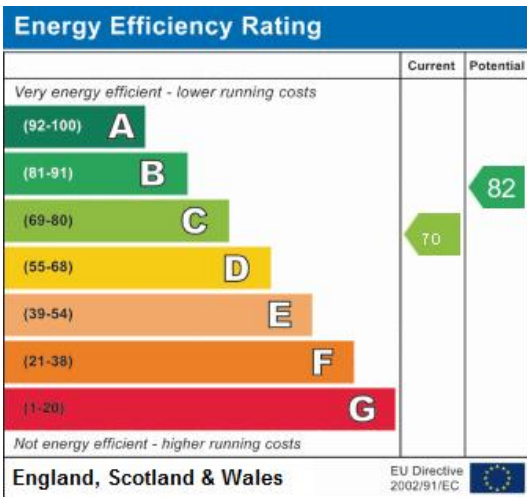


LEADING INTO EN SUITE - WITH WC, SHOWER WITH ELECTRIC SHOWER OVER, EXTRACTOR, ELECTRIC HEATER

BATHROOM

2' 48" x 2' 69" (1.83m x 2.36m) MODERN BATHROOM WITH 3 PIECE SUITE, BATH, SHOWER OVER, WC AND WASH HAND BASIN





Address:
Naventis Court

21 Counce Street
Blackpool
Lancashire
FY1 3LA

www.moveholmes.co.uk
01253 928200
enquiries@moveholmes.co.uk

Agents Note: Whilst every care has been taken to prepare these sales particulars, they are for guidance purposes only. All measurements are approximate and are for general guidance purposes only and whilst every care has been taken to ensure their accuracy, they should not be relied upon and potential buyers are advised to recheck the measurements