



PALACE GATE | KENSINGTON W8



A TRULY EXCEPTIONAL APARTMENT 2623 SQ. FT (243.7 SQ. METRES)

A truly exceptional penthouse apartment with private lift occupying the top two floors of this elegant stucco building and with superb entertaining space. This bright and beautifully presented flat extends to around 2,263 sq ft/ 243.7 sq m and has a generous entrance hallway leading to a high-ceilinged double drawing room and dining room.

There is also a study and fully fitted, eat in kitchen on this floor as well as a guest cloakroom and the lift comes to a lobby here. On a mezzanine level there is a well-appointed master bedroom with large dressing room and en suite shower room and there are three further bedrooms all with en-suite bathrooms on the top floor.

Palace Gate is ideally situated for all the amenities of Kensington High Street and Gloucester Road as well as being moments from the green spaces of Kensington Gardens and Hyde Park. It is also well served with schools being close to The Lycée as well as having superb transport links - the apartment is close to both High Street Kensington underground and Gloucester Road (District Line).





ACCOMMODATION & AMENITIES

Drawing Room | Dining Room | Study | Master bedroom with an en suite bathroom | 3 further bedrooms with en suite bathrooms
Guest cloakroom | Large eat in kitchen | Private lift | 2,623 sq ft/ 243.7 sq metres

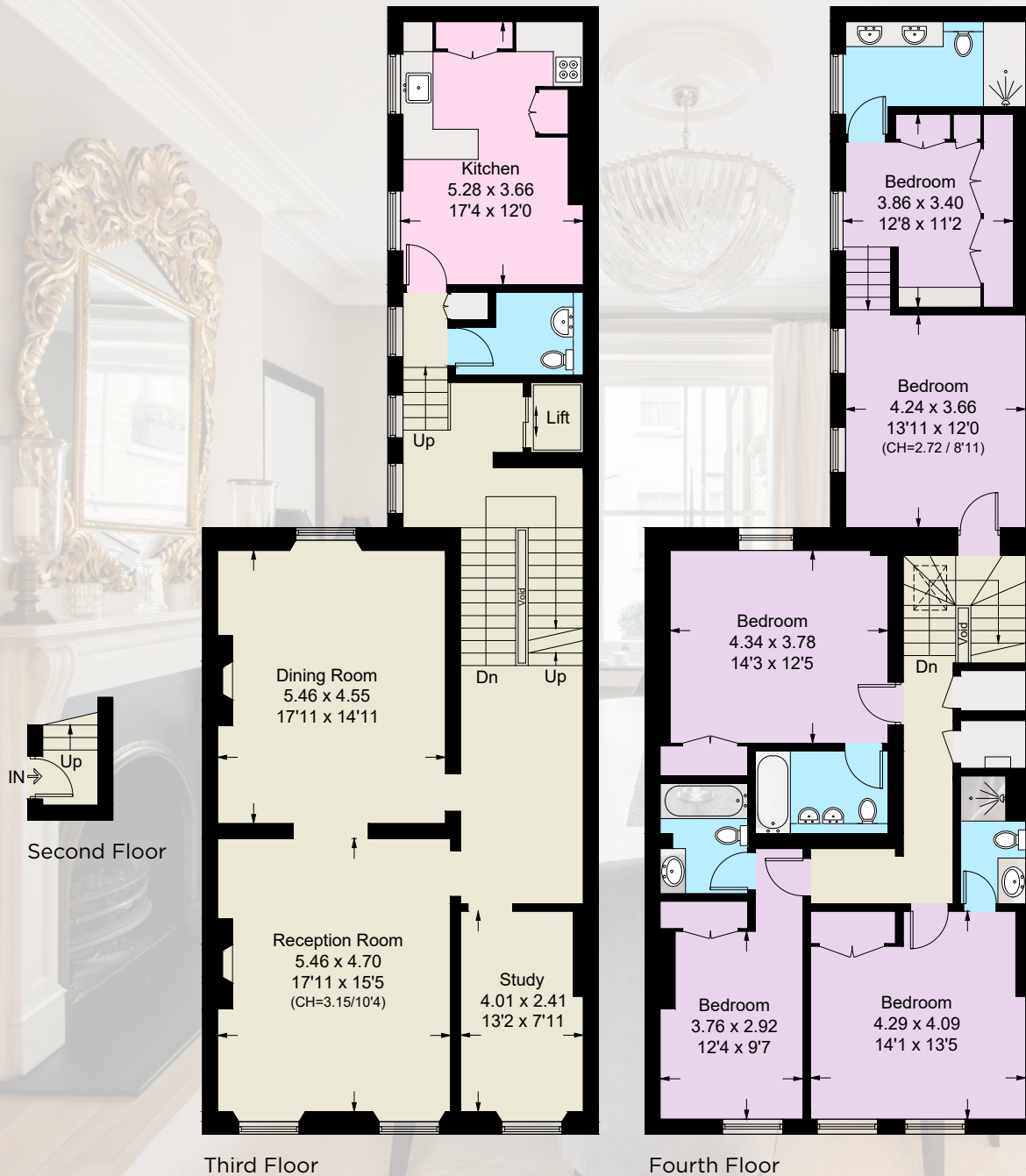
TERMS

Asking Price On application | Tenure Share of Freehold | Service Charge £8,211 per annum

Local Authority The Royal Borough of Kensington and Chelsea



APPROXIMATE GROSS INTERNAL AREA
 (EXCLUDING VOID, INCLUDING LIFT)
 2,623 SQUARE FEET / 243.7 SQUARE METRES
 INCLUDING LIMITED USE AREA
 31 SQUARE FEET / 2.9 SQUARE METRES



HARWOOD
 ADVISORY

SAMI ROBERTSON
 T: +44 (0)7748 508 891 E: sami@harwoodadvisory.com
 W: www.harwoodadvisory.com

MASKELLS

71 WALTON STREET, LONDON, SW3 2HT
 +44 (0)207 581 2216
 www.maskells.co.uk sales@maskells.co.uk

We wish to advise prospective purchasers that we have prepared these sales particulars as a rough guide. We have not carried out a detailed survey or tested the services, appliances or specific fittings. Measurements are approximate.