



we are
morfittsmith

Beechwood Road,
Hillsborough,
Sheffield,
S6 4LN



A lovingly maintained example of a Hillsborough 3-bed: Beechwood Road.

Retaining many of its period features, this charming mid-terrace is a welcoming backdrop for family life.





Time to explore.

Beechwood Road can be found in Hillsborough, amongst the most beloved communities in north-west Sheffield. There is always plenty going on in Hillsborough including charming shopping and dining facilities. However, its separation from the city centre also lends it a quieter pace of life, making it a fantastic family neighbourhood without sacrificing convenience. There are superb transport links available via bus, SuperTram, and the handy Penistone Road (A61) nearby, making this an ideal base of operations for commuting across Sheffield or even beyond the Steel City. There is no shortage of natural beauty in the area either: local attractions range from the magnificent Hillsborough Park to the exquisite River Don which runs through the community. Hillsborough Park is a wonderfully welcoming community space with sports facilities, a walled garden, and a library at its heart. Beechwood Road benefits from handy on-road parking, making this well-connected spot the perfect base-of-operations.

Step inside your new home.

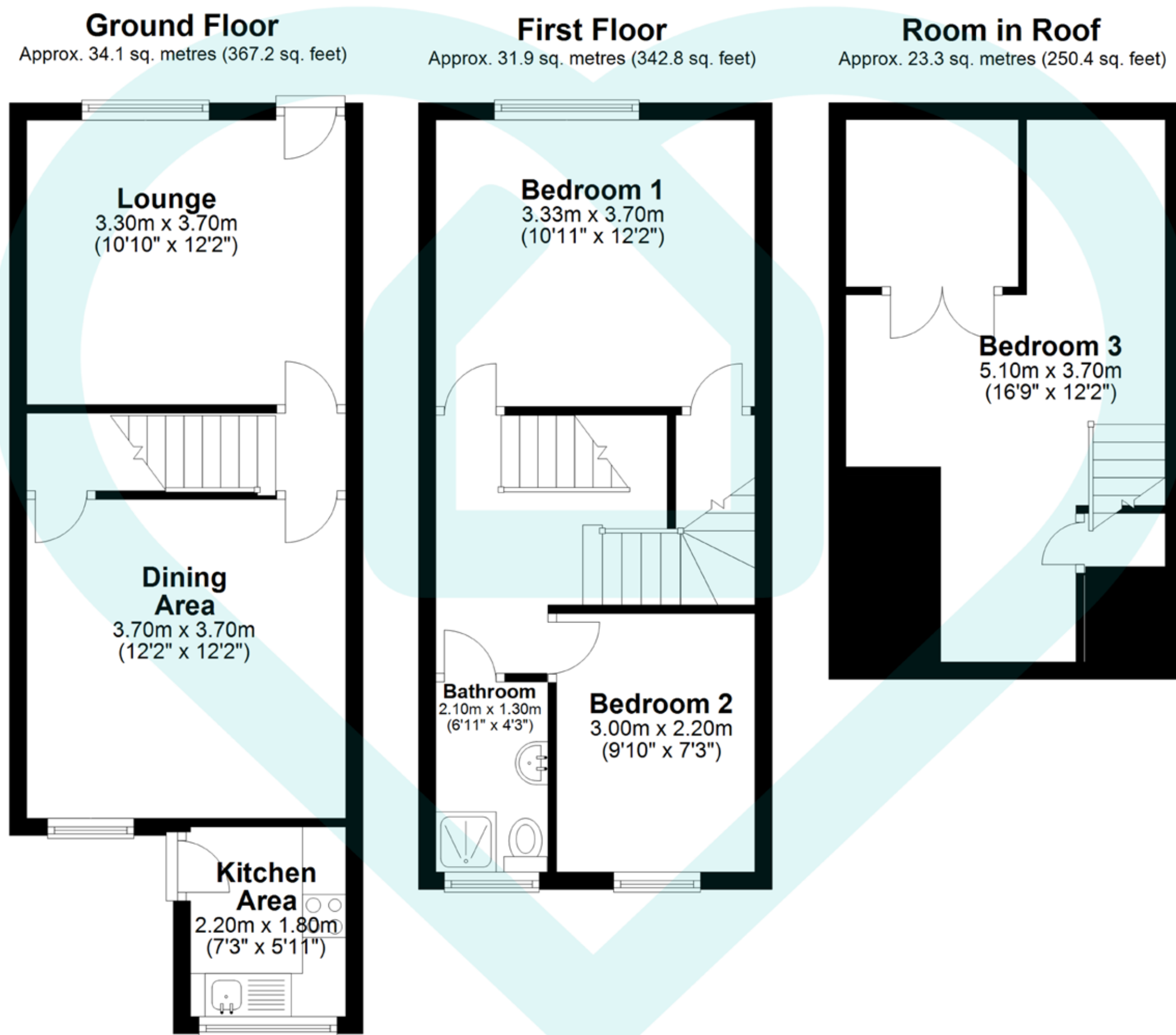
You enter the home via the lounge, a lovely full-width space that benefits from the traditional structure of broad rooms and high ceilings which make terrace homes so popular. There is a practical electric fireplace with generous space for seating and entertainments. This leads through to the cheerful dining room and off-shoot kitchen. The dining room is another sizeable space with large alcoves and handy access to the cellar for storage. There is an elegant fireplace feature, abundant natural light, and room for a large dining set. The kitchen is smartly fitted with bright spotlighting and neutral décor. It boasts plenty of worktop and cupboard space for preparing meals, functional integrated appliances, and even room for utilities.

The kitchen door takes you out to the landscaped rear garden, a charming environment with luscious shrubs and flower beds perfect for any keen gardeners and ample room for outdoor furniture. Back inside, the first floor is home to two bedrooms and a sleek shower room. Bedroom 1 is a fantastic size with substantial fitted storage over the stairs and lots of space for a large double bed. Bedroom 2 is snigger in scale and would make an ideal single room for guests, growing children, or even a dedicated home office. The shower room contains a sleek three-piece suite with a luxurious walk-in shower and waterfall shower head. This bright space also has handy under-the-sink storage and a heated towel radiator. Occupying the second floor is bedroom 3, an extensive attic room with lots of space for furniture, an attractive finish, and a broad skylight giving you incomparable views across Hillsborough.









Total area: approx. 89.2 sq. metres (960.4 sq. feet)

This floor plan is for illustrative purposes only. All measurements and layouts are approximations and do not necessarily capture the precise specifications of the property. No responsibility is taken for any error, omission, or misstatement. We always recommend viewing in person to confirm the exact floor



Score	Energy rating	Current	Potential
92+	A		
81-91	B		83 B
69-80	C		
55-68	D	56 D	
39-54	E		
21-38	F		
1-20	G		

IMPORTANT: we would like to inform prospective purchasers that these sales particulars have been prepared as a general guide only, A detailed survey has not been carried out, nor the services, appliances and fittings tested. Room sizes should not be relied upon for furnishing purposes and are approximate. If floor plans are included, they are for guidance only and illustration purposes only and may not be to scale. If there are any important matters likely to affect your decision to buy, please contact us before viewing the property.



The MorfittSmith Building,
67 Middlewood Road,
Sheffield, S6 4GX



0114 232 1764



www.morfittsmith.co.uk



sales@morfittsmith.co.uk



lettings@morfittsmith.co.uk



newhomes@morfittsmith.co.uk



@morfittsmith



@morfittsmith



MorfittSmith Estate & Letting Agent



morfittsmith



sales | lettings | new homes
