



Apartment 4, Somers Court, Chilcote Close, Torquay, TQ1  
**Guide Price: £350,000 - Leasehold**



# Apartment 4, Somers Court, Chilcote Close, Torquay, TQ1 (First Floor)

Exclusive New Development of Luxury Apartments (Available Autumn 2022)

- **\*\*RESERVE EARLY TO AVOID DISAPPOINTMENT\*\***
- Exciting New Development of 6 Luxury Apartments in St Marychurch
- High Spec Finish Including Oak Flooring & Doors
- Open Plan Lounge / Dining / Kitchen With Integrated Appliances
- 2 Double Bedrooms (Master En Suite)
- Luxury Shower Room
- All With A Balcony
- uPVC Double Glazing & Central Heating
- Underground Parking & Secure Cycle Store
- **\*\*\*AVAILABLE AUTUMN 2022\*\*\***



Superb New Development of Luxury Apartments With 2 Double Bedrooms, 2 Shower Rooms, Balcony & Underground Parking...

BE SURE TO REGISTER YOUR INTEREST IN THIS EXCLUSIVE NEW DEVELOPMENT BY SCANNING THE QR CODE ON SITE OR CALLING US TO REGISTER FOR UPDATES

As 2021 Regional Gold Winners of the Trusted Negotiator Awards, we are extremely excited to share this exclusive new luxury development of 6 apartments due to be completed by Autumn of 2022.

Accommodation for each luxury apartment comprises, open plan lounge/dining area/kitchen with integrated appliances, 2 double bedrooms (master with luxury en suite shower room) & additional shower room. All finished to an extremely high spec with oak flooring and doors, private balcony for relaxing/alfresco dining, uPVC double glazing, central heating, and under cover parking.

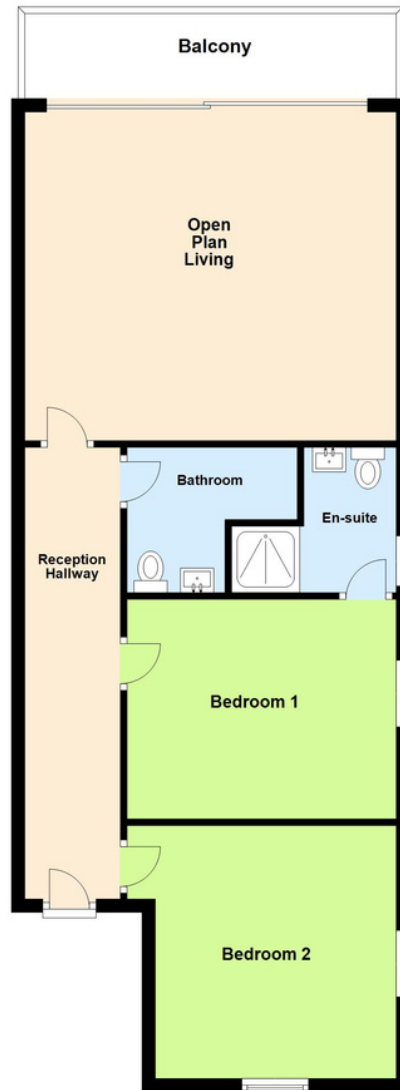


Located in this much sought after area of St Marychurch with its popular shopping precinct offering a range of shops, pubs and restaurants and close to local schools, doctors surgery, Torquay Golf Course, Babbacombe Downs & Cliff Railway leading to Oddicombe beach.



Please do not hesitate to contact the team at Absolute Sales & Lettings on **01803 214214** for more information or to arrange an accompanied viewing on this property.

## First Floor



## Have a property to sell or let?

If you are considering selling or letting your home, get in contact with us today on 01803 214214 to speak with one of our expert team who will be able to provide you with a free valuation of your home.



We refer potential purchasers to Sheehan Legal for conveyancing, Greenlight Mortgages for mortgages, McCluskey Surveyors for surveying & Team Removals for removals. It is your decision if you choose to deal with any of these companies however should you choose to use them we would receive a referral fee from them for recommending you to them as follows: Sheehan Legal £150, Greenlight Mortgages £50 to £300, McCluskey Surveyors £50, Team Removals £50. We have carefully selected these associates for the quality of their work and customer service levels.

Consumer Protection Regulations: We have not tested any apparatus, equipment, fixtures and fittings or services and so cannot verify that they are in working order or fit for the purpose. References to the Tenure of a Property are based on information supplied by the seller. We have not had sight of the Title Documents. A buyer is advised to obtain verification from their solicitor or surveyor. Floorplans shown are for guidance only and should not be relied upon. Items shown in photographs are NOT included unless specifically mentioned within these details. They may however be able by separate negotiation. You are advised to check the availability of this property before travelling any distance to view. Particulars are produced in good faith to the best of our knowledge and are set out as a general guide only.

