



FLAT 4, 19 WADHAM GARDENS, PRIMROSE HILL, NW3

A BEAUTIFULLY PRESENTED THREE BEDROOM, THREE BATHROOM TOP FLOOR APARTMENT PROVIDING 1741 SQ FT / 162 SQ M OF ACCOMMODATION. THE APARTMENT FORMS PART OF A HANDSOME DETACHED DOUBLE FRONTED HOUSE, AND IS LOCATED IN A QUIET TREE LINED ROAD A FEW MOMENTS FROM THE ENTRANCE TO PRIMROSE HILL PARK. THE PROPERTY IS CURRENTLY TENANTED.

- 3 BEDROOMS • 1 RECEPTION ROOM • 3 BATHROOMS (2 EN SUITE) •

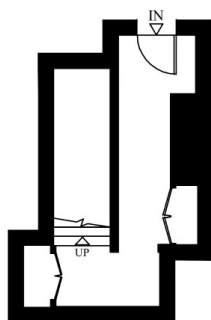
£2,650,000
LEASEHOLD





APARTMENT 4
19 WADHAM GARDENS
LONDON NW3

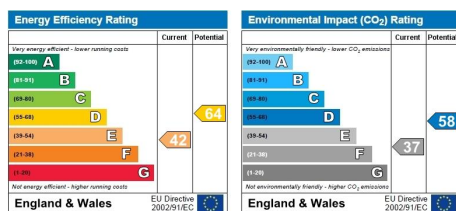
Gross Internal Area: 162 Sq. metres
1741 Sq. feet



FIRST FLOOR



SECOND FLOOR



8 WELLINGTON ROAD, ST JOHN'S WOOD, LONDON, NW8 9SP

THESE PARTICULARS ARE ISSUED FOR GUIDANCE ONLY. THEY ARE INTENDED TO GIVE A FAIR OVERALL DESCRIPTION OF THE PROPERTY AND NOT CONSTITUTE A WARRANTY OF ANY KIND OR TO BE AN OFFER OR CONTRACT IN WHOLE OR IN PART. NOTHING IN THESE PARTICULARS SHALL BE DEEMED TO CONSTITUTE A REPRESENTATION THAT THE PROPERTY IS IN GOOD STRUCTURAL CONDITION NOR THAT ANY SERVICES, APPLIANCES, EQUIPMENT OR FACILITIES ARE IN GOOD WORKING ORDER, NOTWITHSTANDING, THAT ALL INFORMATION CONTAINED IN THESE PARTICULARS, BOTH IN THE TEXT AND IN ANY PLANS AND PHOTOGRAPHS IS GIVEN IN GOOD FAITH. INTENDING PURCHASERS SHOULD MAKE THEIR OWN ENQUIRIES AS TO THE ACCURACY OF ALL MATTERS UPON WHICH THEY INTEND TO RELY. MEASUREMENTS ARE GIVEN FOR GUIDANCE ONLY AND MUST BE VERIFIED BY THE PURCHASER.