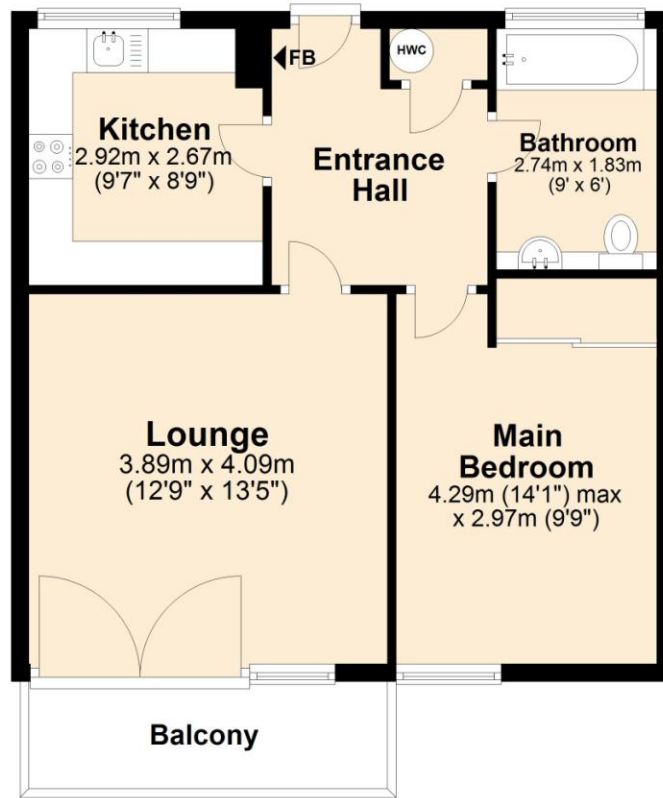


Mid Floor

Approx. 50.6 sq. metres (544.7 sq. feet)



Total area: approx. 50.6 sq. metres (544.7 sq. feet)

OUTSIDE

The apartment is situated in a modern, purpose-built block, accessed via a secure entry system and communal entrances with stairs and lifts to all floors. The property benefits from a city centre location yet with beautiful riverside walks from outside the block in both directions.

DIRECTIONS

From the roundabout at County Hall, take the exit onto Bracondale A147. At the traffic lights turn right onto King Street. Follow the road as it bears right towards Norwich City Football Ground, crossing Carrow Bridge before turning right onto Geoffrey Watling Way, just after Riverside Leisure Centre. The property is part of the apartment block on the right-hand side.

LOCAL AUTHORITY

Norwich

COUNCIL TAX BAND

B

Energy Efficiency Rating Current C 78 Potential C 80

01603 760 770
hello@dragonflylettings.com
www.dragonflylettings.com
Unit 4 Dragonfly Lane, Cringleford, Norfolk, NR4 7FF

Whilst we have endeavoured to ensure these details are a fair and accurate representation of the property at the point of listing, please note that they are for guidance purposes only and we do not seek advice from or liaise with management companies, planning departments or building control in their preparation. We strongly advise that you inspect the property and surrounding area on Google maps and street view prior to viewing. Please also note the photographs do not infer that items shown are included, the measurements quoted are approximate and the fixtures, fittings and appliances have not been tested, therefore no guarantee can be given that they are in working order. If there is any point which is of particular importance to you then please obtain professional confirmation of it.



Located just metres from the social and entertainment heart of the city and part of the Riverside development, this modern 1 bedroom mid floor apartment offers a lounge with balcony access, stylish kitchen and bathroom. A great city centre location!

Ashman Bank

Geoffrey Watling Way | Norwich
Norfolk | NR1 1HB

£850 pcm

Stylish mid floor apartment within a purpose-built apartment block

Situated in the heart of the Riverside development area of Norwich

Double bedroom featuring built-in storage

Stylish kitchen with integrated appliances

13'5 lounge with double doors to the balcony

Modern bathroom with 3-piece suite

Electric underfloor heating and double glazing

Stairs and lift access to all floors plus secure phone entry system

Excellent city centre location and stunning local riverside walks

Available mid-end June 2023

