



Flat 3, Mile End Road

London, E1 4UN

£1,600 pcm

Fees Apply

- Secure Private Development
- Open-Plan Kitchen/Lounge
- Double Bedroom
- Modern Neutral Décor
- Wooden Floors
- Excellent Transport Links





Property Description

A fantastic one bedroom, first floor flat located in the highly desirable Mile End Conservation Area, offering the ultimate in urban living accommodation. The property is ideal for professionals and situated within close proximity to a number of local amenities and retailers.

The bright and spacious living space is beautifully presented and is a perfect space for entertaining, whilst the modern high gloss, open-plan kitchen is fully integrated with all mod cons. The bedroom is well proportioned with fitted wardrobes and a beautifully finished bathroom with shower over bath. Furthermore the property carries a modern neutral décor throughout, wooden flooring, large traditional sash windows, gas central heating and recessed spot lights all-round.

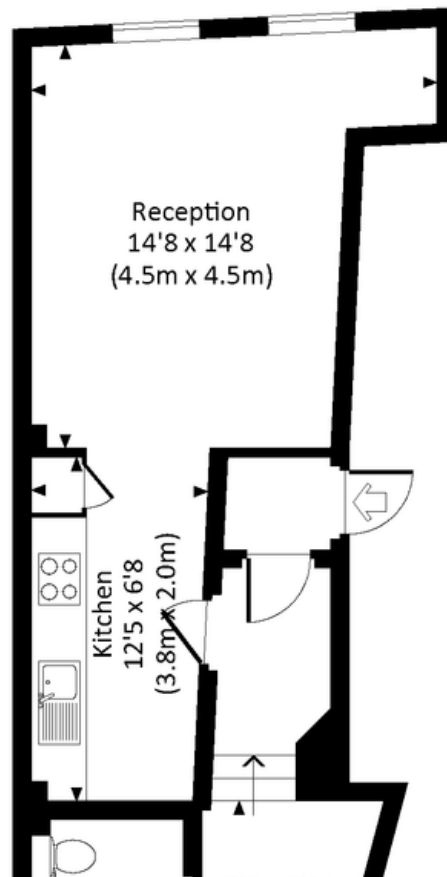
Local amenities include Stepney Green Park, Bethnal Green Gardens and St Bartholomew Gardens which are perfect for recreational activities including walks and bike rides. The property is also well served by the comprehensive range of shops, bars, restaurants and cafe's.

The closest underground stations are Stepney Green (District and Hammersmith & City lines) and Whitechapel station (London Overground, Hammersmith & City lines). Transport links also include daily buses and 24 hour routes, while for motorist there is easy access to the A12 and A13 for routes out of London to the East.



MILE END ROAD, E1

Approx. gross internal area
593 Sq Ft. / 55.1 Sq M.



Find us on   

[mydeposits.co.uk](https://www.mydeposits.co.uk)



rightmove
find your happy

Zoopla.co.uk

@PrimeLocation



Registered Office

Suite C, 36-40 Copperfield Road,
London, E3 4RR /08050057

www.netlettings.com
management@netlettings.com
020 8981 5551

Agents Note: Whilst every care has been taken to prepare these particulars, they are for guidance purposes only. All measurements are approximate are for general guidance purposes only and whilst every care has been taken to ensure their accuracy, they should not be relied upon and potential tenants are advised to recheck the measurements.