

MADISON BROOK
INTERNATIONAL



OCEANIS APARTMENTS, ROYAL VICTORIA DOCK, E16 1BY



OCEANIS APARTMENTS, ROYAL VICTORIA DOCK, E16

£174,000



PROPERTY SUMMARY

****SHARED OWNERSHIP- 35% SHARE**** This beautifully presented two bedroom apartment is located on the ground floor, has a secure, gated parking space and a 24 hour concierge.

Boasting 985 Sq. Ft, the property has a stylish open plan living and kitchen area with fully fitted appliances, two well proportioned double bedrooms and a separate, chic family bathroom. Additionally, the apartment has ample storage throughout and has been kept to a very nice standard.

Oceanis Apartments is located close to many shops and amenities on offer in the Canary Wharf Complex, while transport links to the City and West End include Royal Victoria Dock (DLR) & Custom House (DLR & Future Crossrail Station).



PROPERTY FEATURES

- + Two Bedroom Apartment
- + Ground Floor Location
- + 985 Sq. Ft Internally
- + Secure Gated Parking
- + Close to Royal Victoria Dock DLR

PROPERTY FEATURES

- + 24 Hour Concierge
- + Service Charge: £4,600.00 Per Annum
- + Ground Rent Included in Service Charge
- + Lease Length: 110 Years Remaining
- + Council Tax: Band F

FOR SALE

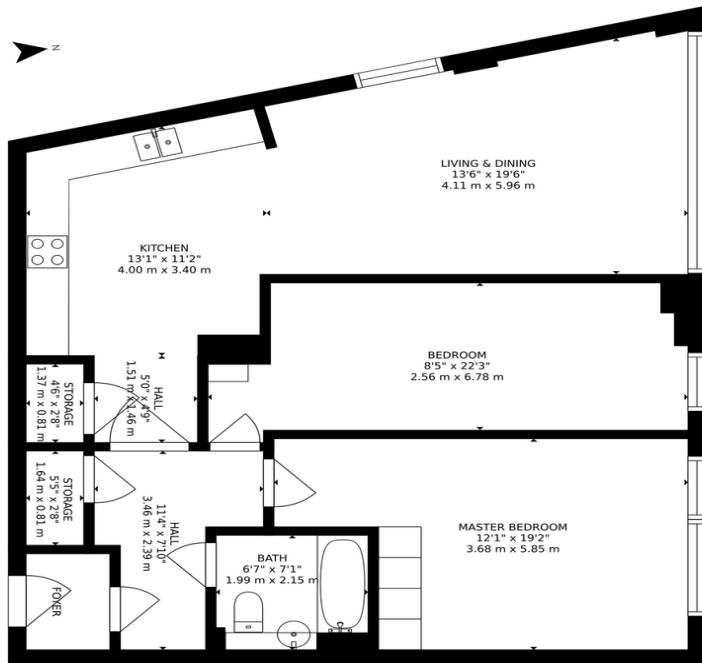
OCEANIS APARTMENTS, ROYAL VICTORIA DOCK, E16

£174,000 LEASEHOLD



Oceanis Apartments, E16
2 bedroom apartment - Ground floor

MADISON BROOK
INTERNATIONAL

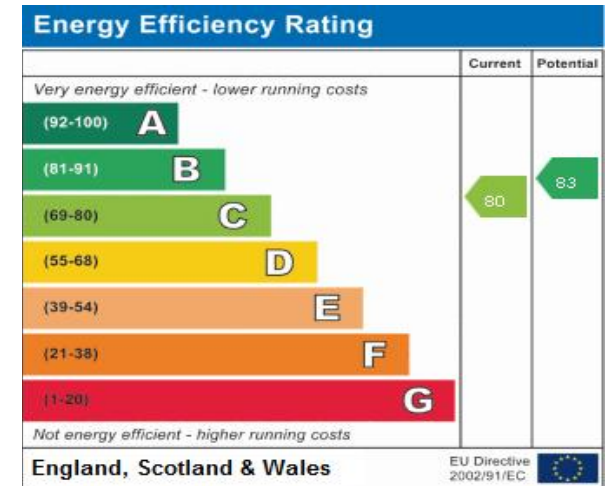


Approx. Internal Area
985 Sqft / 92 Sqm



Illustration for identification purposes only.
Measurements are approximate. Not to scale.

- + Ref: 10657
- + Availability: For Sale
- + Bedrooms : 2
- + Bathrooms: 1
- + Reception Rooms: 1
- + Tenure: Leasehold



Madison Brook International
Unit B, 20 Western Gateway, Royal Victoria Dock, London, E16 1BS
T: 020 3946 6000
E: docklands@madisonbrook.com
MADISONBROOK.COM

MADISON BROOK
INTERNATIONAL

Madison Brook International @MadisonBrookInt

