

Ashorne Close
REDDITCH

Offers In Excess Of
£200,000



Three Bedroom End Of Terrace Property

Features.

- THREE DOUBLE BEDROOMS
- BATHROOM
- GUEST CLOAKROOM
- MODERN KITCHEN/DINER
- LOUNGE
- CONSERVATORY
- GENEROUS REAR GARDEN
- POPULAR LOCATION

.....

Description.

Summary: A well presented three bedroom end of terrace property offered with a conservatory, modern fitted kitchen and generous rear garden. Situated in the popular location of Matchborough West Redditch.

Description: This property has been well maintained throughout, the accommodation briefly comprises:- An enclosed entrance porch with guest cloakroom, a modern yet traditional kitchen with a range of fitted units, space for a range master cooker, room for a table and chairs for more comfortable dining and access to the conservatory. A spacious lounge benefits from doors to the rear garden. A rising staircase leads to the first floor and offers a spacious master bedroom with built in wardrobes, two additional well proportioned bedrooms and the family bathroom with bath and shower over, basin and WC.

Outside: The front aspect of the property is approached by a small low maintenance fore garden and access to the main residence via and enclosed porch. The rear garden is generously proportioned with an array of well stocked borders, two seating areas, neatly maintained lawn, large storage shed and double gates to the rear - previously used for access to store a caravan within the garden.

Location: The nearby town of Redditch offers easy access to motorway links (M42, Jct 2&3) and there are good rail and bus links. There are also excellent leisure and entertainment facilities along with eateries and cultural attractions, and the Kingfisher Shopping Centre.



Room Dimensions.

Room Dimensions:

Porch

Downstairs WC

Hall

Kitchen/Diner: 16' 10" x 9' 8" (5.15m x 2.95m)

Lounge: 18' 0" x 13' 7" (5.50m x 4.15m) max

Conservatory: 12' 5" x 8' 8" (3.80m x 2.65m)

Stairs To First Floor Landing

Master Bedroom: 13' 9" x 9' 10" (4.20m x 3.00m)

Bedroom Two: 10' 9" x 10' 5" (3.30m x 3.20m)

Bedroom Three: 10' 5" x 6' 10" (3.20m x 2.10m)

Bathroom: 6' 11" x 6' 2" (2.12m x 1.90m)

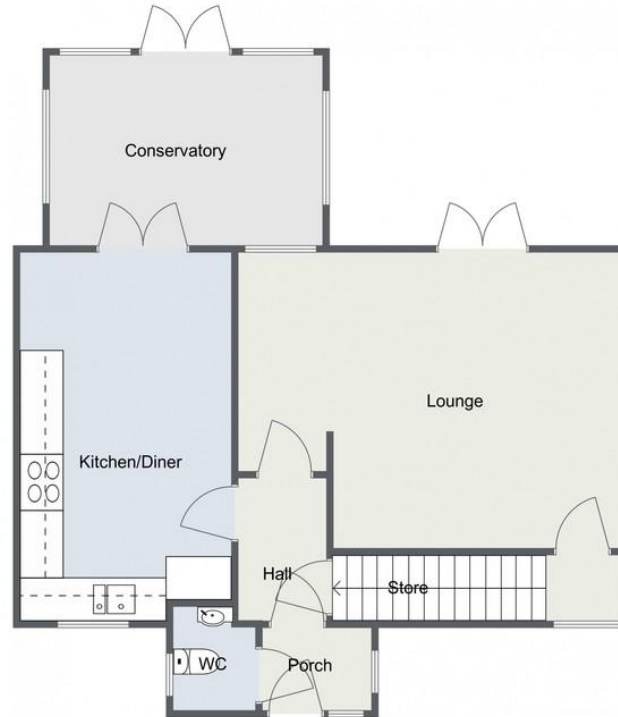
Please read the following: These particulars are for general guidance only and are based on information supplied and approved by the seller. Complete accuracy cannot be guaranteed and may be subject to errors and/or omissions. They do not constitute a contract or part of a contract in any way. We are not surveyors or conveyancing experts therefore we cannot and do not comment on the condition, issues relating to title or other legal issues that may affect this property. Interested parties should employ their own professionals to make enquiries before carrying out any transactional decisions.

Photographs are provided for illustrative purposes only and the items shown in these are not necessarily included in the sale, unless specifically stated. The mention of any fixtures, fittings and/or appliances does not imply that they are in full efficient working order and they have not been tested. All dimensions are approximate. We are not liable for any loss arising from the use of these details.



Ashorne Close, Redditch

Ground Floor



First Floor



Total Area Approx: 103.6 sq metres (1115 sq ft)

For illustrative purposes only. Decorative finishes, fixtures & fittings do not represent the current state of the property. Measurements are approximate & not to scale.
Floor Plans made using RoomSketcher.

EPC: TBC

COUNCIL TAX BAND: A

TENURE: Freehold

For more information on this house or to arrange a viewing please call the Redditch office on:

01527 540 654

Alternatively, you can scan below to view all of the details of this property online.



373 Evesham Road
Redditch
Worcestershire
B97 5JA