

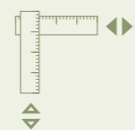


VIVIN

2 BED APARTMENT HOMES 6, 8 & 10

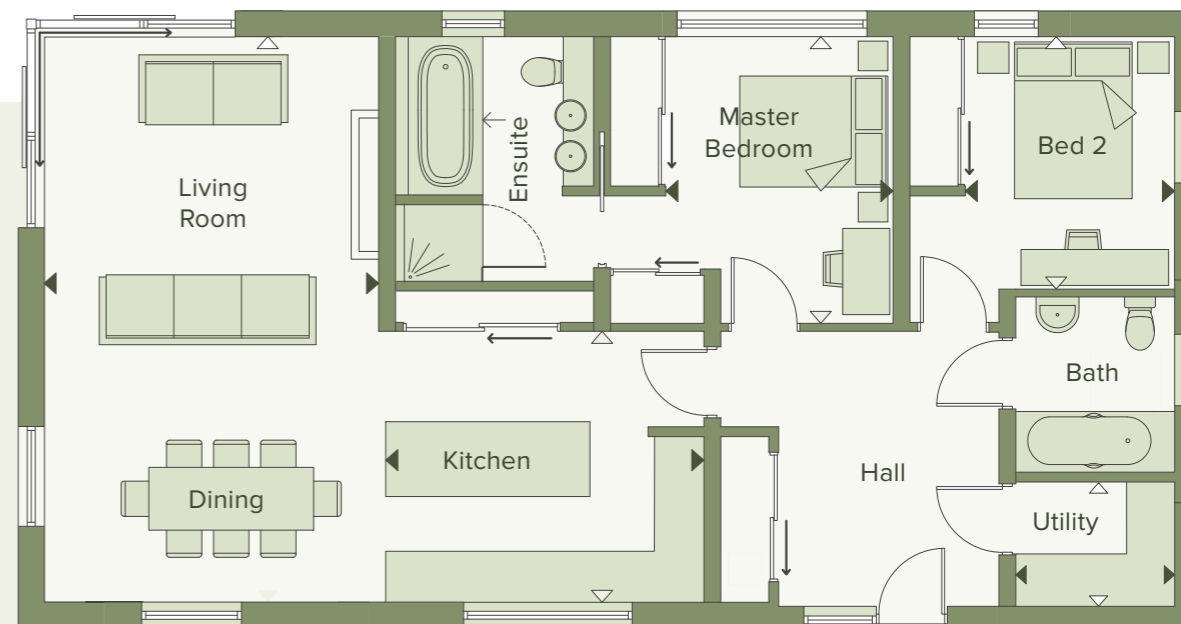
A deck or balcony leads from the sitting room with views of the wildlife pond. The upper apartments benefit from country views to the south. The Vivin has a separate utility room rather than the utility cupboard of the Moret. The penthouse has a dramatic cathedral ceiling to the living area and all kitchens incorporate a breakfast bar.

Note: Home 10 includes a hall extension.



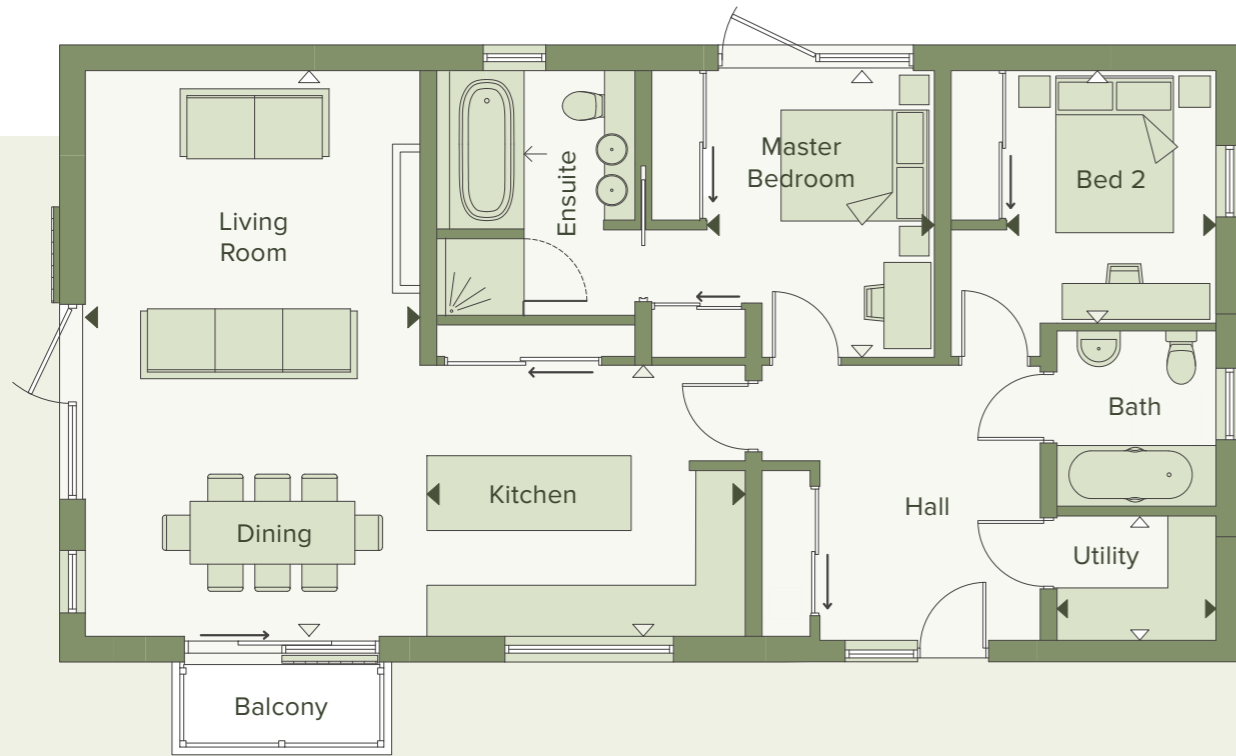
	4.25 x 7.2m 13'11 x 23'7	Ensuite
Living / Dining	4.07 x 3.45m 13'4 x 11'4	
Kitchen	2.01 x 1.56m 6'7 x 5'1	
Utility	2.90 x 3.65m 9'6 x 11'2	✓
Master Bedroom	2.67 x 3.22m 8'9 x 10'7	
Bedroom 2		
Total Floor Space	Home 6/8: 1144 ft²	
	Home 10: 1235 ft²	

G



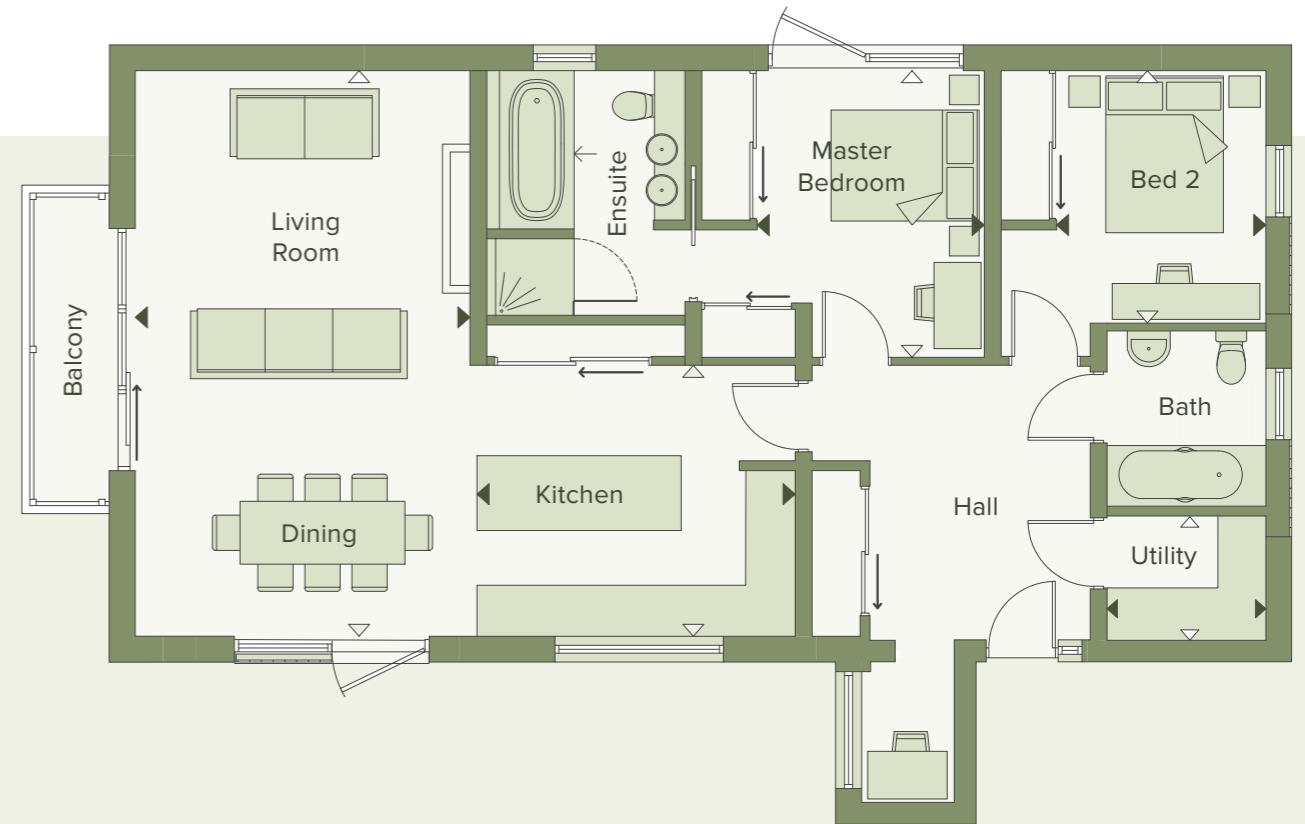
VIVIN HOME 6 GROUND FLOOR

1



VIVIN
HOME 8
FIRST FLOOR

2



VIVIN
HOME 10
SECOND FLOOR