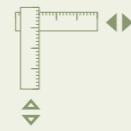




# MORISOT

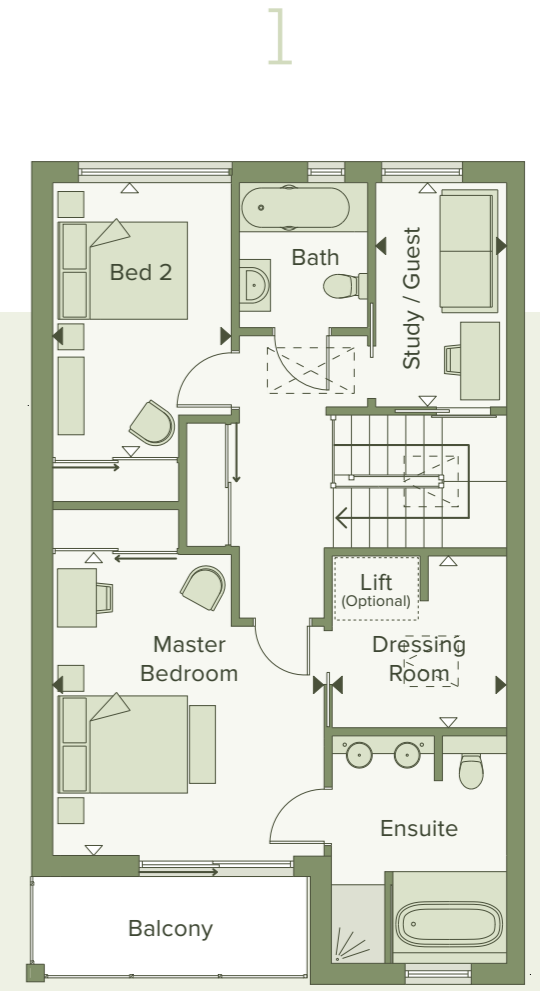
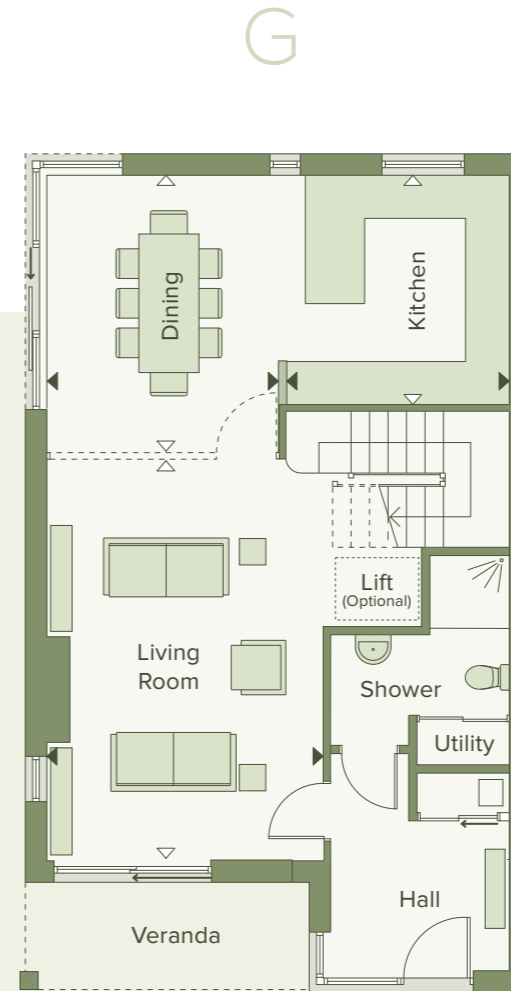
## 3 BED HOUSE | HOMES 1 TO 4

A striking selection of 3 bedroom homes featuring downstairs shower room, study or additional guest bedroom and the perfect open plan ground floor layout. The space is highly flexible with glazed bifold doors that can be closed to separate the living and dining areas when more intimate social spaces are required. The master bedroom has a private balcony, mirroring the veranda below, which is the ideal spot to catch the morning sun. The Morisot also allows for retro fitting of a two person lift.



	↔ x ↔	↕
Kitchen	3.48 x 3.37m 11'4 x 11'0	
Dining Area	3.52 x 4.19m 11'7 x 13'9	
Living Room	4.20 x 6.06m 13'9 x 19'11	
Master Bedroom	4.19 x 4.73m 13'9 x 15'6	✓
Bedroom 2	2.79 x 4.29m 9'2 x 14'1	
Study / Guest	2.02 x 3.48m 6'8 x 11'4	
Dressing Room	2.69 x 2.65m 8'10 x 8'8	
<b>Total Floor Space</b>	<b>1664 ft<sup>2</sup></b>	

↕ Ensuite



# HOMES 1 TO 4

MINOR VARIATIONS TO HOMES 2 & 3

↔ Homes 3 and 4 are handed