



Ventnor Avenue

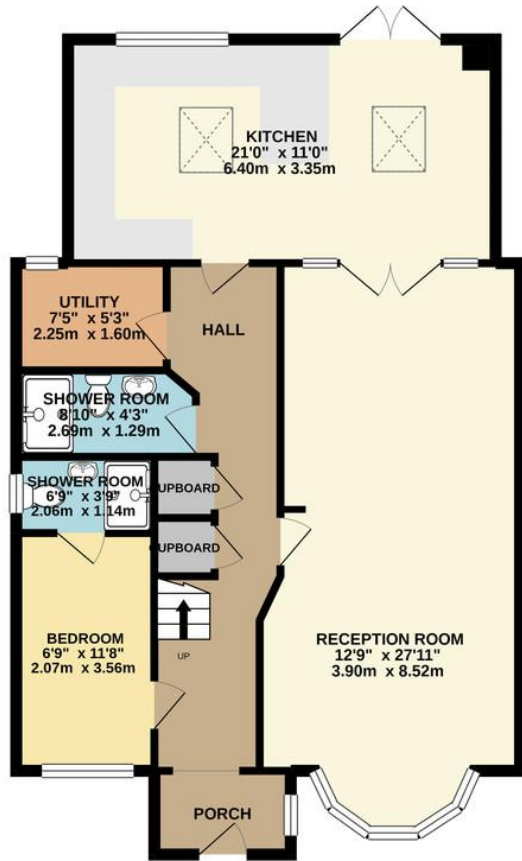
Stanmore, HA7 2HX

£799,950

A very well presented, chain free, 5 bedroom, 2 bathroom, 1 washroom semi-detached house providing deceptively spacious family accommodation with approx. 90' west facing rear garden. Located close to Belmont Circle for shops, bus stops, health centre, Whitchurch, Avanti, Stanburn and Park High Schools plus St. Josephs primary school and with the nearest station being Canons Park. EPC Rating: E



GROUND FLOOR
890 sq.ft. (82.7 sq.m.) approx.



1ST FLOOR
580 sq.ft. (53.9 sq.m.) approx.



EPC Rating: E

TOTAL FLOOR AREA : 1470 sq.ft. (136.6 sq.m.) approx.

Whilst every attempt has been made to ensure the accuracy of the floorplan contained here, measurements of doors, windows, rooms and any other items are approximate and no responsibility is taken for any error, omission or mis-statement. This plan is for illustrative purposes only and should be used as such by any prospective purchaser. The services, systems and appliances shown have not been tested and no guarantee as to their operability or efficiency can be given.
Made with Metrofix ©2022.

Belmont Circle Office
506 Kenton Lane
Harrow
Middlesex
HA3 8RD

www.blacklarsestateagents.co.uk
0208 907 7701
sales@blacklarsestates.co.uk

Agents Note: Whilst every care has been taken to prepare these particulars, they are for guidance purposes only. All measurements are approximate and for general guidance purposes only and whilst every care has been taken to ensure their accuracy, they should not be relied upon and potential buyers/tenants are advised to recheck the measurements