



Kinnerton Street, SW1X



## Kinnerton Street, SW1X

A 3 double bedroom mews house located on a quiet street on the border of Belgravia and Knightsbridge. This charming mews house requires updating with plenty of potential for an incoming purchaser.

Kinnerton Street is located just off Motcomb Street which has an abundance of restaurants, shops and boutiques.

The property consists of a generous ground floor reception room with kitchen adjoining. Two double bedrooms alongside a family bathroom on the first floor, and the master bedroom with en-suite, dressing area, study and terrace encapsulating the whole 2nd floor.



**3 Bedrooms - En Suite Shower Room-  
Bathroom - Reception Room - Kitchen - Study  
- Roof Terrace**

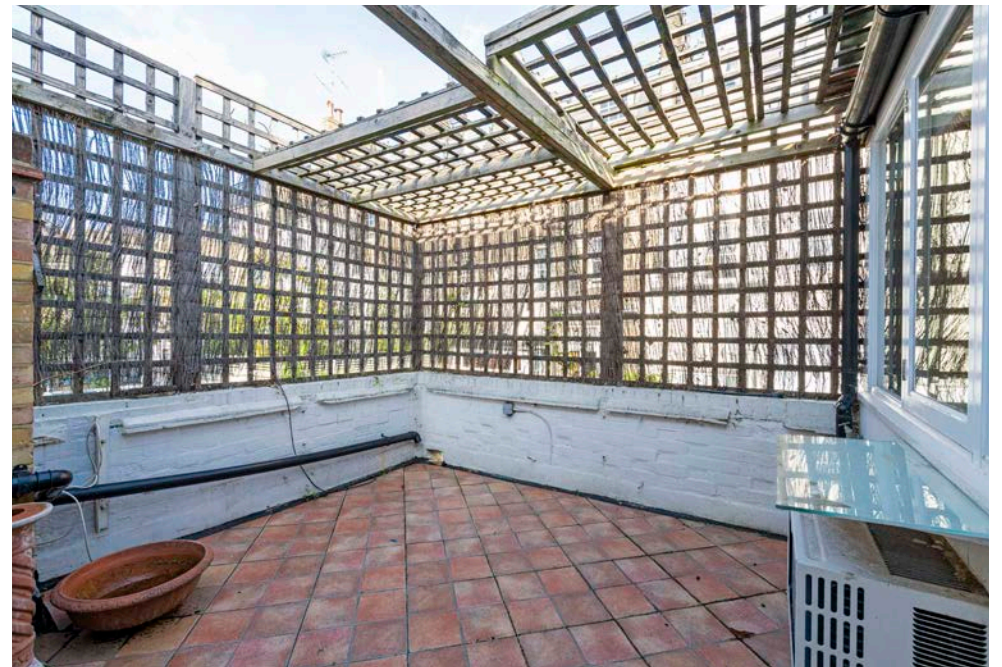


- Knightsbridge (Piccadilly Line) 0.3 miles
- Sloane Square (District & Circle Line) 0.5 miles
- Victoria mainline 0.8 miles
- Hyde Park 0.3 miles









Leasehold, approx. **119 years and 8 months**

unexpired as at October 2021

(127 year from 24th June 2014).

**£2,600,000**

Subject to Contract




**Wellbelove  
Quested**  
PROPERTY CONSULTANTS

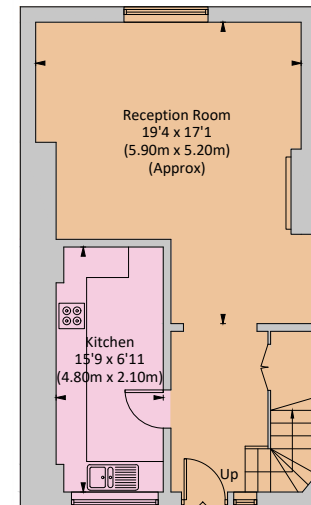
**020 7881 0880**  
160 Ebury Street  
(Corner of Eaton Terrace)  
Belgravia  
London SW1W 9JR  
[wellbelove-quested.com](http://wellbelove-quested.com)

## KINNERTON STREET, SW1

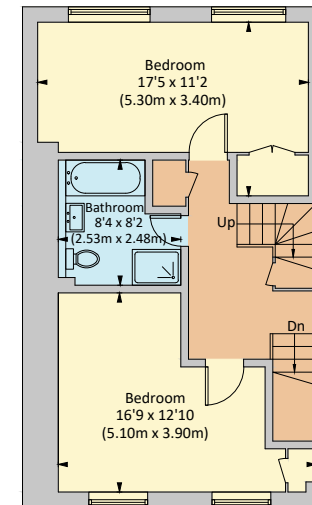
Total areas shown on plan 1573.3 Sq Ft. / 146.1 Sq M  
Approx. gross internal area 1473 Sq Ft. / 136.8 Sq M  
Approx. gross external area 100.3 Sq Ft. / 9.3 Sq M



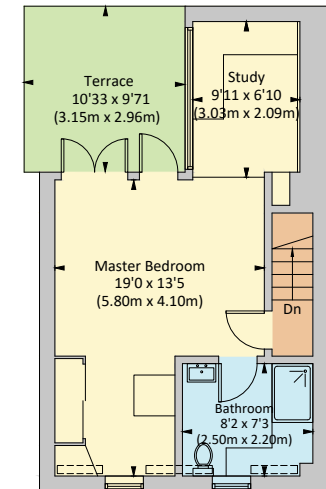
 = Reduced headroom below 1.5m / 5'0



**Ground Floor**  
(540 Sq Ft.)



**First Floor**  
(539 Sq Ft.)



**Second Floor**  
(394 Sq Ft.)

### Disclaimer

These particulars have been produced as a general guide for this property only and no other purpose. They are not an offer or contract. You should not rely on statements in these particulars or by word of mouth or in writing as being factually accurate about the property, its condition or its value. Neither any primary agent or joint agent has any authority to make or give any representations or warranties in relation to the property, and accordingly any information given is entirely without responsibility on the part of the agents or lessor(s).

The photographs show only certain parts of the property as they appeared at the time they were taken. Any areas, measurements and distances given are approximate only. Any reference to alterations to, or use of, any part of the property does not mean that any necessary planning, building regulations or other consent has been obtained nor have any services, equipment or facilities been tested. A lessee should satisfy themselves by inspection or otherwise. The VAT position relating to the property may change without notice. Please contact us for further information regarding the approved Client Money Protection (CMP) scheme and the property redress scheme which we are a member of.

Illustration for identification purposes only, measurements are approximate, not to scale. FloorplansUsketch.com © 2021 (ID804378)