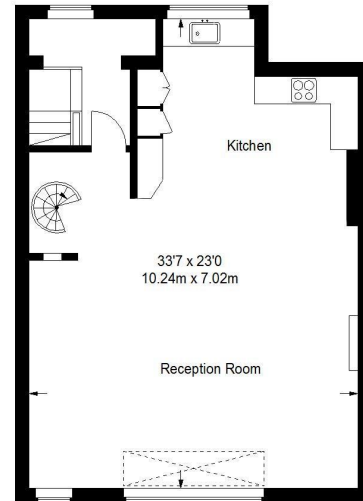
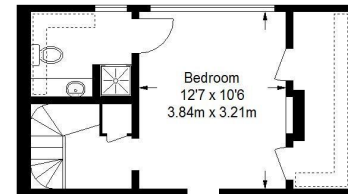


Talgarth Road

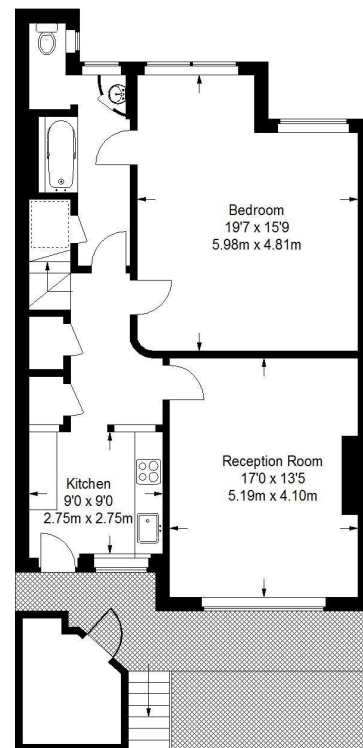
Approximate Gross Internal Area
(Excluding Reduced Headroom / Including Mezzanine)
2664 sq ft / 247.5 sq m
Store = 54 sq ft / 5 sq m
Reduced Headroom = 32 sq ft / 3 sq m
Total = 2750 sq ft / 255.5 sq m



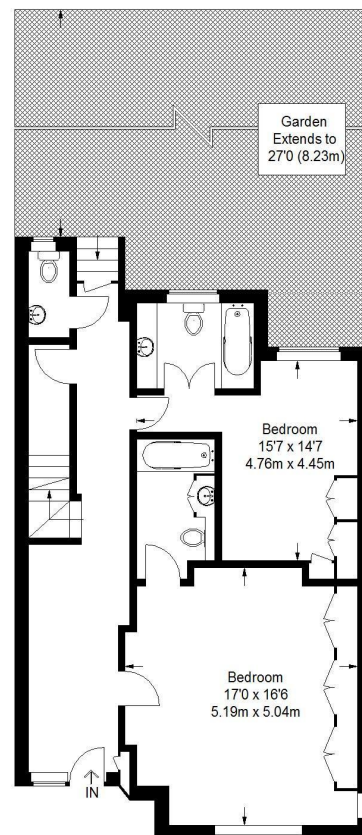
First Floor = 754 sq ft / 70.1 sq m




Mezzanine (Including Reduced Headroom)
288 sq ft / 26.8 sq m



Lower Ground Floor (Including Reduced Headroom)
827 sq ft / 76.8 sq m



Raised Ground Floor = 827 sq ft / 76.8 sq m

 = Reduced headroom below 1.5 m / 5'0"

Not to scale, for guidance only and must not be relied upon as a statement of fact.
All measurements and areas are approximate only and have been prepared in accordance with the current edition of the RICS Code of Measuring Practice.



West Kensington - 0207 381 0319

203C North End Road, West Kensington, W14 9NL

St Paul's Studios, Talgarth Road, W14

A unique opportunity to acquire this extremely rare and magnificent Grade II Listed artists studio built in the 1890s. Formerly belonging to the nations prima Ballerina Dame Margot Fonteyn, this property is in a need of complete renovation yet still has a huge amount of period charm and therefore, it is an amazing opportunity for someone looking to create their dream home. The accommodation is arranged over three levels currently offering four large double bedrooms, two bathrooms, a large artist studio/reception north-facing double-storey windows, an extra maisonette/office area and south-facing garden. Designed by Frederick Wheeler in 1891, St Pauls Studios are a very rare and striking terrace of artists studios with housekeeper apartments in the basement situated just moments from Barons Court Underground Station (Piccadilly and District lines), and is within easy reach of Queens Tennis Club and Kensington High Street.

Asking Price: £1,400,000 (Freehold)

For a full EPC Certificate please visit: <https://www.epcregister.com/searchReport.html> and quote report reference number:

These particulars have been prepared in good faith as a general guide as instructed by our clients. We have not carried out a detailed survey nor tested the services, appliances and specific fittings. Room sizes are approximate and are generally taken as maximum measurements and should not be relied on for fitting of carpets or furnishings. Formal notice is also given that all contents, carpeting, curtains, blinds and appliances are deemed removable by our client unless specifically included within these particulars. All properties are offered subject to contract.

www.featherstoneleigh.co.uk

