

**£950 pcm**

**Wells Close, Rugeley, WS15 1GG**

**Bedrooms : 3**

**Bathrooms : 3**

**Reception Rooms : 2**

**Southwells**

5 Horsefair, Rugeley, Staffs WS15 2EJ

southwellssales@gmail.com | 01889582137

Website: <https://www.southwellsproperties.co.uk/>

 **SOUTHWELLS**  
SALES & LETTINGS

Southwells are proud to bring to the rental market this beautifully presented 3 bedroom detached house set on the outskirts of the town of Rugeley and the surrounding Cannock Chase. The property has Gas central heating and double glazing along with a drive way and integral garage and the following brief accommodations.

### **Front**

Driveway with ample parking

### **Ground floor**

Entrance hall

Lounge

Dining room

Downstairs guest toilet

Integral garage

### **1st floor**

Master bedroom with ensuite

2 further bedrooms

Family bathroom

### **Rear**

Enclosed reargarden

RENT: £950 pcm PAYABLE MONTHLY IN ADVANCE

DEPOSIT: £1,096 payable monthly in advance to be held against any loss or other breach of the terms of the tenancy. To be held by The Deposit Protection Service.

Viewings available immediately

For further enquiries please call:- 01889582137 Email: southwellssales@gmail.com

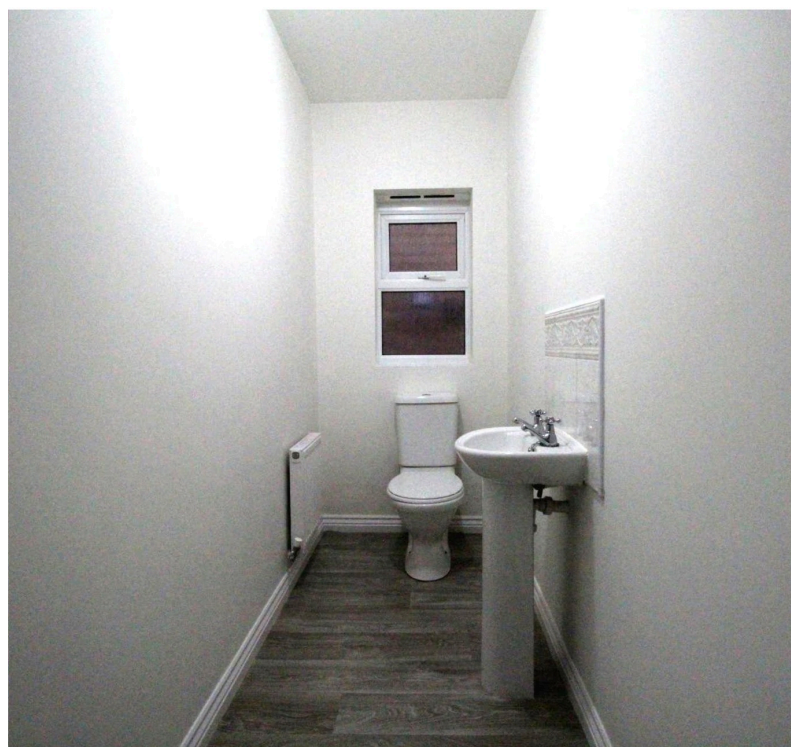
### **Southwells**

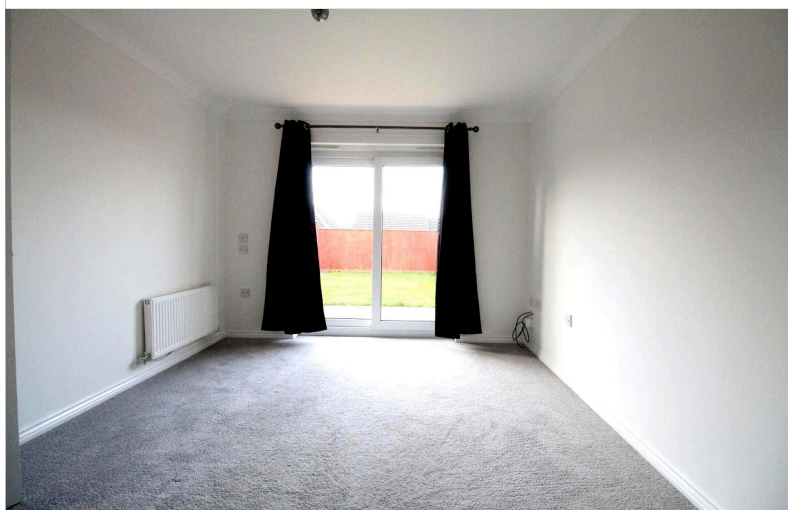
5 Horsefair, Rugeley, Staffs WS15 2EJ

southwellssales@gmail.com | 01889582137

Website: <https://www.southwellsproperties.co.uk/>







**Southwells**  
5 Horsefair, Rugeley, Staffs WS15 2EJ  
southwellssales@gmail.com | 01889582137  
Website: <https://www.southwellsproperties.co.uk/>





# Energy performance certificate (EPC)

8 Wells Close Rugeley WS15 1GG	Energy rating <b>C</b>	Valid until: <b>9 April 2031</b>
		Certificate number: <b>0439-0924-6000-0020-1292</b>

## Property type

Detached house

## Total floor area

86 square metres

## Rules on letting this property

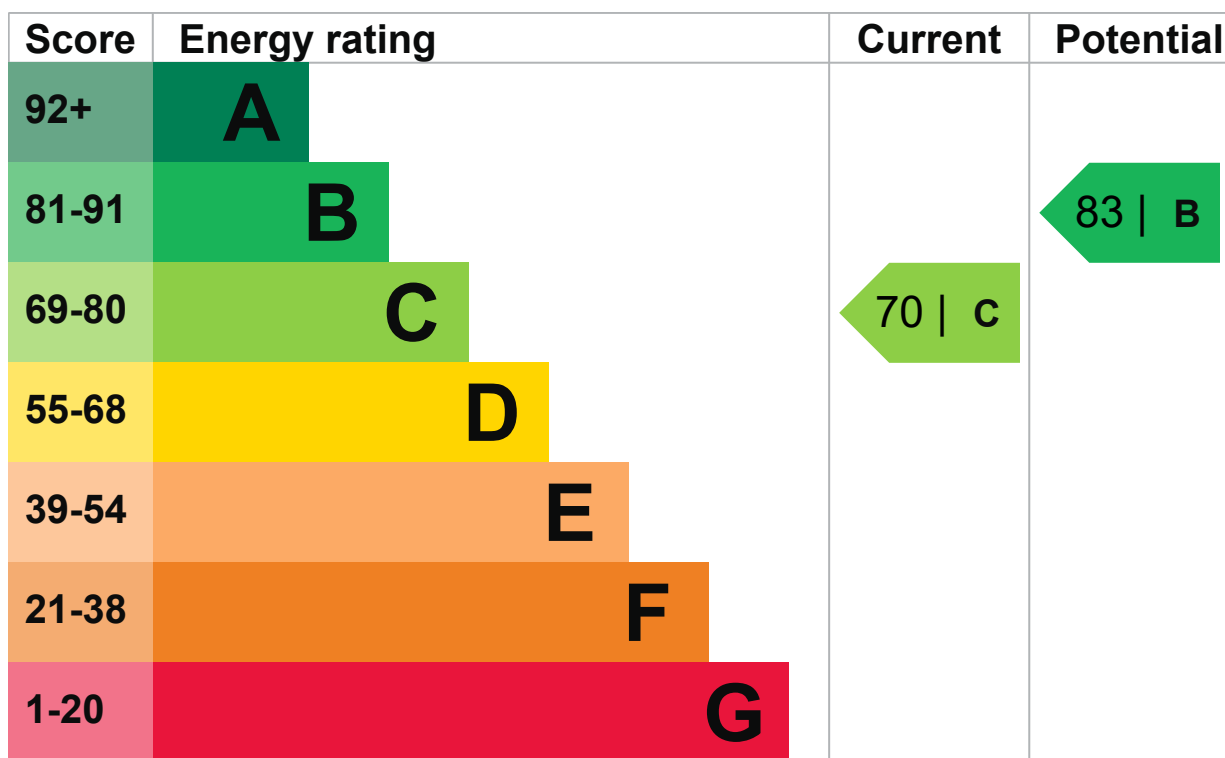
Properties can be rented if they have an energy rating from A to E.

If the property is rated F or G, it cannot be let, unless an exemption has been registered. You can read [guidance for landlords on the regulations and exemptions](https://www.gov.uk/guidance/domestic-private-rented-property-minimum-energy-efficiency-standard-landlord-guidance) (<https://www.gov.uk/guidance/domestic-private-rented-property-minimum-energy-efficiency-standard-landlord-guidance>).

## Energy efficiency rating for this property

This property's current energy rating is C. It has the potential to be B.

[See how to improve this property's energy performance.](#)



The graph shows this property's current and potential energy efficiency.

Properties are given a rating from A (most efficient) to G (least efficient).

Properties are also given a score. The higher the number the lower your fuel bills are likely to be.

For properties in England and Wales:

- the average energy rating is D
- the average energy score is 60

### Breakdown of property's energy performance

This section shows the energy performance for features of this property. The assessment does not consider the condition of a feature and how well it is working.

Each feature is assessed as one of the following:

- very good (most efficient)
- good
- average
- poor
- very poor (least efficient)

When the description says "assumed", it means that the feature could not be inspected and an assumption has been made based on the property's age and type.

Feature	Description	Rating
Wall	Cavity wall, as built, insulated (assumed)	Good
Roof	Pitched, 200 mm loft insulation	Good
Window	Fully double glazed	Average

Feature	Description	Rating
Main heating	Boiler and radiators, mains gas	Good
Main heating control	Programmer, room thermostat and TRVs	Good
Hot water	From main system	Good
Lighting	Low energy lighting in all fixed outlets	Very good
Floor	Suspended, limited insulation (assumed)	N/A
Secondary heating	None	N/A

## Primary energy use

The primary energy use for this property per year is 211 kilowatt hours per square metre (kWh/m<sup>2</sup>).

► [What is primary energy use?](#)

### Environmental impact of this property

This property's current environmental impact rating is D. It has the potential to be C.

Properties are rated in a scale from A to G based on how much carbon dioxide (CO<sub>2</sub>) they produce.

Properties with an A rating produce less CO<sub>2</sub> than G rated properties.

### An average household produces

6 tonnes of CO<sub>2</sub>

### This property produces

3.2 tonnes of CO<sub>2</sub>

### This property's potential production

1.9 tonnes of CO<sub>2</sub>

By making the [recommended changes](#), you could reduce this property's CO<sub>2</sub> emissions by 1.3 tonnes per year. This will help to protect the environment.

Environmental impact ratings are based on assumptions about average occupancy and energy use. They may not reflect how energy is consumed by the people living at the property.



## How to improve this property's energy performance

Making any of the recommended changes will improve this property's energy efficiency.

If you make all of the recommended changes, this will improve the property's energy rating and score from C (70) to B (83).

► [What is an energy rating?](#)



### Recommendation 1: Floor insulation (suspended floor)

Floor insulation (suspended floor)

#### Typical installation cost

£800 - £1,200

#### Typical yearly saving

£24

#### Potential rating after carrying out recommendation 1

71 | C

### Recommendation 2: Solar water heating

Solar water heating

#### Typical installation cost

£4,000 - £6,000

#### Typical yearly saving

£32

#### Potential rating after carrying out recommendations 1 and 2

73 | C

### Recommendation 3: Solar photovoltaic panels, 2.5 kWp

Solar photovoltaic panels

#### Typical installation cost

£3,500 - £5,500

## Typical yearly saving

£332

---

## Potential rating after carrying out recommendations 1 to 3

83 | B

---

## Paying for energy improvements

[Find energy grants and ways to save energy in your home.](https://www.gov.uk/improve-energy-efficiency) (https://www.gov.uk/improve-energy-efficiency).

### Estimated energy use and potential savings

## Estimated yearly energy cost for this property

£717

---

## Potential saving

£56

---

The estimated cost shows how much the average household would spend in this property for heating, lighting and hot water. It is not based on how energy is used by the people living at the property.

The estimated saving is based on making all of the recommendations in [how to improve this property's energy performance](#).

For advice on how to reduce your energy bills visit [Simple Energy Advice](https://www.simpleenergyadvice.org.uk/) (https://www.simpleenergyadvice.org.uk/).

## Heating use in this property

Heating a property usually makes up the majority of energy costs.

## Estimated energy used to heat this property

### Space heating

9011 kWh per year

---

### Water heating

2157 kWh per year

---

## Potential energy savings by installing insulation

The assessor did not find any opportunities to save energy by installing insulation in this property.

You might be able to receive [Renewable Heat Incentive payments](https://www.gov.uk/domestic-renewable-heat-incentive) (https://www.gov.uk/domestic-renewable-heat-incentive). This will help to reduce carbon emissions by replacing your existing heating system with one that generates renewable heat. The estimated energy required for space and water heating will form the basis of the payments.

## Contacting the assessor and accreditation scheme

This EPC was created by a qualified energy assessor.

If you are unhappy about your property's energy assessment or certificate, you can complain to the assessor directly.

If you are still unhappy after contacting the assessor, you should contact the assessor's accreditation scheme.

Accreditation schemes are appointed by the government to ensure that assessors are qualified to carry out EPC assessments.

## Assessor contact details

### Assessor's name

Waleed Ghauri

---

### Telephone

07747546870

---

### Email

[waleedghauri@yahoo.com](mailto:waleedghauri@yahoo.com)

---

## Accreditation scheme contact details

### Accreditation scheme

Elmhurst Energy Systems Ltd

---

### Assessor ID

EES/021999

---

### Telephone

01455 883 250

---

### Email

[enquiries@elmhurstenergy.co.uk](mailto:enquiries@elmhurstenergy.co.uk)

---

## Assessment details

### Assessor's declaration

No related party

---

### Date of assessment

10 April 2021

---

## Date of certificate

10 April 2021

---

## Type of assessment

▶ [RdSAP](#)

---

## Other certificates for this property

If you are aware of previous certificates for this property and they are not listed here, please contact us at [mhclg.digital-services@communities.gov.uk](mailto:mhclg.digital-services@communities.gov.uk) or call our helpdesk on 020 3829 0748.

There are no related certificates for this property.