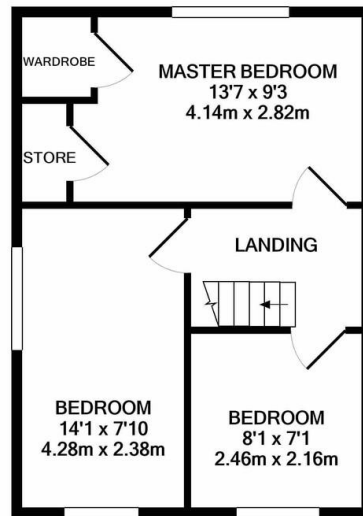
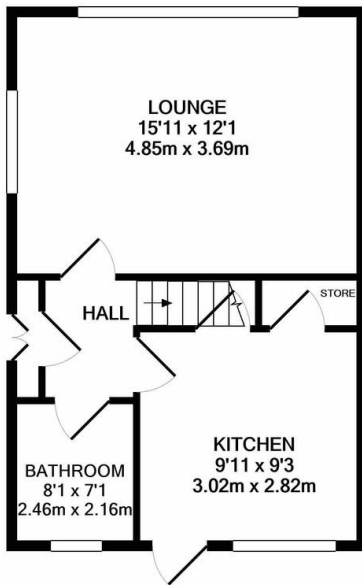




Property Summary

Three bedroom semi-detached property for sale on Kenilworth Road, South Wigston. The property comprises entrance hall, kitchen, living room and bathroom on ground floor together with three bedrooms upstairs. The property also benefits from driveway, garage and gardens to the front and back.



FLOORPLAN BY PHILLIPS GEORGE ESTATE AGENT
TOTAL APPROX. FLOOR AREA 756 SQ.FT. (70.3 SQ.M.)

Whilst every attempt has been made to ensure the accuracy of the floor plan contained here, measurements of doors, windows, rooms and any other items are approximate and no responsibility is taken for any error, omission, or mis-statement. This plan is for illustrative purposes only and should be used as such by any prospective purchaser. The services, systems and appliances shown have not been tested and no guarantee as to their operability or efficiency can be given
Made with Metropix ©2022

Energy Efficiency Rating		Current	Potential
Very energy efficient - lower running costs			
(92+)	A		
(81-91)	B		87
(69-80)	C		
(55-68)	D		
(39-54)	E	49	
(21-38)	F		
(1-20)	G		
Not energy efficient - higher running costs			
England & Wales		EU Directive 2002/91/EC	
WWW.EPC4U.COM			

- Semi Detached Home
- Large Living Room
- Three Bedrooms Upstairs
- Bathroom Downstairs
- Well Proportioned Kitchen
- Gardens to Front & Back
- Driveway
- Garage

phillips george | sales & lettings

Agents Note: Whilst every care has been taken to prepare these sales particulars, they are for guidance purposes only. All measurements are approximate and for general guidance purposes only and whilst every care has been taken to ensure their accuracy, they should not be relied upon and potential buyers are advised to recheck the measurements

46 Long Street, Wigston, Leicestershire, LE18 2AH

info@phillipsgeorge.co.uk

0116 216 8178

