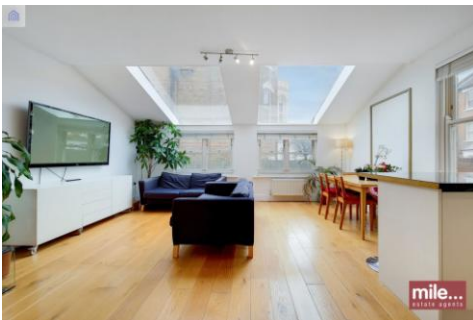




MILE



Maygrove Road, West Hampstead, London £2,250 pcm

Mile are delighted to bring to market this amazing ground floor apartment in NW6.

Set on the ground floor of this remarkable double fronted Victorian building, this stunning flat boasts two double bedrooms (one the full span of the building with bay windows), a three piece bathroom, and a show stopping 19ft open plan kitchen living area flooded with natural light.


Offered in excellent condition and full of character, this great home benefits from wood flooring and carpet throughout, double glazed windows, high ceilings and an abundance of storage space and natural light.

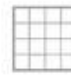
- Ground floor apartment
- Two double bedroom
- Excellent condition
- Incredible open plan kitchen living
- Quiet residential road
- Available March 2024
- Bright and airy
- Great location
- Short walk to open green space of Kilburn Grange Park
- Close to shops and transport



— Ground Floor

 GROSS INTERNAL AREA (GIA)
The footprint of the property
72.09 sqm / 775.97 sqft

 NET INTERNAL AREA (NIA)
Excludes walls and external features
Includes washrooms, restricted head height
68.87 sqm / 741.31 sqft

 EXTERNAL STRUCTURAL FEATURES
Balconies, terraces, verandas etc.
0.00 sqm / 0.00 sqft

 RESTRICTED HEAD HEIGHT
Limited use area under 1.5 m
0.00 sqm / 0.00 sqft