

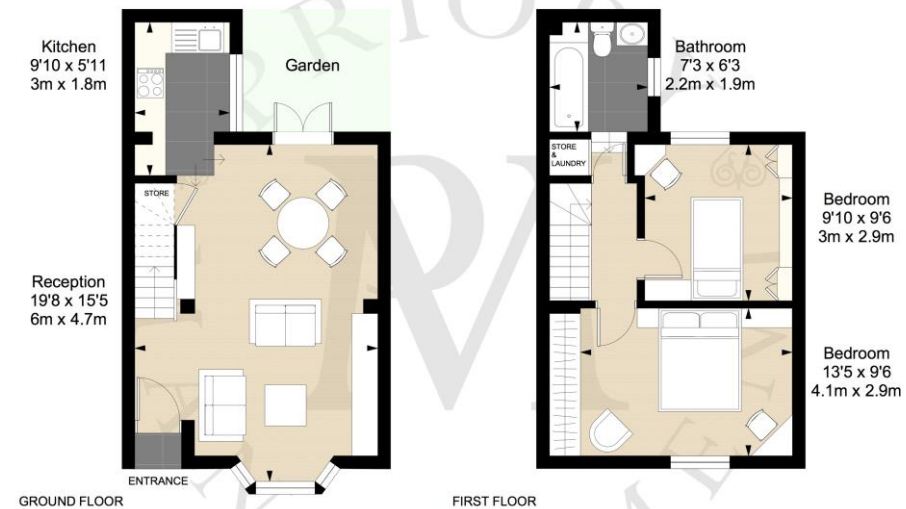


- End of Terrace Cottage
- 2 Double Bedrooms
- Direct access to Riverside
- Patio Garden

10 Watcombe Cottages, Kew, TW9

£850,000

Delightful 2-bedroom end of terraced cottage situated on a no through road nestled between Kew Green and the River Thames, with a direct pedestrian path to the riverside. Presented in very good order, the property features an open plan ground floor reception room with a modern kitchen which opens onto a walled patio garden. The first floor comprises two double bedrooms and a family bathroom and benefits from first floor wonderful views towards the River Thames. Conveniently located moments from many of the immediate attractions such as The Royal Botanical Gardens, and within walking distance to Kew Bridge mainline station and Kew Gardens underground station for an easy commute into London.



WATCOMBE COTTAGES, KEW, RICHMOND, TW9 3BD

Total approx. floor area 688 sq.ft (64 sq.m)

Disclaimer: Floor plan measurements are approximate and are for illustrative purposes only.



16 Kew Green, Richmond,
Surrey, TW9 3BH

www.priorymanagement.co.uk
0208 940 4555
lettings@priorylm.com

Agents Note: Whilst every care has been taken to prepare these sales particulars, they are for guidance purposes only. All measurements are approximate and are for general guidance purposes only and whilst every care has been taken to ensure their accuracy, they should not be relied upon and potential buyers are advised to recheck the measurements