



38 Grasmere Road

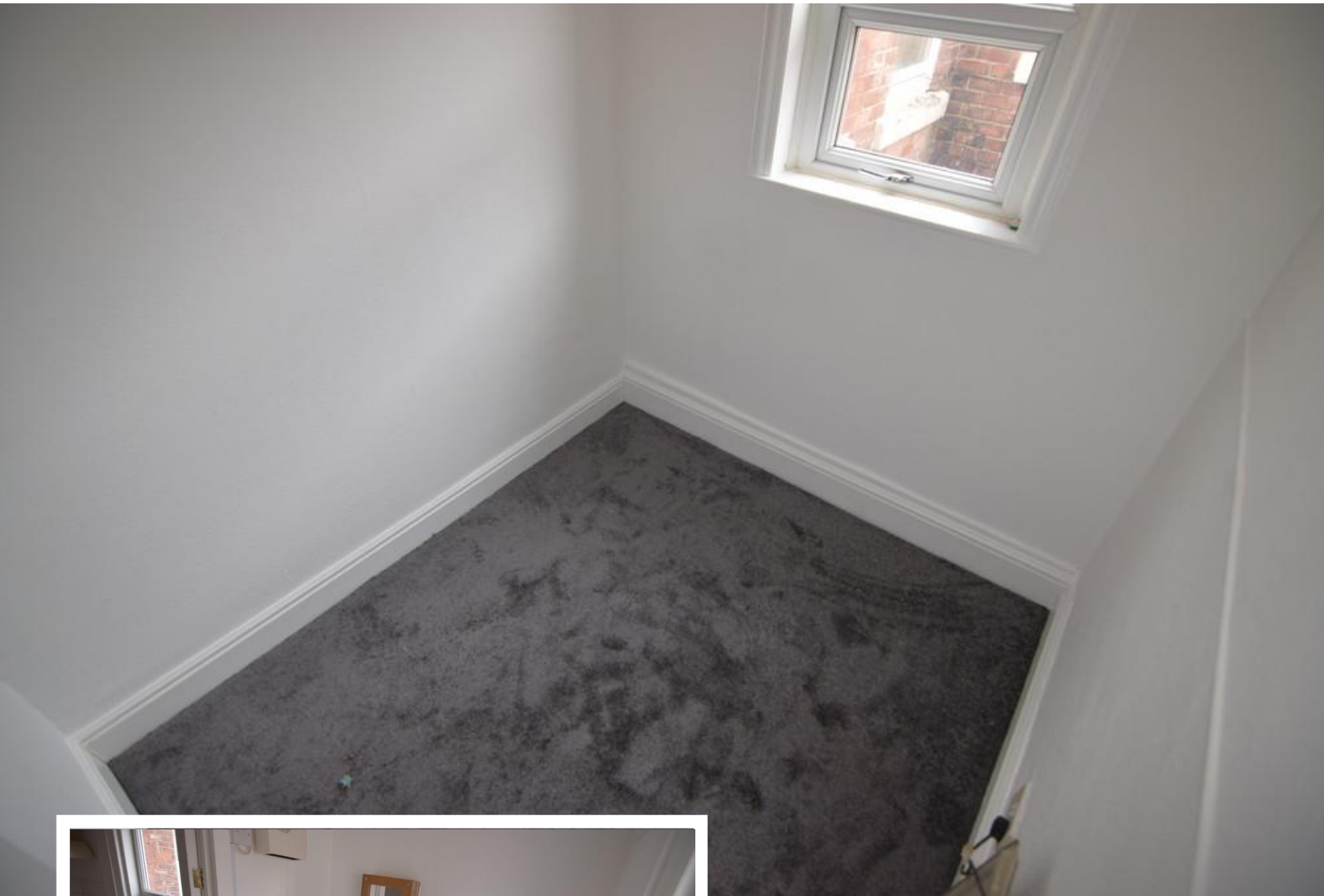
Blackpool, FY1 5HT

- **One bedroom apartment**
- **First floor position**
- **Electric heating**
- **Double glazing**

£395 pcm

EPC Rating '70'





Property Description

ONE BEDROOM FIRST FLOOR SELF CONTAINED APARTMENT, IDEAL FOR A SINGLE OCCUPANT THE PRPOERTY BRIEFLY COMPRISES ENTRANCE HALL, LOUNGE / KITCHEN, SHOWER ROOM, SEPARATE WC AND SINGLE BEDROOM. THE PROPERTY BOASTS ELECTRIC HEATING AND DOUBLE GLAZING AND IS SITUATED CLOSE TO LOCAL SHOPS AND AMENITIES.

LOUNGE - KITCHEN

6' 07" x 6' 98" (2.01m x 4.32m) LOUNGE / KITCHEN - WITH FITTED UNITS, ELECTRIC OVEN AND ELECTRIC HOB

BEDROOM

6' 07" x 6' 98" (2.01m x 4.32m) BEDROOM WITH ELECTRIC HEATER, UPVC WINDOW

SHOWER + WASH HAND BASIN

7' 14" x 4' 35" (2.49m x 2.11m) SHOWER ROOM WITH SHOWER CUBICLE AND ELECTRIC SHOWER,

WASH HAND BASIN

WC

SEPARATE WC

%epcGraph_c_1_325%

21 Counce Street
Blackpool
Lancashire
FY1 3LA

www.moveholmes.co.uk
01253 928200
enquiries@moveholmes.co.uk

Agents Note: Whilst every care has been taken to prepare these sales particulars, they are for guidance purposes only. All measurements are approximate are for general guidance purposes only and whilst every care has been taken to ensure their accuracy, they should not be relied upon and potential buyers are advised to recheck the measurements