



132 Roman Way

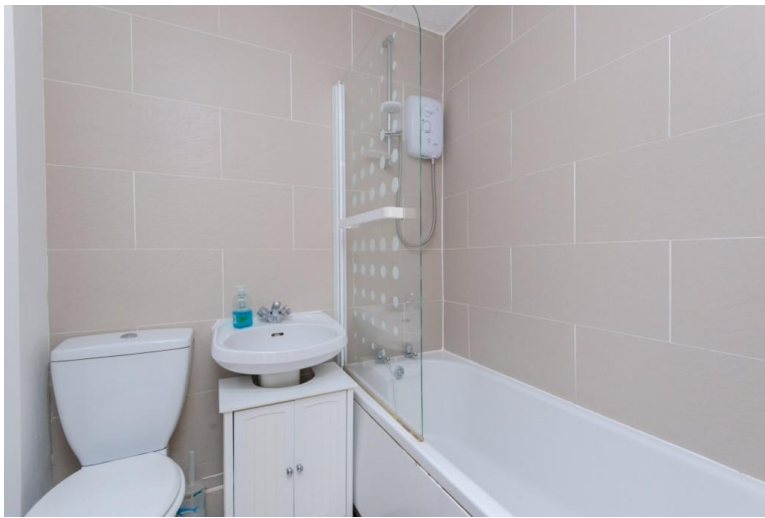
Bicester,

£1,100 pcm - Available 19th March 2022

EPC Rating '73'

- Two double bedrooms
- Unfurnished
- Gas CH
- Rear garden





Property Description

Situated in this no through road only a few minutes walk from the town centre shops and Bicester North station, this mid terrace two double bedroom house is in good condition and available unfurnished. Very convenient for access to Bicester Village and only a short drive to Junction 9 of the M40. Two double bedrooms, Bathroom with shower over, Living/Dining room with door to rear garden, Fully fitted Kitchen with cooker, Gas central heating, Attractive low maintenance rear garden, Two allocated spaces and off street parking.





%epcGraph_c_1_325%

Agents Note: Whilst every care has been taken to prepare these particulars, they are for guidance purposes only. All measurements are approximate and for general guidance purposes only and whilst every care has been taken to ensure their accuracy, they should not be relied upon and potential buyers/tenants are advised to recheck the measurements

Holyfield House, 1 Walton Well Road, Oxford, OX2 6ED
 T: 01865 515900 E: info@tmlettings.co.uk

www.tmlettings.co.uk