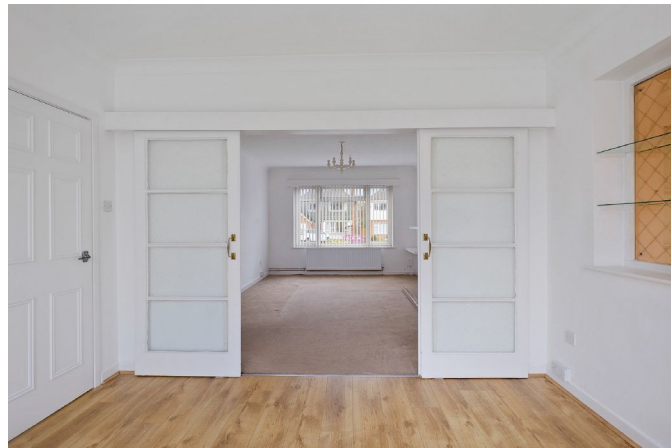




30 Braemar Road
Sutton Coldfield
West Midlands
B73 6LN

Asking Price of **£499,950**



Asking Price of **£499,950**

30 Braemar Road

Sutton Coldfield

West Midlands

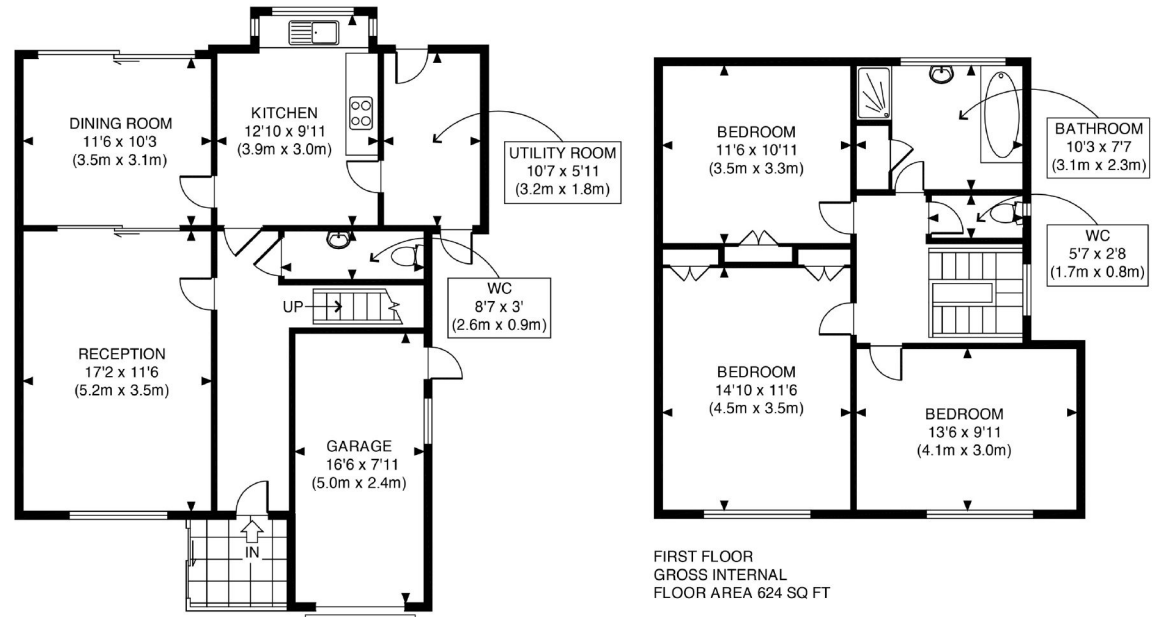
B73 6LN

EPC Rating D

Council Tax Band E



Agents Note: Whilst every care has been taken to prepare these sales particulars, they are for guidance purposes only. All measurements are approximate and are for general guidance purposes only and whilst every care has been taken to ensure their accuracy, they should not be relied upon and potential buyers are advised to recheck the measurements



APPROX. GROSS INTERNAL FLOOR AREA 1399 SQ FT / 130 SQ M
Ref: CB - 280222
Copyright **photoplan**

Disclaimer: Floor plan measurements are approximate and are for illustrative purposes only. While we do not doubt the floor plan accuracy and completeness, you or your advisors should conduct a careful, independent investigation of the property in respect of monetary valuation

Head Office

32-33 Bradford Street, Walsall, West Midlands, WS1 3QA

Contact Us

www.wadsworthco.com
info@wadsworthandco.com
01922 627121

Opening Hours

Mon-Fri: 8.30am - 6pm
Sat-Sun: 10am - 2.30pm