



Fockbury Road

DODFORD

£500,000



Three Bedroom Semi-Detached House

Features.

- THREE BEDROOMS
- RE-FITTED KITCHEN/DINER AND SEPARATE UTILITY ROOM
- LOUNGE WITH LOG BURNER
- SNUG
- HALL WITH OAK AND GLASS BALUSTRADE STAIRCASE
- FAMILY BATHROOM AND DOWNSTAIRS WC
- FRONT, SIDE AND REAR GARDENS
- GATED DRIVEWAY PROVIDING OFF ROAD PARKING
- FAR REACHING COUNTRY VIEWS

Description.

A characterful and beautifully presented three bedroom semi-detached house, offered with a re-fitted kitchen, lounge and snug with fireplaces, landscaped side garden, rear garden enjoying country views and gated off road parking to the front, situated in the sought-after semi-rural village of Dodford, Bromsgrove.

The property is approached via a gated driveway providing off road parking.

An oak and glass porch leads directly into the hallway with a storage cupboard and oak-braced doors off to; a downstairs wc; the lounge with a feature fireplace housing a log burner, window to the front aspect and French doors to the rear garden; snug with a fireplace and French doors to the rear garden; re-fitted kitchen; and a handy utility room.

An oak staircase with a glass balustrade leads up to the first floor landing with oak-braced doors radiating off to; the master bedroom; double bedroom three; bedroom three; and the family bathroom with a shower situated over the bath.

Outside, the property enjoys front, side and rear gardens. The side garden has been recently landscaped and benefits from having a lawn, decking area and paved patio, while the rear garden boasts a lawn and paved patio with low rise fencing allowing country views across a paddock and neighbouring fields.

Fockbury Road is a quiet road situated in the semi-rural village of Dodford within Bromsgrove, within close proximity to Dodford First School and benefitting from easy access to the motorway network.



Room Dimensions.

Bromsgrove itself offers a range of shopping, restaurant, entertainment and leisure facilities and in addition boasts home to the prestigious Bromsgrove School.

Room Dimensions:

Lounge: 21' 11" x 10' 4" (6.70m x 3.17m) max

Snug: 12' 4" x 9' 11" (3.78m x 3.03m)

Kitchen/Diner: 19' 0" x 9' 3" (5.80m x 2.83m)

Utility Room: 9' 3" x 5' 1" (2.82m x 1.57m)

Stairs To First Floor Landing

Master Bedroom: 15' 8" x 10' 4" (4.80m x 3.16m)

Bedroom Two: 13' 7" x 9' 3" (4.15m x 2.82m)

Bedroom Three: 9' 5" x 5' 6" (2.88m x 1.70m)

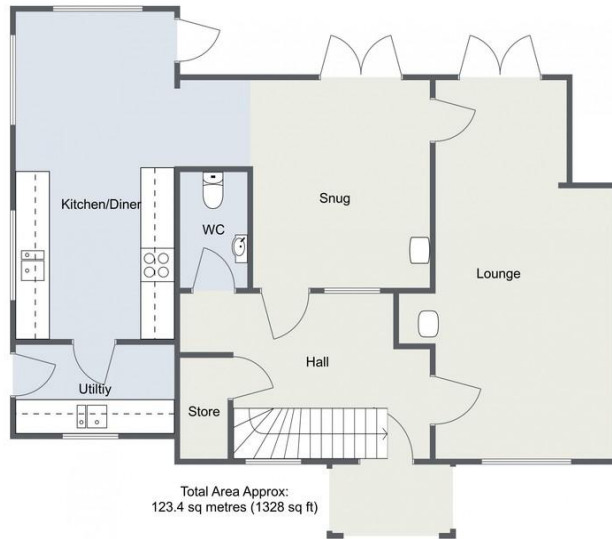
Bathroom: 9' 5" x 8' 5" (2.88m x 2.57m)



Fockbury Road, Dodford
First Floor



Ground Floor



Total Area Approx:
123.4 sq metres (1328 sq ft)

For illustrative purposes only. Decorative finishes, fixtures & fittings do not represent the current state of the property. Measurements are approximate & not to scale. Floor Plans made using RoomSketcher.

Please read the following: These particulars are for general guidance only and are based on information supplied and approved by the seller. Complete accuracy cannot be guaranteed and may be subject to errors and/or omissions. They do not constitute a contract or part of a contract in any way. We are not surveyors or conveyancing experts therefore we cannot and do not comment on the condition, issues relating to title or other legal issues that may affect this property. Interested parties should employ their own professionals to make enquiries before carrying out any transactional decisions. Photographs are provided for illustrative purposes only and the items shown in these are not necessarily included in the sale, unless specifically stated. The mention of any fixtures, fittings and/or appliances does not imply that they are in full efficient working order and they have not been tested. All dimensions are approximate. We are not liable for any loss arising from the use of these details.

EPC: D

COUNCIL TAX BAND: B

TENURE: Freehold

For more information on this house or to arrange a viewing please call the Bromsgrove office on:

01527 872 479

Alternatively, you can scan below to view all of the details of this property online.



14 Old Birmingham Road
Lickey End
Bromsgrove
B60 1DE