

ZENKO

Properties



£1,450 PCM

- TWO BEDROOM APARTMENT
- TWO BATHROOMS
- LARGER THAN AVERAGE
- BALCONY
- TANDEM PARKING FOR 2 CARS
- 11TH FLOOR
- RIVER VIEWS
- 1055 SQ FT

Neptune Street , Leeds, LS9 8AF

**** MUCH LARGER THAN AVERAGE ** TWO BEDROOMS ** TWO BATHROOMS ** TANDEM PARKING FOR TWO VEHICLES ****



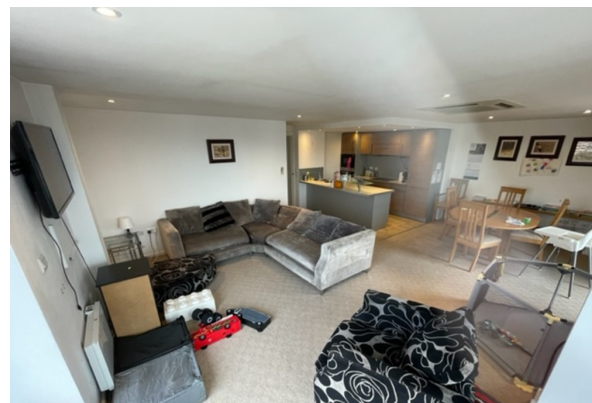
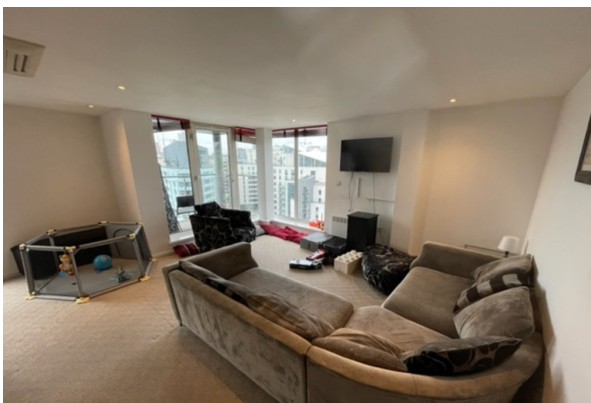
A two bedroom and two bathroom apartment located on 11th floor of Trinity One; a development of 111 bespoke apartments. This spacious, 11th floor apartment covers approximately 1055 square feet and briefly comprises of a large open plan living, kitchen and dining area with floor to ceiling corner glazing and balcony with views of the surrounding city & river. Both bedrooms are of exceptional size with the master having ample space for a King size bed and access to the luxurious ensuite with walk in shower. The kitchen is well equipped with high quality appliances including full size fridge freezer and dishwasher. There is a west facing balcony off the living area with fantastic city and river views.

The property also benefits from allocated underground tandem parking for two vehicles.

AVAILABLE 2ND DECEMBER

Council Tax Band - E

EPC Rating - C



2 The Chandlers, Leeds, West
Yorkshire, LS2 7EZ

www.zenkoproperties.co.uk
0113 247 0777
sales@zenkoproperties.co.uk

Agents Note: Whilst every care has been taken to prepare these sales particulars, they are for guidance purposes only. All measurements are approximate are for general guidance purposes only and whilst every care has been taken to ensure their accuracy, they should not be relied upon and potential buyers are advised to recheck the measurements