



Marshall Street, Soho, W1F
£425 pw

> Studio > 1 Bathroom > Unfurnished

TAVISTOCKBOW
RESIDENTIAL



- › Studio apartment
- › First floor
- › Separate kitchen
- › Original Features (fireplace & shutters)
- › High ceilings
- › Unfurnished
- › Situated in the Newburgh Quarter of Carnaby
- › Wood floors throughout
- › Available mid June
- › Close to Oxford Circus tube

Situated on the first floor of a period building in the heart of Carnaby this studio apartment features high ceilings and period features including original shutters on the windows and a lovely fireplace, there is a separate kitchen to the rear of the property. Available mid June on an unfurnished basis.

Council tax band D.





WHAT WE LOVE:

The location - in the heart of Carnaby Moments from Kingly Court and all its fantastic restaurants
The period features - original shutters on the windows
Minutes from Berwick Street food market
Moments from tranquil Golden Square.

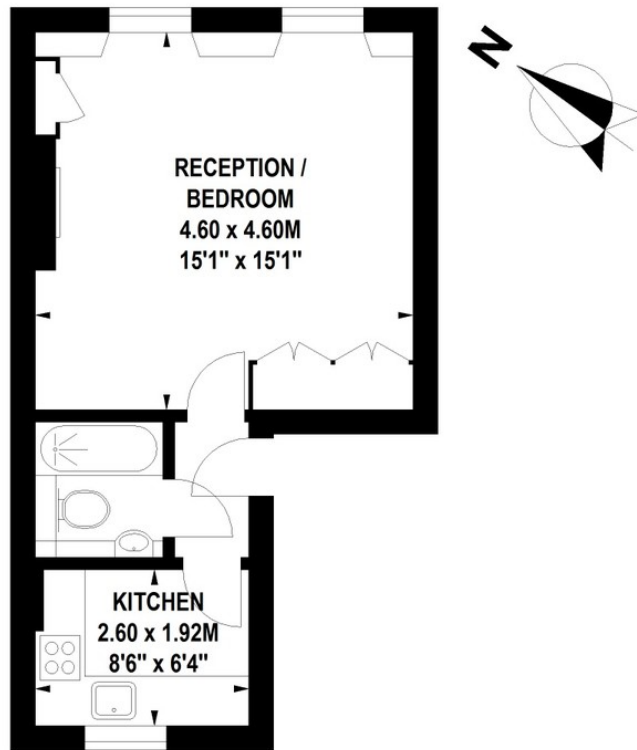
WHAT YOU NEED TO KNOW:

First floor
Retail shop below
Separate kitchen
Wood Floors
Available mid June.



Marshall Street, W1

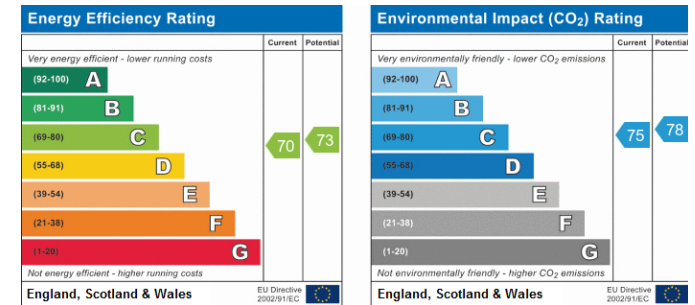
Approximate Gross Internal Area 31 sq m / 334 sq ft



First Floor

Floor Plan produced for Tavistock Bow by Mays Floorplans © . Tel 020 3397 4594
 Illustration for identification purposes only, not to scale
 All measurements are maximum, and include wardrobes and window bays where applicable




EPC



About Us

Tavistock Bow is an independent residential agency based in Covent Garden. We are niche, boutique, creative, knowledgeable, professional and approachable. We love what we do and that's why we do it.

Contact Us

- a. 21 New Row, Covent Garden, WC2N 4LE
 - t. 020 7477 2177
 - e. hello@tavistockbow.com
 - w. tavistockbow.com
-  /tavistockbow
 /tavistockbow
 @tavistockbow