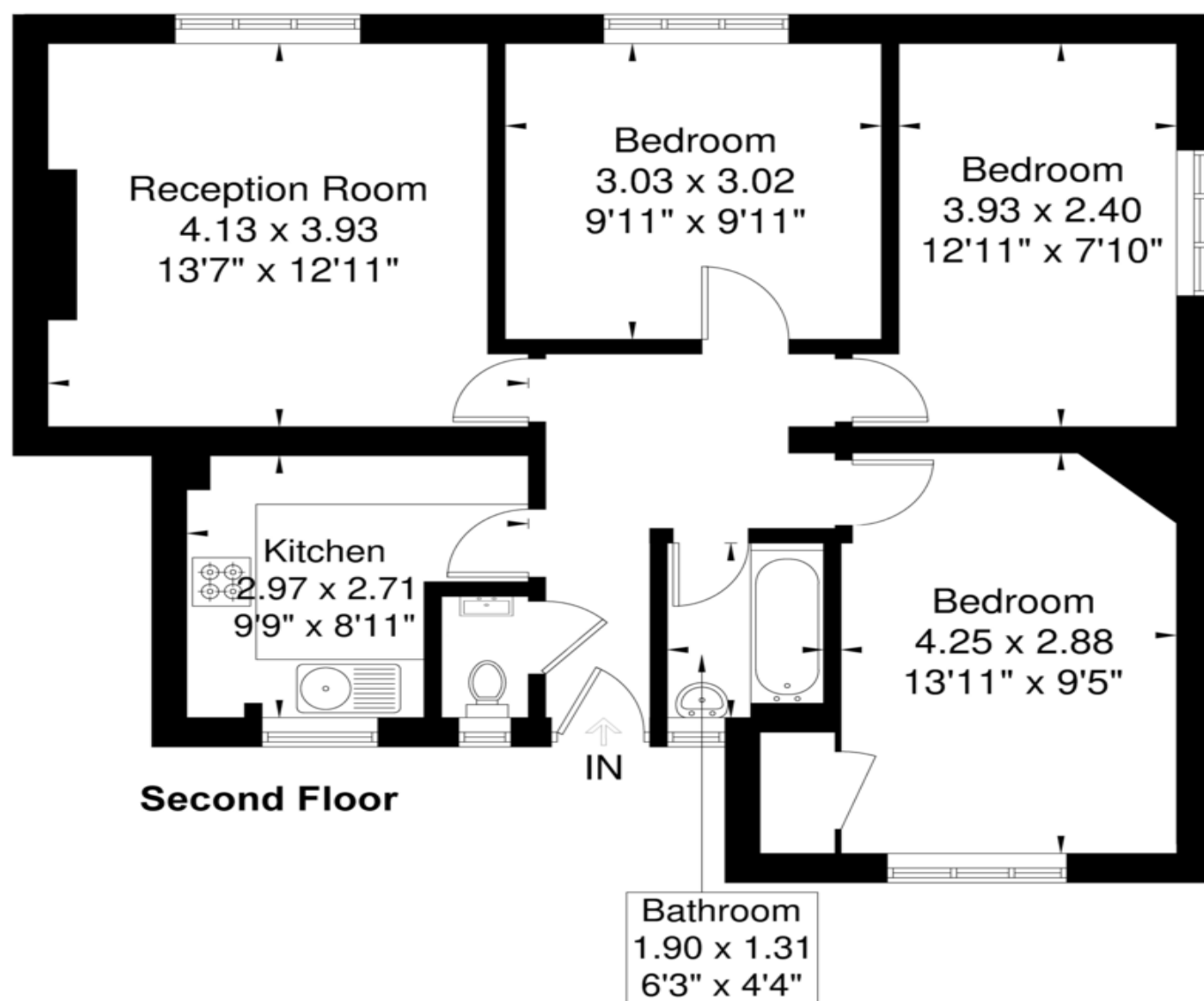


Hargraves House

Approximate Gross Internal Area = 69.2 sq m / 744 sq ft



Second Floor

Although every attempt has been made to ensure accuracy, all measurements are approximate.
 The floorplan is for illustrative purposes only and not to scale.
 © www.perspective.co.uk



White City Estate, London, W12 7NE

£385,000 Leasehold

Description

A spacious apartment located in the popular White City development situated on the 2nd floor. The accommodation comprises Three double bedrooms, reception room a separate fully fitted kitchen and family bathroom.

The property is an ideal buy to let investment or as a starter home for first time buyers who wish to mix spacious rooms with versatile accommodation. Hargraves House is located within a short walk from a wealth of shops, bars and restaurants in central Shepherd's Bush or the Westfield shopping centre at White City. Transport wise the location is extremely well served by the Central Line tube (White City), Hammersmith and City Line (Shepherd's Bush Market) and several excellent bus routes from the Uxbridge Road or Wood Lane into Central London. The A40 is only a moment from the property enabling easy reach out to the West of London and into Central London.

Key Features

- Three Bedrooms
- Separate Kitchen
- Light and Airy
- Second Floor
- Long Lease
- Close To Public Transport



Score	Energy rating	Current	Potential
92+	A		
81-91	B		81 B
69-80	C		
55-68	D	63 D	
39-54	E		
21-38	F		
1-20	G		