



Andrew Pearce

PINNER

NORMAN CRESCENT, PINNER, HA5 3QH

£800,000



Location: Norman Crescent is an ultra-exclusive residential location within the heart of the desirable Pinner Wood Park Estate. Pinner Village's historic High Street with its café culture, highly sought-after boutique shops and Metropolitan Line Station are within a short walk. Pinner Wood first and middle schools are also within a very short walk

Ground floor accommodation

Welcoming entrance hallway, guest cloak room, spacious lounge leading to dining room with engineered wood flooring and double glazed doors to the rear garden, fully fitted kitchen with a range of base and wall units, leading into a bright a spacious breakfast room with views onto the large side garden space

First floor accommodation

Galleried landing with a leaded light window to the front aspect, four spacious bedrooms, family bathroom and separate recently fitted modern shower room with separate WC.

Front Garden

Paved to provide ample off road parking, garage own drive and access to the sizable side plot, ideal for future extensions STP or secluded garden space.

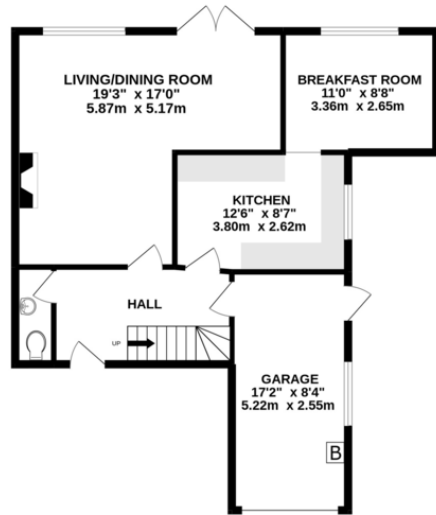
Rear garden

Rear garden with a patio area.

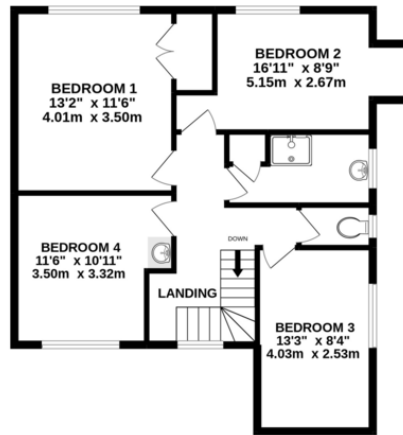


- Corner Plot with lots of potential
- 4 Double Bedrooms
- Ground Floor WC
- Side & Rear Gardens
- Double Glazed

GROUND FLOOR
710 sq.ft. (66.0 sq.m.) approx.



1ST FLOOR
682 sq.ft. (63.4 sq.m.) approx.



TOTAL FLOOR AREA : 1392 sq.ft. (129.4 sq.m.) approx.

Whilst every attempt has been made to ensure the accuracy of the floorplan contained here, measurements of doors, windows, rooms and any other items are approximate and no responsibility is taken for any error, omission or mis-statement. This plan is for illustrative purposes only and should be used as such by any prospective purchaser. The services, systems and appliances shown have not been tested and no guarantee as to their operability or efficiency can be given.
Made with Metropix ©2022



