

F R E E H O L D

Land with Planning Permission

# ADAIR CLOSE, SOUTH NORWOOD, LONDON, SE25 4HF

## £299,950



Proposed\_Front\_Elevation

### FEATURES

Development Opportunity

Planning permission has been granted

Permission for a 2 bedroom E.O.T House

Ideal for Developers & Investment Buyers

Ideal for Cash Buyers

Croydon 19/02683/FUL

CIL payment has been made



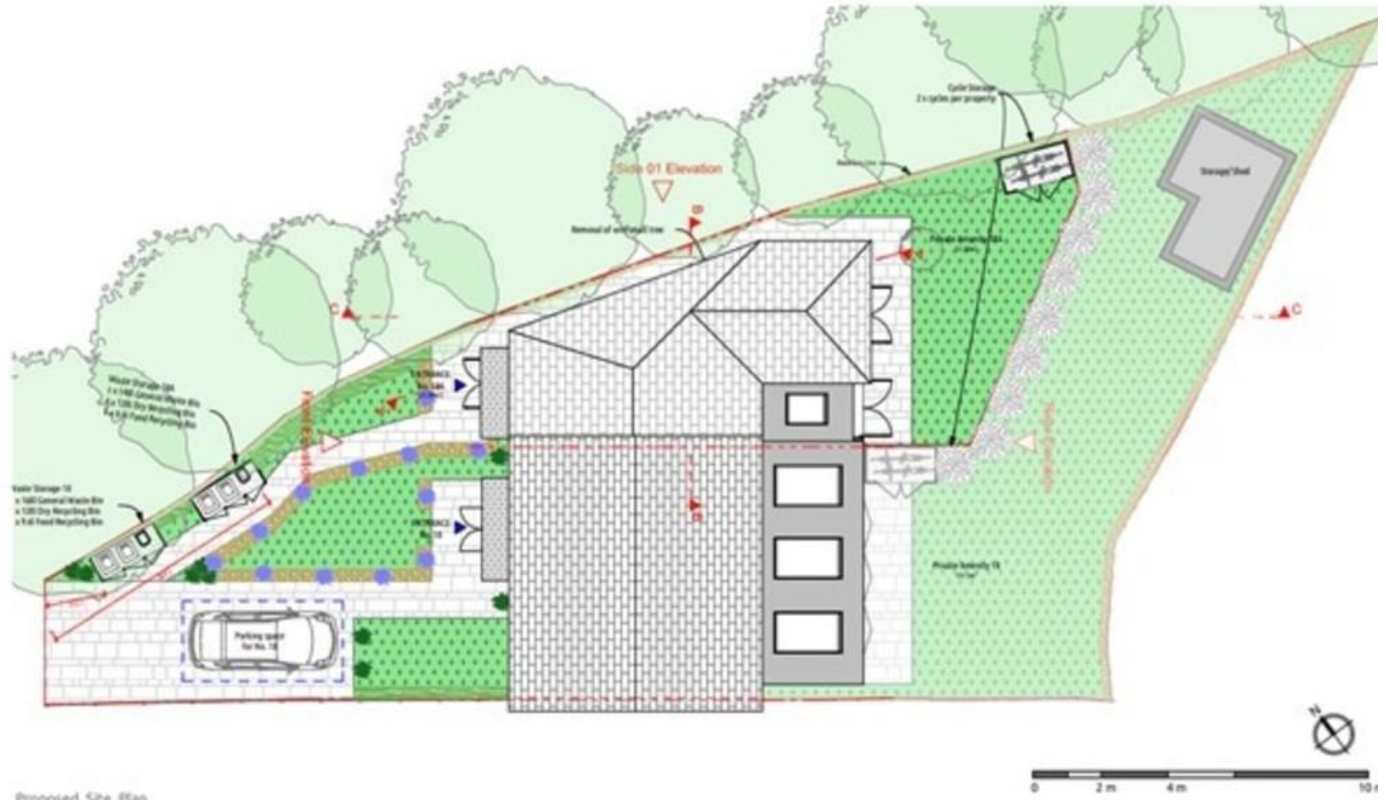
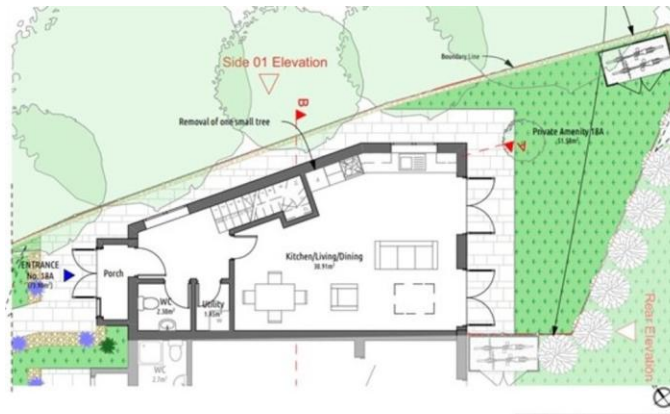
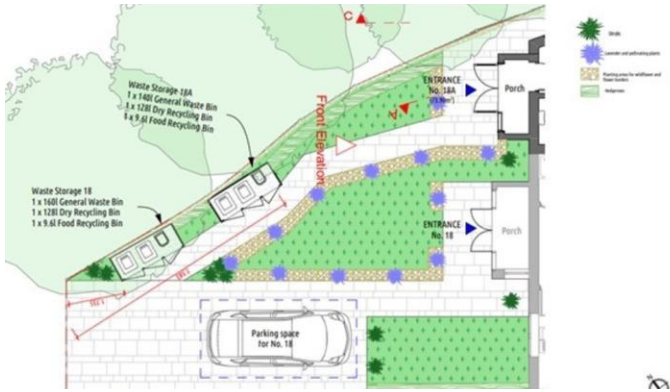
Proposed\_Rear\_Elevation

Proposed\_Side\_Elevation

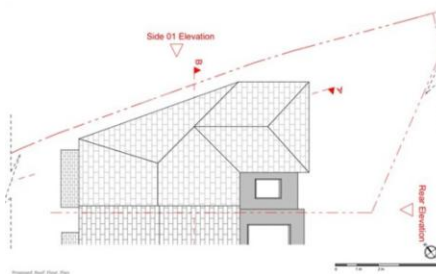


## **2 Bedroom Land with Planning Permission located in South Norwood**

New Build Land with planning granted for a 2 Bedroom House in a residential cul-de-sac. Situated within easy reach of all local amenities including Norwood Junction Overground Station, South Norwood High Street and The Country Park. The full planning documents can be seen on Croydon Councils website with a reference of 19/02683/FUL. CIL payment has been made. Don't miss out. View Now!



Proposed\_Site\_Plan



**Contact Us On:**

**020 8653 3444**

**[southnorwood@bensonpartners.co.uk](mailto:southnorwood@bensonpartners.co.uk)**

**[www.bensonpartners.co.uk](http://www.bensonpartners.co.uk)**

**Council Tax Band:**

%epcGraph\_c\_1\_360%

Agents Note: Whilst every care has been taken to prepare these particulars, they are for guidance purposes only. All measurements are approximate and are for general guidance purposes only and whilst every care has been taken to ensure their accuracy, they should not be relied upon and potential buyers are advised to recheck the measurements.