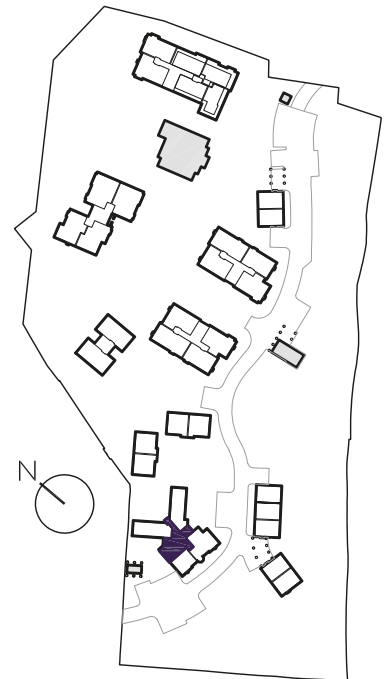
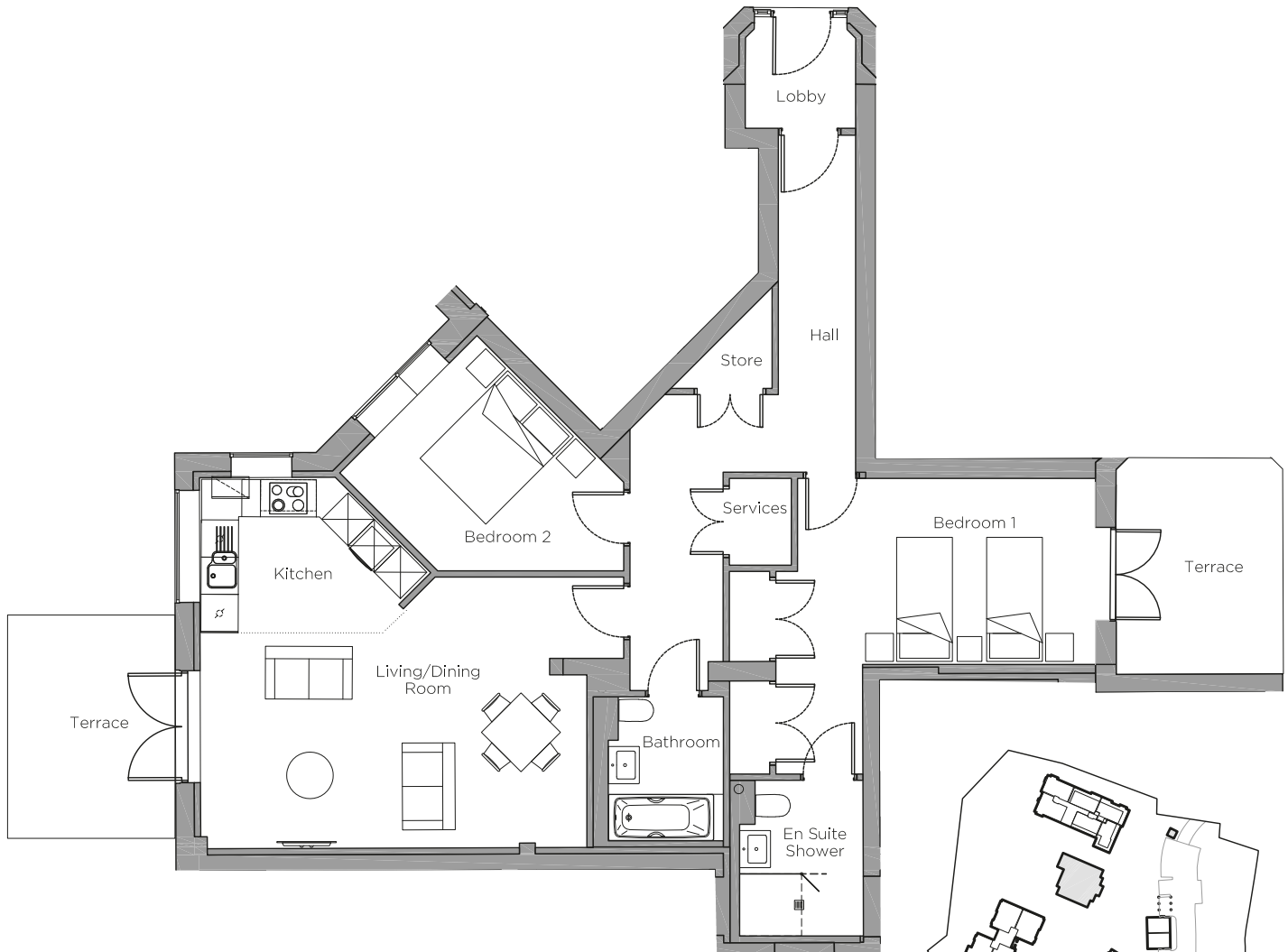


Audley Chalfont Dene

Ground Floor Apartment
4 Rydinghurst House, RH140



Internal Measurements	Metric (m)	Imperial (ft)
Kitchen/Living/Dining Room	6.22 x 4.38	20'5" x 14'4"
Bedroom 1	4.62 x 3.00	15'2" x 9'10"
Bedroom 2	3.13 x 2.23	10'3" x 7'4"
Terrace (approx)	3.60 x 2.70	11'10" x 8'10"
	3.30 x 2.70	10'9" x 8'10"

Audley Chalfont Dene
Rickmansworth Lane,
Chalfont St Peter, Buckinghamshire SL9 OLX
01494 876 173
www.audleyvillages.co.uk

Built-in wardrobes in bedrooms have not been included in the overall dimensions.
Maximum measurements shown. These pages are intended for marketing purposes only.
Designs vary according to plot and all details should be checked at the Sales Office.
August 2021



Audley Chalfont Dene

Ground Floor Apartment
4 Rydinghurst House, RH140



2 bedroom, ground floor apartment

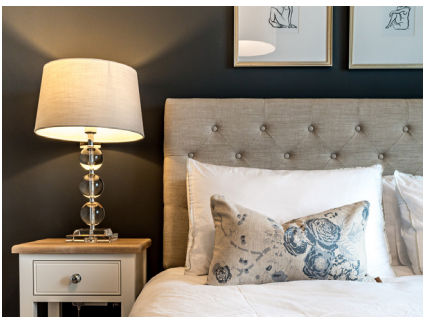
A unique two bedroom, ground floor apartment in the restored Rydinghurst House, accessed via its own front door directly from the landscaped grounds.

The master bedroom has double wardrobes, en suite shower room and access to a secluded east-facing terrace.

The apartment has a fully equipped open plan SieMatic kitchen/living room with Corian worktops and integrated appliances, with French doors opening to an west-facing terrace.

Property specifications:

- Unique property in the restored Rydinghurst House
- Open plan living room/kitchen with doors leading to a terrace
- Additional terrace from the master bedroom
- Luxury Villeroy & Boch en suite shower room
- Double wardrobes in the master bedroom
- Guest bathroom



Images are for illustration purposes only

