

tavistockbow

For Rent



People Make Places



Great Marlborough Street, Carnaby W1

2 bedrooms | 775 sq ft

£825 pw

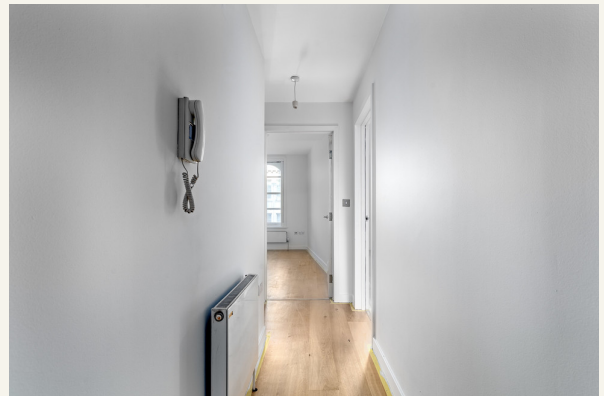




A spacious two double bedroom, two-bathroom (one ensuite) apartments moments from Carnaby Street which has views onto the iconic Liberty department store & The London Palladium theatre. The flat is situated on the 2nd floor (with lift).

What you need to know

- Two double bedrooms
- Two bathrooms
- Second floor
- Lift
- Wooden flooring throughout
- Unfurnished
- Gas hob
- Available immediately
- Opposite Liberty London
- Close to Oxford Circus underground station



Great Marlborough Street, Carnaby W1



Overview

The flat features two good size double bedrooms, one with an ensuite shower room and a further guest bathroom for the 2nd bedroom. The kitchen is open plan to the reception room.

Available immediately on an unfurnished basis. The landlord offers a 3 year contract with a 6 months mutual break clause, subject to contract. Westminster Council tax band G.

WHAT WE LOVE:

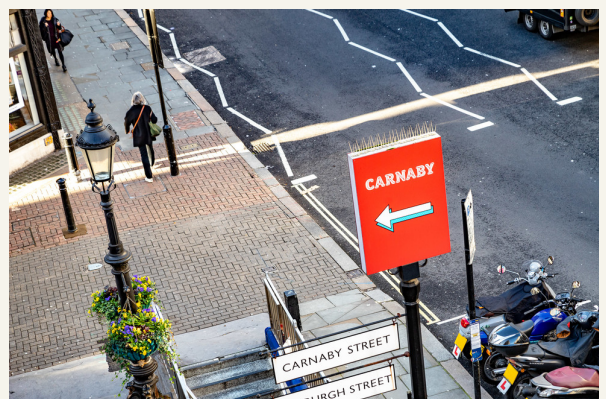
- Views onto Liberty
- Moments from Oxford Circus & Regent Street
- 24 hour security centre (not porter) nearby
- Close to Courthouse Hotel with an incredible cinema
- Close to Kingly Court food court

WHAT YOU NEED TO KNOW:

- Wooden flooring throughout
- Gas hob
- Secondary glazing
- Lift
- Westminster Council tax



Great Marlborough Street, Carnaby W1



Great Marlborough Street, Carnaby W1

People Make Places

London is collection of inspiring urban villages and one of the most exciting places in the world to live, work & play.

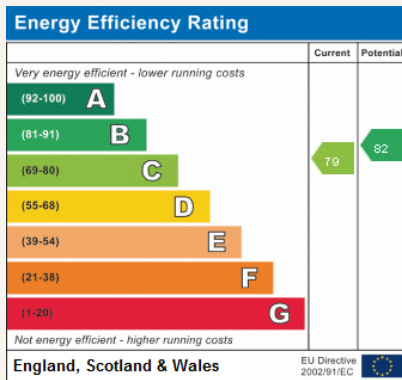
We work with both property owners and their occupiers, sharing the story of these vibrant neighbourhoods, conveying the unique soul & energy to future custodians, the people who'll keep them buzzing.

And unlike many real estate businesses we're not just about buildings, because streets & buildings don't make a neighbourhood.

We're about building relationships, because **people make places**.

MISINTERPRETATION ACT [COPYRIGHT] DISCLAIMER: Tavistock Bow Ltd for themselves and for the vendor(s) of this property whose agents they are, given notice that: 1. These particulars do not constitute, not constitute any part of, an offer or contract. 2. None of the statements contained in these particulars as to the property are to be relied on as statements or representations of fact. 3. Any intending purchaser or lessee must satisfy themselves by inspection or otherwise as to the correctness of each of the statements contained in these particulars. 4. The vendor(s) or lessor(s) do not make or give and neither Tavistock Bow Ltd nor any person in their employment has any authority to make or give any representation or warranty whatever in relation to this property. Finance Act 1989, Unless otherwise stated all prices and rents are quote exclusive of VAT. Property Misrepresentation Act 1991; These details are believed to be correct at the time of compilation but may be subject to subsequent amendment.

Follow us:     @tavistockbow

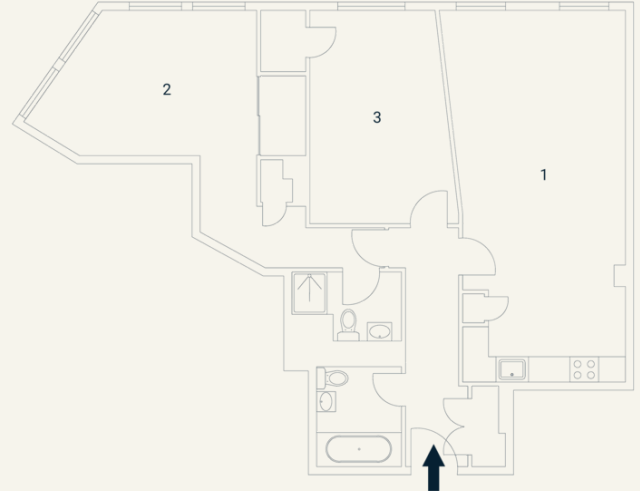


Great Marlborough Street, W1

Approximate Gross Internal Area 72 sq m / 775 sq ft

Third Floor

1 Living / Kitchen / Dining 3.71 x 7.40M 12'1" x 24'2"	2 Bedroom 5.21 x 3.13M 17'0" x 10'2"	3 Bedroom 2.46 x 4.36M 8'0" x 14'3"
--	--	---



Floorplan produced for Tavistock Bow. Illustration for identification purposes only and not to scale. All measurements are approximate and not to be relied upon.

tavistockbow

21 New Row, Covent Garden,
London, WC2N 4LE

t: 020 7477 2177
e: hello@tavistockbow.com
w: tavistockbow.com



Great Marlborough Street, Carnaby W1