

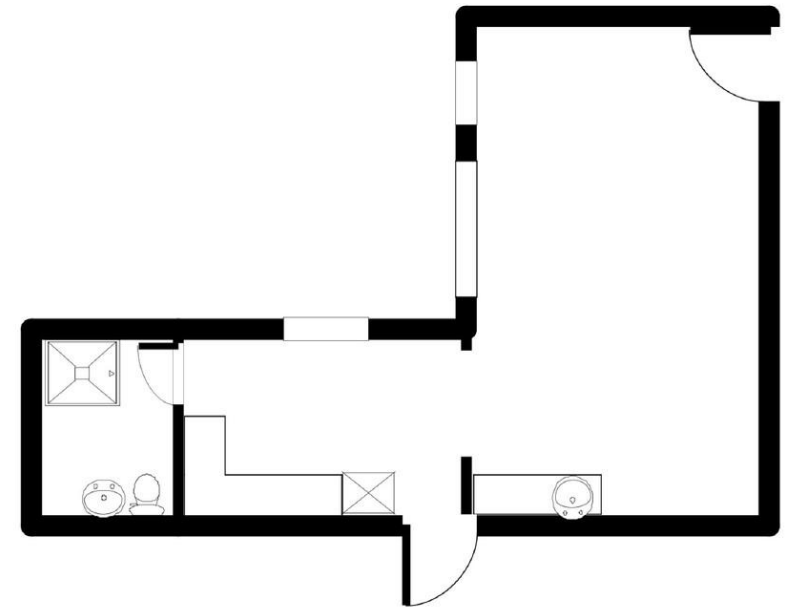


- Newly Decorated
- Double Bedroom
- Superb for Transport
- 

Lewisham High Street, London, SE13 6JZ

£950 pcm

The property has been decorated. A large, studio flat, with a separate kitchen. Centrally located in Lewisham High Street, but also around the corner from Ladywell. Superb transport being near two great stations and the DLR. Located at the back of the building and away from the busy road. Living Room 21'3 x 15'8, kitchen, double bedroom and plain bathroom. 228 sq ft. New windows due to be fitted. Available Mid May.



Fire Escape



Energy Efficiency Rating		
	Current	Potential
Very energy efficient - lower running costs		
(92-100) <b>A</b>		
(81-91) <b>B</b>		
(69-80) <b>C</b>		
(55-68) <b>D</b>		
(39-54) <b>E</b>	44	62
(21-38) <b>F</b>		
(1-20) <b>G</b>		
Not energy efficient - higher running costs		
<b>England &amp; Wales</b>	EU Directive 2002/91/EC	

South London Branch, 197  
Lewisham High Street, London,  
SE13 6AA

[www.markbeaumont.com](http://www.markbeaumont.com)  
[lettings@markbeaumont.com](mailto:lettings@markbeaumont.com)  
020 8852 5000

Agents Note: Whilst every care has been taken to prepare these particulars, they are for guidance purposes only. All measurements are approximate and for general guidance purposes only and whilst every care has been taken to ensure their accuracy, they should not be relied upon and we advise to recheck the measurements. All inclusive tenancy start-up fee £399. Includes: VAT, References, Administration Charge, Tenancy Agreement. (up to 2 tenants). Additional Tenants charged at £150 inclusive, per additional tenant. Guarantor fees: £150 per guarantor. (Where necessary). Check out fee from £80 - £120 depending on the size of the property. Ask for a scale of charges in branch. Holding Deposit: £200