



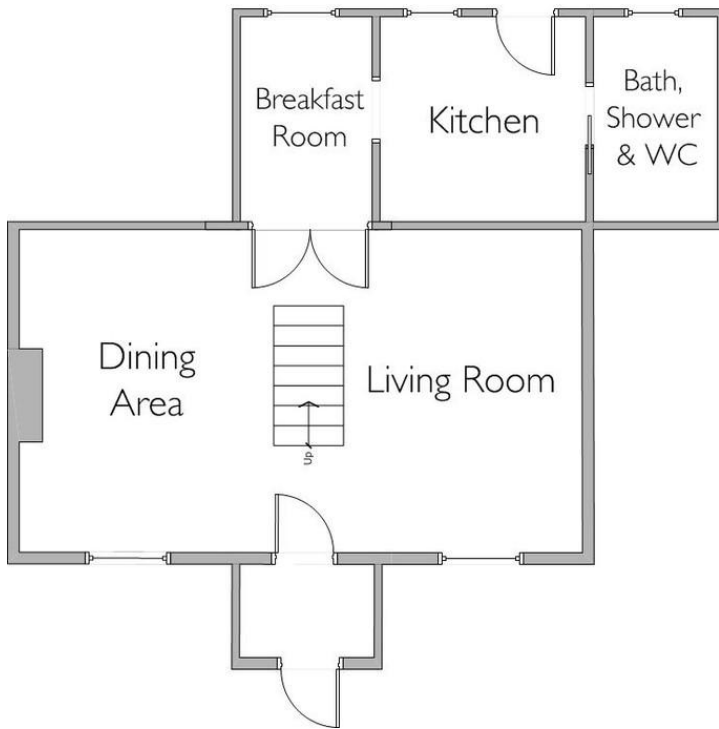
- Rural Setting
- Short Drive To Epping Central
- Off Street Parking
- Two Good Size Bedrooms
- Characterful Property
- Good Size Garden

Situated a short drive from Epping's amenities, this two bedroom terraced house in Epping Green offers a peaceful yet accessible home. With characterful features and generous living space, the property also comes with off street parking and good sized garden.

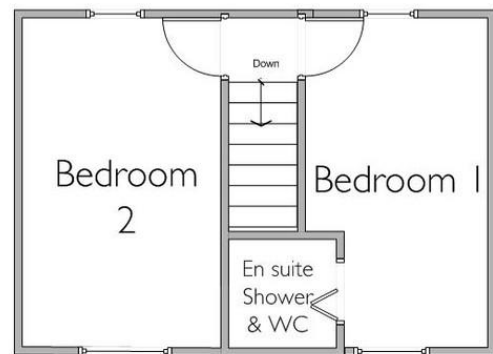
Stevenette

Epping Green, CM16 6PX
£1,500 pcm

GROUND FLOOR



FIRST FLOOR



Stevenette

%epcGraph_c_l_230%

5a Simon Campion Court, 232-234 High Street, Epping, Essex, CM16 4AU
Tel: 01992 563090
Email: lettings@stevenette.com



@StevenetteandCoLLP



@StevenetteandCo



Whilst every care has been taken in the preparation of these sales particulars, they are for guidance purposes only and no guarantee can be given as to the working condition of the various services and appliances. Measurements have been taken as accurately as possible but slight discrepancies may inadvertently occur. The agents have not tested appliances or central heating services. Interested applicants are advised to make their own enquiries and investigation before finalising their offer purchase.