



SPENCER & SENER
Integrity ♦ Honesty ♦ Trust



Asking Price Of £280,000

**83 Clarence Close
Barnet
EN4 8AN**

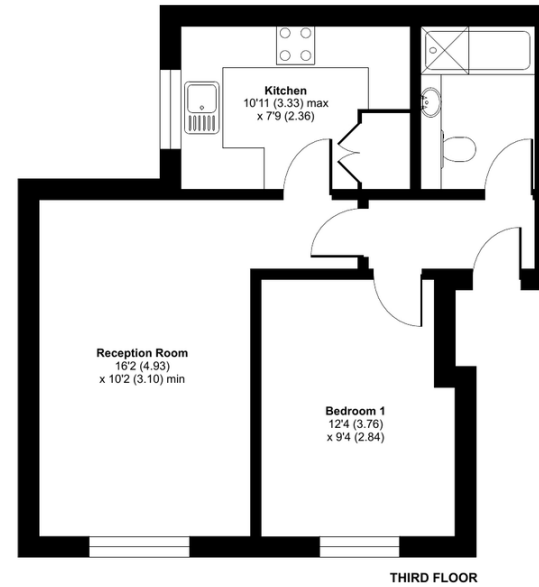
EPC Rating '71'

Council Tax Band

- One Bedroom
 - Second Floor
 - Purpose Built Flat
 - Fitted Kitchen
 - Reception Room
 - Current EPC Rating C
 - Communal Parking
 - 118 Years Lease
-

Clarence Close, Barnet, EN4

Approximate Area = 472 sq ft / 43.8 sq m
For identification only - Not to scale



Floor plan produced in accordance with RICS Property Measurement Standards incorporating International Property Measurement Standards (IPMS2 Residential). ©richecom 2022.
Produced for Spencer & Sener. REF: 038656

Agents Note: Whilst every care has been taken to prepare these particulars, they are for guidance purposes only. All measurements are approximate and for general guidance purposes only and whilst every care has been taken to ensure their accuracy, they should not be relied upon and potential buyers/tenants are advised to recheck the measurements