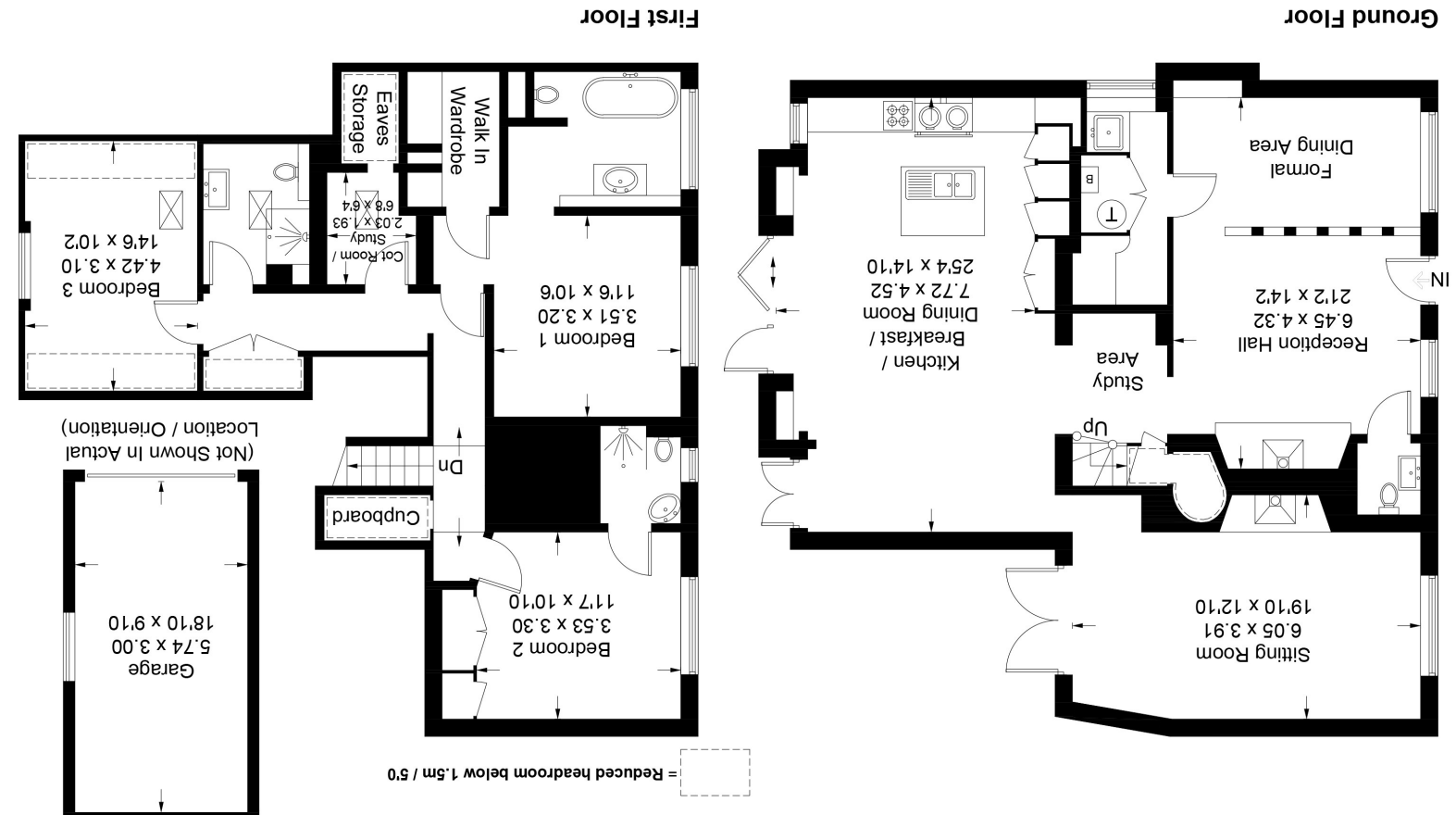


Whilst every attempt has been made to ensure the accuracy of the floor plan contained here, measurements of doors, windows, rooms and any other items are approximate and no responsibility is taken for any error, omission, or misstatement. This plan is for illustrative purposes only and should be used as such by any prospective purchaser. Created by Emzo Marketing 2022. (ID851418)



**1, The Square, PO10 8HT**  
 Approximate Gross Internal Area = 185.9 sq m / 2001 sq ft  
 Garage = 17.2 sq m / 185 sq ft  
 Total = 203.1 sq m / 2186 sq ft  
 Produced for Stride & Son Estate Agent.



# STRIDE & SON

Southdown House, St. John's Street, Chichester, PO19 1XQ  
 Tel: 01243 782626 Fax: 01243 786713  
[www.strideandson.co.uk](http://www.strideandson.co.uk) [properties@strideandson.co.uk](mailto:properties@strideandson.co.uk)



The Square, Prinsted





**1 The Square, Prinsted, PO10 8HT.**

