



5 Highfield Stables Cottages, London Road, Tetbury, Gloucestershire, GL8 8FZ

Price Guide: £630,000

A brand new impressive mews style home with a large west-facing garden backing onto countryside. Part of an exclusive new development of only five, high quality, new homes by Highfield Construction, located down a long private drive and situated on the rural outskirts of the Cotswold Market town of Tetbury. Nearing completion and VIEW HOME available by appointment.

01666 840 886 jamespyle.co.uk interested@jamespyle.co.uk

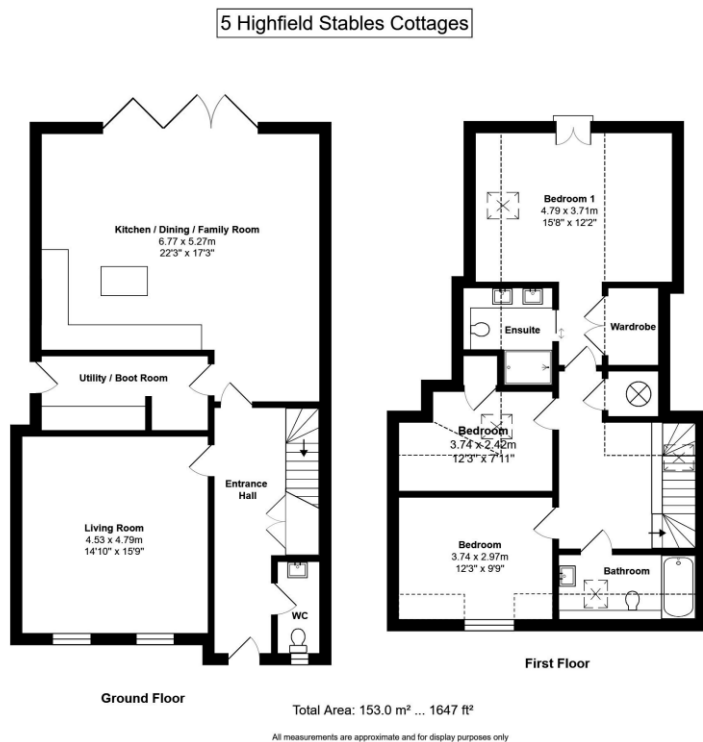
4 The Old School, High Street, Sherston SN16 0LH
James Pyle Ltd trading as James Pyle & Co. Registered in England & Wales No: 08184953
VAT Reg No: 142054549



The Property

5 Highfield Stables Cottages is a brand new mews style home forming part of an exclusive development of just five impressive new properties. Located on the rural edge of Tetbury, yet within walking distance to amenities, the property occupies a superb position backing onto fields providing a lovely westerly outlook.

Built in reconstructed Cotswold stone beneath a Roman tiled roof and finished with Cotswold green UPVC windows. The accommodation is finished to a very high specification boasting sustainable air sourced heating, underfloor heating throughout the ground floor and underfloor heating in the bathrooms and en-suites. The ground floor layout includes a large front living room and an impressive, highly desirable open plan kitchen/family room at the rear with bi-fold doors spilling into the garden. The kitchen is well equipped with integrated appliances and a breakfast bar. There is a separate useful utility/boot room which has side access. Upstairs, there are three bedrooms and a family bathroom. The principal bedroom is an excellent feature, benefitting from both an en-suite shower room and generous fitted wardrobe the bedroom also has been thoughtfully designed with a Juliet balcony which overlooks the garden to the fields beyond taking full advantage of spectacular sunsets in particular. The internal specification is of an excellent quality with carpeted and tiled floor finishes. The large west-facing garden will be landscaped mostly to lawn with an Indian sandstone sun terrace. There are two private parking spaces in front of the property in addition to further visitors parking.



Situation

This exclusive new development is located on the rural outskirts of Tetbury with views over land owned by the Duchy of Cornwall. The development is located down a long private drive accessed off the London/Cirencester road.

Tetbury is a thriving historic Cotswold market town with much of it dating back to the 17th and 18th Centuries. The town has a broad range of shops and amenities for everyday needs as well as a number of quality antique shops, excellent hotels, restaurants and cafes within the town centre. Further everyday needs include a large supermarket, hospital, surgeries and post office whilst there are also excellent schools catering for all ages. Waitrose at Malmesbury and Cirencester.

Voted by Country Life magazine recently as the third most desirable town in the country, Tetbury is situated within an Area of Outstanding Natural Beauty and is surrounded by delightful Cotswold Countryside where there are ample opportunities for walking, shooting and hunting.

Conveniently located less than half an hour from both the M4 and M5 motorway, Tetbury is within easy reach of Cirencester, Cheltenham, Bath, Bristol and Swindon. Close by is the beautiful Forest Commission run Westonbirt Arboretum and Prince Charles Highgrove Estate. There is good access to nearby Kemble Railway Station which provides regular fast services to London and other regional centres.

Directions

From the centre of Tetbury, proceed towards Cirencester on the A433 London Road. Continue passed Tesco and proceed over two mini roundabouts, passing the Audi Garage on the right, and after the second roundabout, proceed for 100 yards and take the next driveway on the left. The development is found beyond the farmhouse at the end of the drive.

Local Authority

Cotswold District Council

Council Tax & EPC TBC