

THE PENNINE

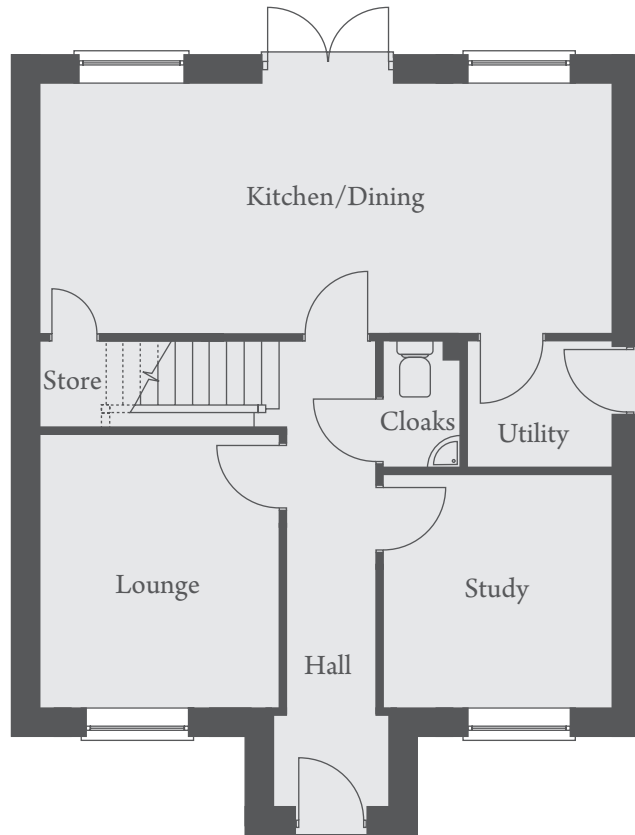
FOUR BEDROOM HOME



Images, photographs and CGI's are representative only and are not plot specific. External finishes, landscaping and configuration may vary from plot to plot, Wiggett Homes reserves the right to amend and update the specification without prior notification. Please refer to your Sales Consultant for plot specific details.

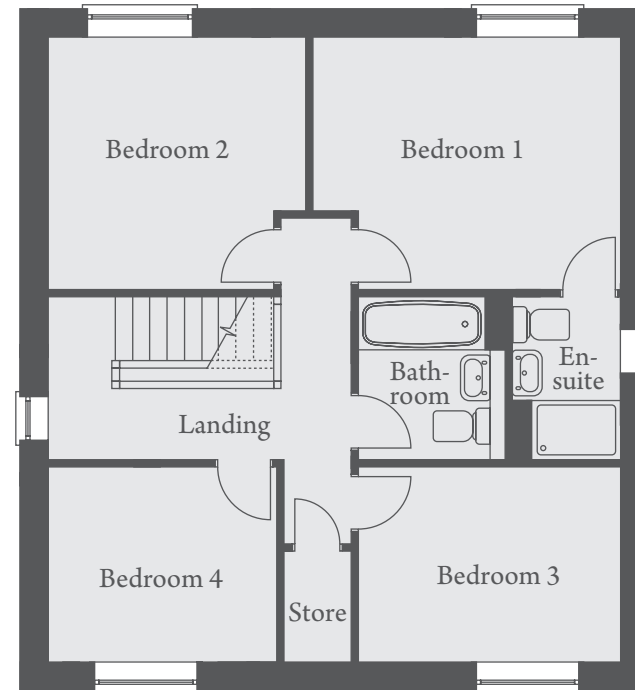
THE PENNINE

FOUR BEDROOM HOME



GROUND FLOOR

Kitchen/Dining	7835 x 3405mm	25'8" x 11'2"
Lounge	3310 x 3752mm	10'10" x 12'4"
Study	3170 x 3201mm	10'5" x 10'6"



FIRST FLOOR

Bedroom 1	4248 x 3429mm	13'11" x 11'3"
Bedroom 2	3524 x 3429mm	11'7" x 11'3"
Bedroom 3	3618 x 2689mm	11'10" x 8'10"
Bedroom 4	3137 x 2689mm	10'4" x 8'10"

Landscaping and configuration may vary from plot to plot. Please refer to Sales Consultant for further details. All dimensions are approximate and should not be used for carpet sizes, appliance spaces, or furniture. We operate a policy of continuous improvement and individual features such as kitchen and bathroom layouts, doors, windows, garages and elevational treatments may vary from time to time. Consequently these particulars should be treated as general guidance only and do not constitute a contract, part of a contract or a warranty.