

**£900 pcm**

Stonea Farm Cottage, Sixteen Foot Bank, Stonea,  
March, Cambridgeshire PE15 0DU

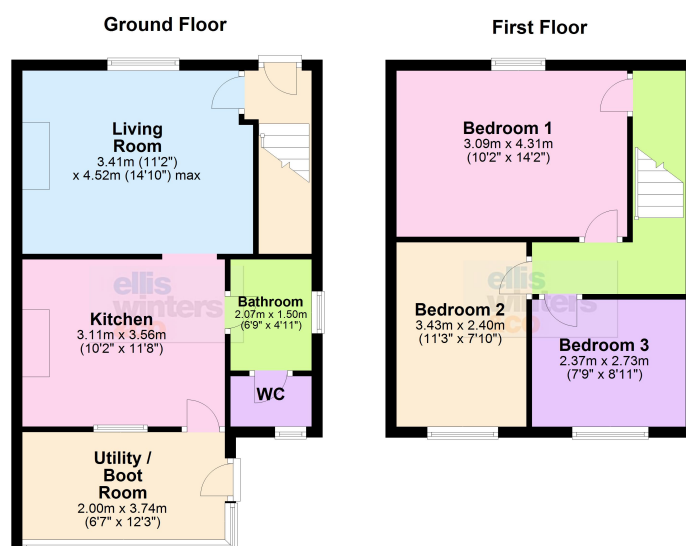


To arrange a viewing call us now on 01354 694900

Deposit £1,038

Available beginning of February, this three bedroom semi detached cottage has living room with field views, kitchen, boot room/utility and ground floor cloakroom.

There are three good size bedrooms upstairs, off road parking and a fully enclosed garden to the rear.



**£900 pcm**

Stonea Farm Cottage, Sixteen Foot Bank, Stonea, March,  
Cambridgeshire PE15 0DU



#### GROUND FLOOR

##### UTILITY / BOOT ROOM

3.74m (12'3") x 2.00m (6'7")

Windows to both front and side, entrance door leading in.

##### KITCHEN

3.56m (11'8") x 3.11m (10'2")

Fitted with a matching range of wall and base units with freestanding electric cooker, floor standing oil boiler, integrated fridge and freezer, shelving.

##### LIVING ROOM

4.52m (14'10") max. x 3.41m (11'2")

Window to rear, feature fireplace.

##### BATHROOM

2.07m (6'9") x 1.50m (4'11")

Fitted with a panelled bath with electric shower over and hand wash basin. Window to side.

##### WC

Separate WC. Window to front.

#### FIRST FLOOR

##### BEDROOM 1

4.31m (14'2") x 3.09m (10'2")

Window to rear, over stairs cupboard, airing cupboard.

##### BEDROOM 2

3.43m (11'3") x 2.40m (7'10")

Window to front.

##### BEDROOM 3

2.73m (8'11") x 2.37m (7'9")

Window to front, shelving.

#### OUTSIDE

There is parking opposite the property and a picket style fence encloses the front garden. To the rear the garden is laid mainly to lawn.

#### VIEWING

By arrangement with elliswinters&co

Fenland District Council Tax band - B

Energy rating - E

#### INITIAL LENGTH OF TENANCY

6 months



Ellis Winters & Co 20 Market Hill, Chatteris, Cambridgeshire, PE16 6BA  
Tel: 01354 694900 Email: [info@elliswinters.co.uk](mailto:info@elliswinters.co.uk) [www.elliswinters.co.uk](http://www.elliswinters.co.uk)