



Lambourne Gardens, Barking

Offers In Region Of
£450,000

- TWO/THREE BEDROOMS
- ONE BEDROOM DOWNSTAIRS
- EXTENDED KITCHEN/DINER
- DOWNSTAIRS SHOWER/WC





STUNNING HOUSE...THREE BEDROOMS PLUS THREE BATHROOMS. Very short walk to Upney Station. This family house, was originally built as a two bedroom, however the original front lounge is now used as a bedroom. The house has been EXTENDED to both the front and rear and now provides a fabulous OPEN PLAN KITCHEN/DINER/LOUNGE area. The house has TWO SHOWER ROOMS plus a FAMILY BATHROOM. Delightful front and back gardens.

ENTRANCE HALL

Victorian style tiled floor. cupboard, housing meters and storage, radiator.

BEDROOM

15' 5" x 11' 2" (4.7m x 3.4m) This room is currently used as a bedroom, originally a lounge. Window to front, radiator.

KITCHEN/DINER/LOUNGE

21' 0" x 15' 3" (6.4m x 4.65m) FULLY EXTENDED. New fitted kitchen area with middle island with ceiling extractor fan. Dining, lounge area with skylight and large patio doors to garden, two radiators, timber flooring.

SHOWER ROOM (GROUND FLOOR)

With Three piece suite, tiled walls and floor.

LANDING

Access to loft.

BEDROOM ONE

12' 3" x 10' 6" (3.73m x 3.2m) Window to front, radiator, access to..

ENSUITE SHOWER ROOM

Three piece suite, tiled walls, towel rail.

BEDROOM TWO

10' 0" x 9' 3" (3.05m x 2.82m) Window to rear, sink unit with cupboards, radiator.

FAMILY BATHROOM

Full three piece suite, panel bath, with shower attachment, vanity basin, concealed WC, window to rear, heated towel rail. tiled.

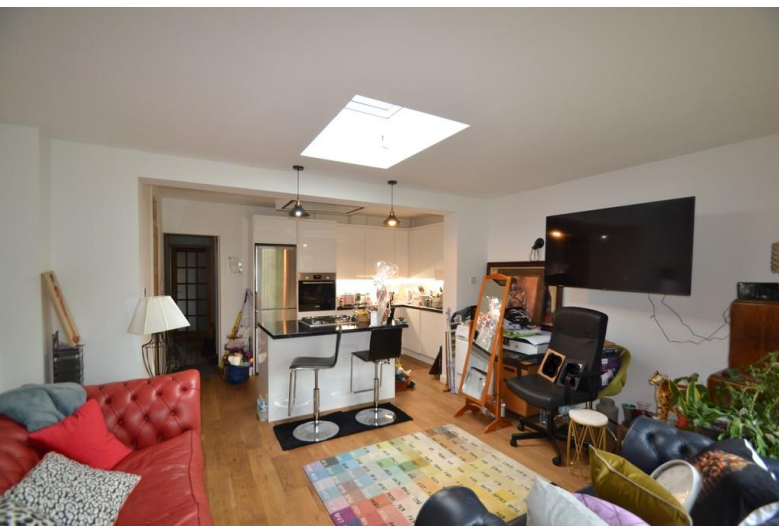
EXTERIOR

Attractive cottage style front garden, with quality fencing/gate. The back garden is approx. 60' being very mature with ample planting/trees and pergola, large timber shed/outbuilding very secluded and unoverlooked.

Agents Note.

We routinely refer potential purchasers to Move with Us Ltd. It is your decision whether you choose to deal with Move with Us Ltd. In making that decision, you should know that we receive an annual payment benefits from Move with Us Ltd, equating to

approximately £314.48 per referral.





%epcGraph_c_1_245%

COUNCIL TAX BAND

Tax band C

TENURE

Freehold

LOCAL AUTHORITY

Barking and Dagenham London
Borough Council

OFFICE

Steps Estate Agents
298 Heathway
Dagenham
Essex
RM10 8LU

T: 020 8593 5933

E: dagenham@steps.me.uk

W: www.stepsestateagents.co.uk

Agents Note: Whilst every care has been taken to prepare these sales particulars, they are for guidance purposes only. All measurements are approximate are for general guidance purposes only and whilst every care has been taken to ensure their accuracy, they should not be relied upon and potential buyers are advised to recheck the measurements